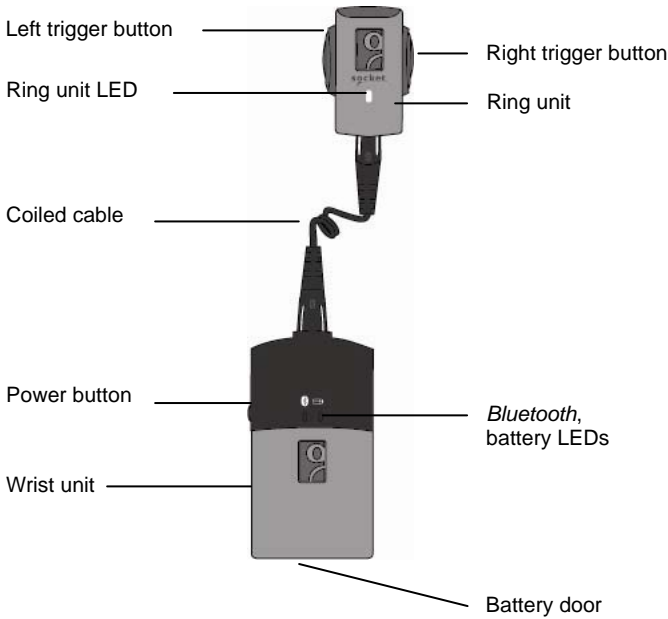


# Quick Start Guide

## Bluetooth® Cordless Ring Scanner Series 9



	<b>AC adapter:</b> Insert the plug for your region. While pressing the release button, push the plug down and turn clockwise.
	<b>Battery charger:</b> The battery must be charged before initial use. You can charge the battery before or after inserting it into the wrist unit. You can charge a wrist unit and spare battery simultaneously.  <i>Note: Order the charger separately.</i>
	<b>Battery door:</b> To unlock, use a screwdriver or coin to turn the lock counter-clockwise to the position shown.
	<b>Battery insertion:</b> Insert the battery with the blank side on top and metal contacts in front.
	<b>Finger strap:</b> Insert clip into slot and gently push down. Repeat on other side.
	<b>Putting on the Bluetooth CRS:</b> Assemble and put on the Bluetooth CRS as shown. When connecting the cable, connect the narrow end to the ring unit.

**Product Registration:** Register online to access technical support, get upgrades or sign up for special offers: <http://support.socketmobile.com/>

**Accessories:** Purchase online at: <http://www1.socketmobile.com/products/bluetooth-scanners/accessories-bt.aspx>

© 2010 Socket Mobile, Inc. All rights reserved. Socket, the Socket logo, SocketScan, ConnectAgent, ActivePairing, Bluetooth Cordless Ring Scanner, and Business Mobility Now! are registered trademarks or trademarks of Socket Mobile, Inc. The Bluetooth wordmark is a registered trademark of the Bluetooth SIG, Inc. USA, and any use by Socket Mobile, Inc. is under license. All other trademarks and trade names contained herein may be those of their respective owners.

### Package Contents

- Bluetooth Cordless Ring Scanner: Ring unit, wrist unit, coiled cable
- 2 Finger straps
- Wrist strap
- Lithium-ion battery
- Quick Start Guide
- CD with software and documentation

**Battery Charger (Order Separately, SKU# AC4048-1143)**  
Includes battery charger and AC adapter with plugs for USA, Europe, and Australia

### SocketScan Task Tray Icon

For Windows Mobile/CE, the icon appears in the Today screen.

Icon	Meaning
	Windows Mobile/CE: SocketScan is not ready to connect to the scanner. Windows 7/Vista/XP: Scanner is not connected to the PC.
	Windows Mobile/CE only: SocketScan is ready to connect to scanner.
	Scanner is connected.
	Windows 7/Vista/XP only. SocketScan is ready for the scanner to connect via ActivePairing.

### Turning on the Bluetooth CRS

Press and hold the power button until you hear 2 beeps (low-high).

Time after turning on	Bluetooth mode
0-5 minutes	Discoverable and connectable
5-20 minutes	Connectable
20 minutes	Scanner automatically turns off

**Disconnecting:** Click on the SocketScan task tray icon at the bottom of the screen. In the pop-up menu, click **Disconnect**.

**Turning Off the CRS:** Press and hold the power button on the wrist unit until you hear 2 beeps (high-low)

### Ring Unit LED

LED	LED Behavior	Meaning
Good Read (Green)	On	Data successfully scanned and sent to computer

### Wrist Unit LEDs

LED	LED Behavior	Meaning
Bluetooth Status (Blue)	On	Power button pressed
	1 blink per second	Bluetooth radio on, no connection
	1 blink per 3 seconds	Bluetooth connection
Battery Status (Red)	Blinking	20% battery capacity left
	On	10% battery capacity left
	Off	Off or Good Battery

### Ring Unit Beeps

Beep Patterns	Meaning
2 beeps (low-high)	Power on
2 beeps (high-low)	Power off
1 beep	Scanner connected to computer
2 beeps (same tone)	Scanner disconnected from computer
1 beep with green LED (optional setting)	Data successfully scanned and sent to computer
3 long beeps	Cable disconnected from wrist unit
5 beeps	Scanner detected an error and reset

### Technical Support

- **Online Knowledge Base:** Articles and Frequently Asked Questions. <http://support.socketmobile.com/faq>
- **Online Requests:** Register your product and submit a question. <http://support.socketmobile.com/>
- **By Phone (Tier 1 technical support):**  
Direct: +1-510-933-3020  
USA & Canada Toll-free: 800-279-1390

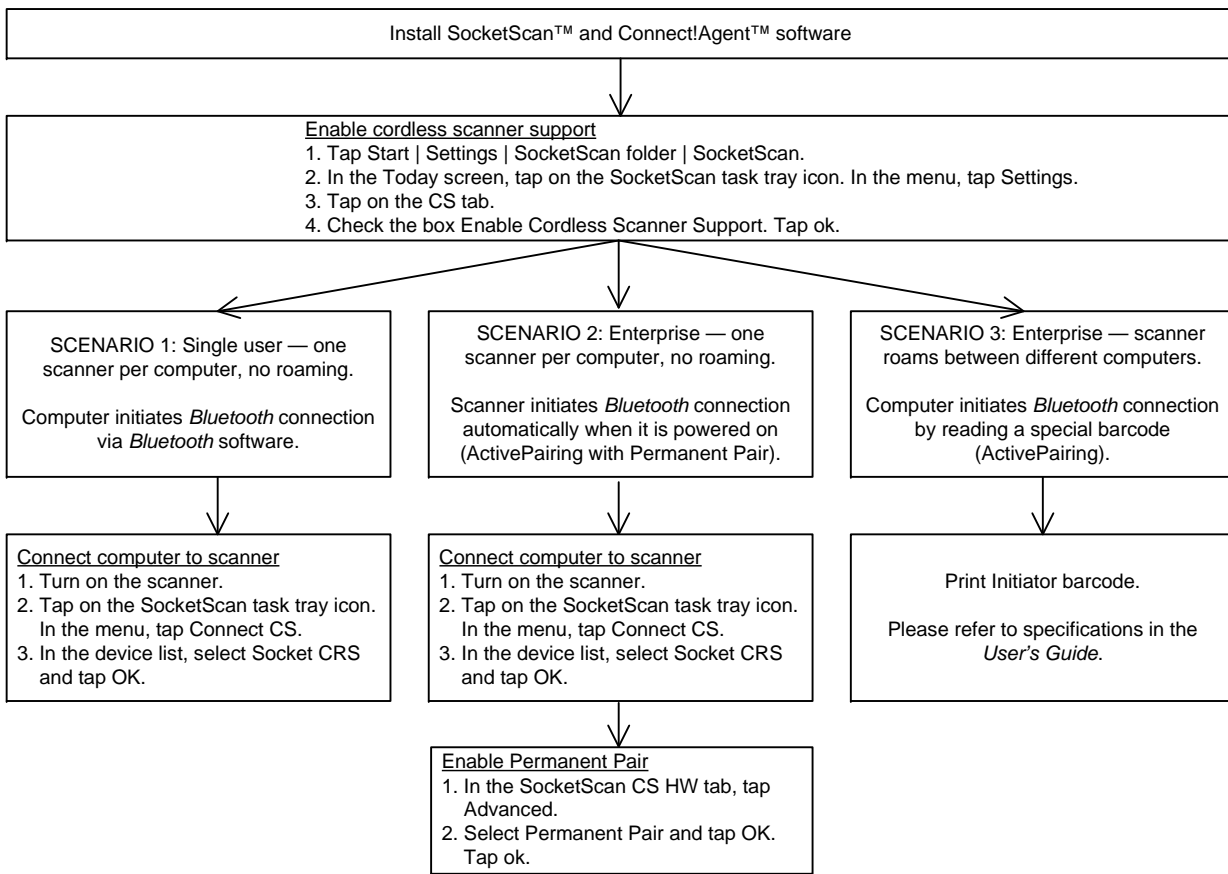


6430-00306E  
Printed in USA

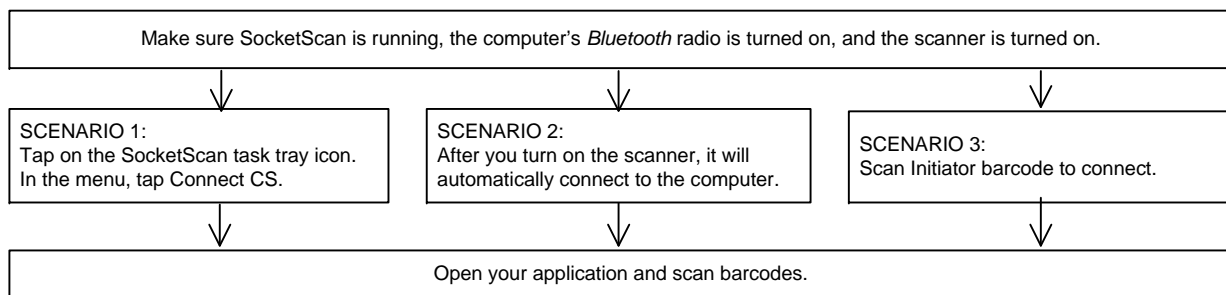
The Socket *Bluetooth* Cordless Ring Scanner (CRS) offers three different connection options to fit different work environments. The following diagrams provide basic instructions for installing, configuring, and using the *Bluetooth* Cordless Ring Scanner with different connection methods. For complete instructions, please refer to the *User's Guide*, available on the CD.

Download the latest software and manuals from: <http://www.socketmobile.com/support/downloads/>

## INSTALLATION AND CONFIGURATION INSTRUCTIONS FOR WINDOWS MOBILE / CE

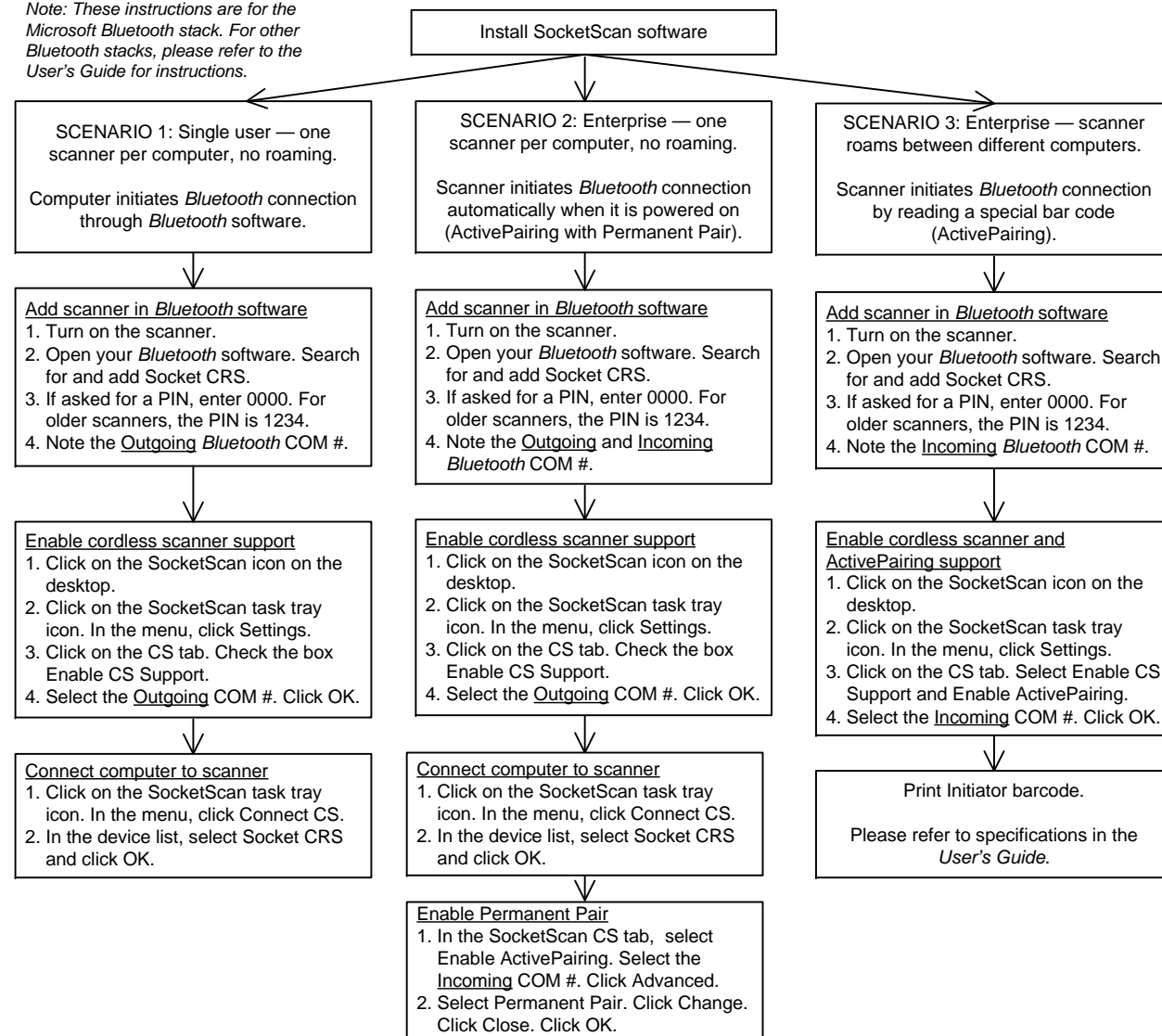


### OPERATION INSTRUCTIONS

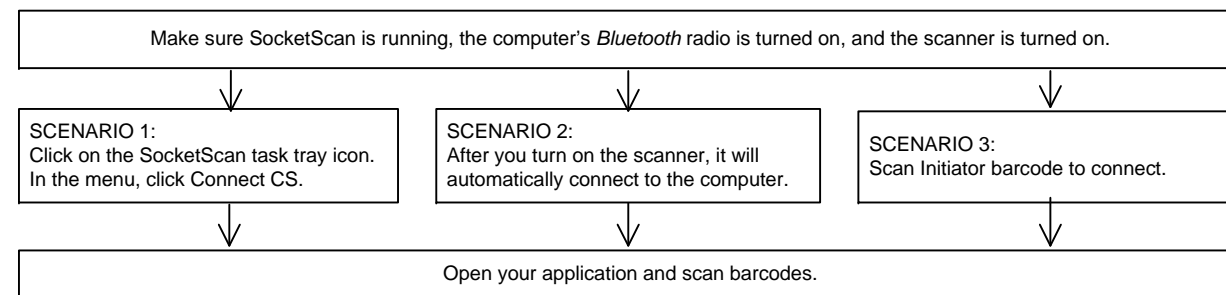


## INSTALLATION AND CONFIGURATION INSTRUCTIONS FOR WINDOWS 7 / VISTA / XP

Note: These instructions are for the Microsoft *Bluetooth* stack. For other *Bluetooth* stacks, please refer to the *User's Guide* for instructions.



### OPERATION INSTRUCTIONS





[www.L-TronDirect.com](http://www.L-TronDirect.com)

800-830-9523

[info@L-Tron.com](mailto:info@L-Tron.com)

596 Fishers Station Dr | Victor, NY | 14564 | Suite 1 A

[www.L-Tron.com](http://www.L-Tron.com)

Get in touch with us  
on social media!

