



TSP700II Series

High Speed Multi-functional Barcode, Label, Ticket and Receipt Printers



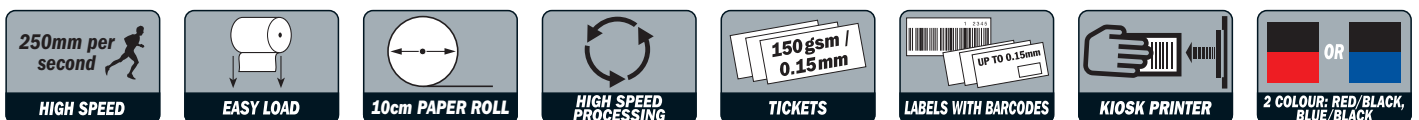
- Introducing the world's fastest single station receipt printer capable of producing barcodes, labels and tickets at a rapid 250mm per second
- Large paper roll diameter up to 100mm providing almost twice as much paper capacity
- "Drop-In & Print", easy paper loading. Literally drop a roll of paper into the printer, close the lid, and it's loaded!
- Full or partial cut autocutter (centre) MCBF 2 million cuts
- New splash resistant design with easy-clean curves for robust kitchen / bar use
- Available in Star white or Charcoal grey with serial, parallel, USB (WHQL certified) or no interface versions. User installable, low cost Ethernet option also available
- Compatibility with the majority of operating platforms with a quality suite of drivers including Microsoft WHQL certification for the TSP700II using the USB interface for seamless integration
- Double Density (406 x 203 dpi) print resolution for high quality graphics & ID photos
- Easy-to-use AutoLogo™ marketing / stock management tool with the ability to configure / download up to 15 graphics or coupons without any expensive software changes or complicated set up procedures

TSP700II Driver / Advanced Configuration utility

- The "Image List" allows users to name and even import multiple file types without having to use an external image editing utility. This is particularly useful for single users to prepare an image (size, shade, pixel output) and then test print it to check the final quality
- **NV logo** allows users to quickly and easily download logos to the printer
- Ability to change **Memory Switches** in an easy-to-use graphical user interface
- The new built-in **Ethernet Set-up** feature avoids having to download a separate utility
- The **Virtual Serial Port** allows communication over Ethernet or USB using software limited to serial output
- **Auto-Text Reverse** for vertical use is available from the Device settings menu in raster mode
- The **Enable Value Add function** allows users to use some *futurePRINT* features such as text processing and couponing. Please contact your reseller for more information.

Typical Applications

- **High Speed Receipt Printer**
- **Reliable Hospitality Printer** with "Splash Proof" cover
- **Barcode, Label & Ticket Printer** with External Paper Feed Path and Black Mark Sensor
- **Lottery Printer** 82.5mm print width with 1st column printing
- **Kiosk Printer** with four position usage and external paper feed path



sales@Star-EMEA.com

www.Star-EMEA.com



High speed, multi-functional printer, ideal for Labels, Barcodes, Receipts, Tickets and Kiosk



Easy-to-use AutoLogo™ graphics tool able to configure / download up to 15 coupons without any expensive software changes using a simple wizard-driven utility. Load & "ID" a graphic to then trigger a profit-making coupon etc.



Serial, Parallel and USB interface versions are available, plus a non interface version for use with Ethernet or WiFi



Splash Proof cover



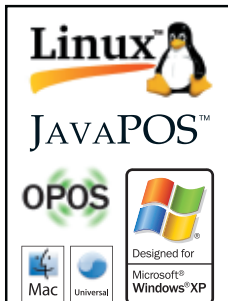
Receipt Rotation Tool



"Drop-In & Print" Easy Load



Flush fitting edges for new splash-resistant design

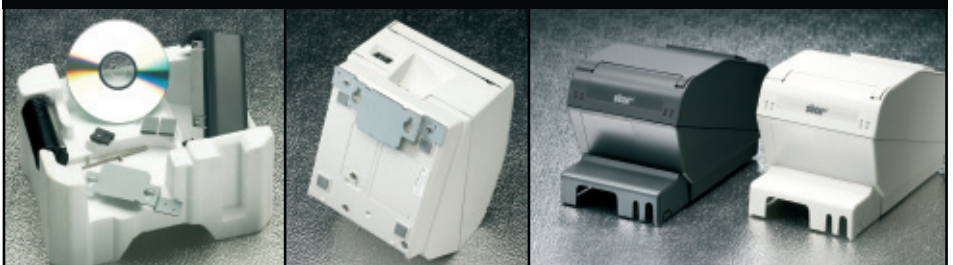


Compatibility with most major operating systems

TSP700II Printer Specifications

Printer Method	Direct Thermal Line Printing
Print Speed	up to 250mm / second
Print Resolution (vertical x horizontal) Double Density graphics	203 x 203 dpi 406 x 203 dpi (selectable for ID photos etc.)
Print Density	7 step selection by memory switch or control command
Character Matrix	12 x 24 dots, 9 x 24 dots
Two Colour Print Capability	Red, Blue and Black (special paper required)
No. of Columns (maximum)	48 / 64 or 53 / 71 (depends on Paper Width) incl. 1st column print for lottery applications
Character Set	ANK 95, 32 Int 128 Graphic
International Code Pages	Star Mode = 40. ESC/POST™ = 6 & 1 Blank allowing an additional character page to be added
Barcodes	9 versions / PDF417, QR (Maxicode Option Pending)
Line Spacing	3mm or 4mm + Programmable
Paper Feed Speed	up to 250mm / sec.
Paper Specifications:	
Width	80mm standard. 82.5 & 58mm also available by simply moving installed paper guide
Weight	0.065 ~ 0.15mm / 63 ~ 150gsm
Roll Diameter	100mm
Easy-Load	"Drop-In & Print"
Paper End / Black Mark Sensor	Standard
Near End Sensor	Two sensors for horizontal and vertical use
Maximum Print Width	80mm paper = 72mm, 82.5 paper = 80mm, 58 paper = 52mm
Top Margin	13mm default (3mm selectable via Memory Switch)
External Straight Paper Feed Path	Standard
Autocutter (guillotine)	Full or Partial cut selectable (centre cut)
Logo Store	2 Mbit Flash ROMs with graphic management software
Flash ROM	16Mbits
Drivers Available	Windows 2000/XP, Vista™, WePOS, OPOS™, Linux™, Java-POST™, POS.Net, Mac OS X, USB Vendor Class, Windows 98/ME/NT4 (download only)
Interface Versions	Serial, Parallel, USB, Non-interface versions with low cost Ethernet and WiFi options
Emulation	Star Line Mode & ESC/POST™
Peripheral Drive Circuit	2 circuits (24V max. 1A), 1 Compulsion input
Power Consumption	Operating / Waiting – Average 1.8 / 0.15A Uses PS60 – 24V with Hosiden connector
Operating / Storage Conditions:	
Temperature	5°C to 45°C / -20 to 60°C
Humidity	10% ~ 90% RH (without condensation) / 10% ~ 90% RH
Dimensions (without interface cover)	147 (w) x 213 (d) x 148 (h) mm / 1.75Kg
Safety Standards	UL, C-UL, TÜV, FCC, VCCI, EN55022, CE, Gost
Reliability:	
Printer	60 million lines (MCBF)
Autocutter (Guillotine)	2 million cuts
Options	Parallel, Serial, Ethernet, WiFi, USB Interface Wall & Vertical Mount Kits (Basic wall mount kit supplied with printer) PS60 24V Power Supply, Splash Proof Cover, Buzzer AutoLogo™ Marketing software download from www.Star-EMEA.com/techsupport

Accessories included with purchase



New features included in the box at purchase: Driver CD, Wall & Vertical mount kits, Interface & Power switch covers

UK8.08



sales@Star-EMEA.com

www.Star-EMEA.com



www.L-TronDirect.com

800-830-9523

info@L-Tron.com

596 Fishers Station Dr | Victor, NY | 14564 | Suite 1 A

www.L-Tron.com

