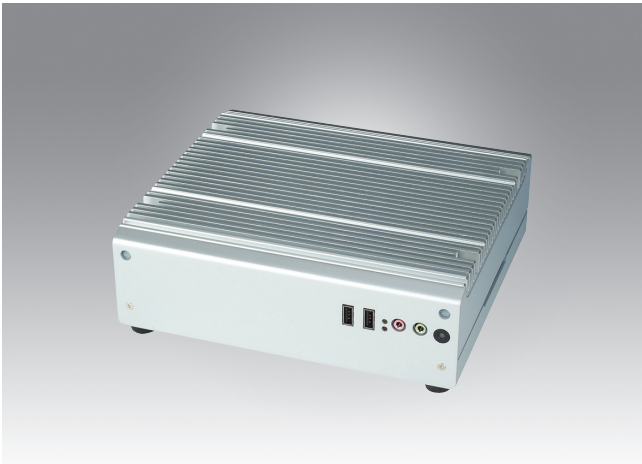


ARK-3202V

Mobile Intel® Atom™ N270 Fanless Solution with Dual Display and Multiple I/O



Features

- Intel® Atom™ N270 Processor at 1.6 GHz
- Dual display and support for wide screen with high resolution
- Supports 2 GbE, 5 x USB 2.0 ports and 5 COM ports
- Optional WLAN and HSDPA modules for advanced in-vehicle solutions
- In-vehicle power design and IGN support, compliant with ISO-7637-2
- GPS on-board for in-vehicle applications
- Works with both 12 and 24-volt systems
- IP40 rating

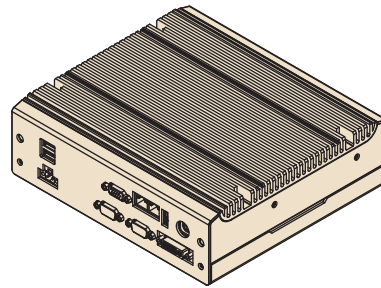
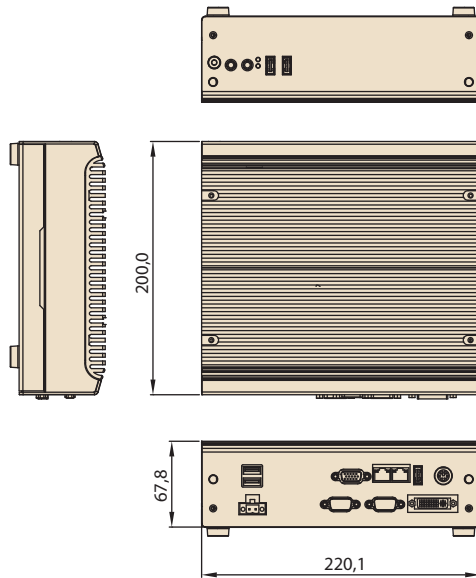


Specifications

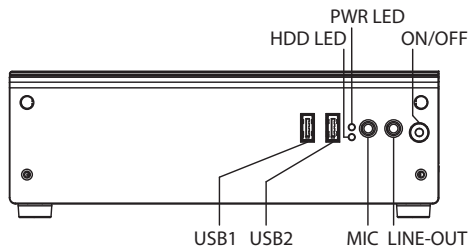
		ARK-3202V-S6A1E
Processor System	CPU	Intel Atom N270
	Max. speed	1.6 GHz
	System Chipset	Intel 945GSE + ICH7-M Chipset
	Front Side Bus	400/533MHz
	BIOS	Award 4 MB SPI BIOS
Memory	Technology	DDR2 400/533 MHz (945GSE)
	Max. Capacity	2 GB
	Socket	1 x 200-pin SODIMM
Graphics	Chipset	Integrated graphics built in Intel 945GSE
	Interface	CRT Interface DVI (Optional) 36-bit LVDS interface(Optional)
Ethernet	LAN 1	10/100/1000 Mbps Ethernet controller, support Wake On LAN
	LAN 2	10/100/1000 Mbps Ethernet controller, support Wake On LAN
Audio	Amplifier	2.2W amplifier
	Interface	Spkr-out, Mic-in
IO interface	Serial Interface	2 x RS-232 & 3 x RS-232/422/485 w/ Auto Flow Control
	USB Interface	5 x USB ports, Compliant with USB 2.0
Other	GPS	GPS onboard
	Watchdog timer	255-level timer interval, setup by software
Expansion	Mini PCIe	2 x Mini PCIe (with one SIM socket)
Storage	SSD	Supports CompactFlash socket for type I/II CompactFlash disk
Software Support	Microsoft Windows	XP Professional, XP Embedded
	Linux	Fedora 9.0
Power Requirement	Power Type	AT/ATX
	Power Input Voltage	9 V _{DC} ~ 32 V _{DC} (for In Vehicle)
	Minimum Power Input	9V-32V, 7.2A-2.0A
	Power Adapter	AC to DC, DC19 V/3.42 A, 65 W (Optional)
Power Consumption	Typical	Typical 13.3W (CPU is Intel Atom N270 1.6 GHz and w/o expansion)
	Max.	Max. 17.1W (CPU is Intel Atom N270 1.6 GHz and w/o expansion)
Mechanical	Construction	Aluminum housing
	Mounting	Desk/wall-mounting
	Dimensions (W x H x D)	220 mm x 68 mm x 200 mm (8.66" x 2.67" x 7.87")
	Weight	3 kg (6.6 lb)
Environment	Operating Temperature	With Industrial Grade CompactFlash disk: -20 ~ 60° C (-4 ~ 140° F)
	Storage Temperature	-40 ~ 85° C (-40 ~ 185° F)
	Relative Humidity	95% @ 40° C (non-condensing)
	Vibration Loading During Operation	With CompactFlash disk: 5 Grms, IEC 60068-2-64, random, 5 ~ 500 Hz, 1 Oct./min, 1 hr/axis. MIL-810 STD 514.5C-3
	Shock During Operation	With CompactFlash disk: 50 G, IEC 60068-2-27, half sine, 11 ms duration
	EMC	CE/FCC Class A, CCC, BSMI
	Safety Certifications	UL, CCC, BSMI
	In-Vehicle Certification	E-Mark E13, ISO-7637-2

Dimensions

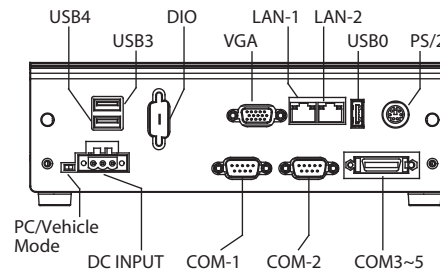
Unit: mm (inch)



Front Panel External I/O Mechanical Layout/Drawing



Rear Panel External I/O Mechanical Layout/Drawing



Packing List

Part Number	Description
-	1 x ARK-3202V Unit
-	1 x Driver/Utility CD/Manual
-	1 x User Manual (Simplified Chinese)
1960014487T00C	2 x Desk/Wall mount plate
1700018432	1 x 2-pin Phoenix DC power connector
1700018308	M Cable SCSI 26P(M)/D-SUB 9P(M)X3 COM, 10CM
1750001782	1 x Antenna GPS Active 5v 38 x 40 with 5M SMA cable

Ordering Information

Part Number	Description
ARK-3202V-S6A1E	Intel Atom N270 1.6 GHz Compact Embedded Box IPC, w/ 2 x GbE, 5 x USB 2.0, 5 x COM, 2 x Mini PCIe, GPS, VGA, Audio

Optional Items

Part Number	Description
1757003659	AC-to-DC Adapter, DC19 V/3.42A 65W, with Phoenix Power Plug, 0 ~ 40° C for Home and Office Use
1757002682	AC-toDC adaptor DC19V/3.42A 65W, 0-40C, for Japan with PSE
1700001947	Power cable 2-pin 180 cm, USA for ARK-338X
1700001948	Power cable 2-pin 180 cm, Europe for ARK-338X
1700001949	Power cable 2-pin 180 cm, UK for ARK-338X
1700008921	Power cable 3-pin 180cm, Japan for 1757002682
1652004519	3pin terminal block for ARK-3202V DC input, use with 1757002682
1700009398	LVDS power cable for ARK-3202
AM0-HSDPA01E	3.5G HSPPA Module

Embedded OS

Part Number	Description
2070009503	WES 2009 ENG/FR/GE/IT/SP
2070009504	WES2009 ENG/CHT/CHS/JPN
2070010050	Win CE 6.0 Pro



www.L-TronDirect.com

800-830-9523

info@L-Tron.com

596 Fishers Station Dr | Victor, NY | 14564 | Suite 1 A

www.L-Tron.com

