

IPPC-7158B

15" XGA TFT LCD Passive Backplane Industrial Panel PC with 14 Expansion Slots and Keypad



Features

- 15" XGA TFT LCD with touchscreen (optional) provides vivid, sharp images
- Offers 14 expansion slots for PCI, PICMG and ISA
- Detachable side-open front panel makes maintenance fast & easy
- Programmable membrane function keys for varied application access
- Heavy-duty design with anti-rust chassis with aluminum front panel which meet IP65
- One front accessible USB 2.0 port
- Flexible modular chassis design with upgradable industrial motherboard

Introduction

The IPPC-7158 is a brand new Industrial Panel PC with 15" XGA TFT LCD. It supports passive backplane boards with ISA/PCI/PICMG expansion slots. IPPC-7158 provides many powerful features such as a detachable side-open front panel, a front-accessible USB 2.0 port, programmable membrane function keys & touch pad, OSD Control, IP65 aluminum front panel, and optional analog resistive touchscreen (USB Interface).

Specifications

General

- **Button Control** Membrane Keypad 1 43 operating keys
Membrane Keypad 2 10 programmable macro function keys
- **Certification** BSMI, CCC, CE, FCC Class A
- **Dimensions (W x H x D)** 482 x 354.8 x 276.5 mm (18.97" x 13.96" x 10.9")
- **Enclosure** Front Panel – Die-cast
Chassis – anti-rust
- **Mounting** 19" Rack
- **Power Input** 100-240 V_{AC}, 10 A, 60-50 Hz
- **Power Supply** 300 W
- **Weight** 18Kg (39.7 lbs)

System Hardware

- **Slots** 2 ISA, 10 PCI, 2 PICMG
- **Size** 315 x 260 mm (12.4" x 10.24")
- **PCI Bridge** Pericom PI7C8150MA
- **PCI Slot** Primary: 3 slots,
Secondary: 7 slots
- **Storage (Optional)** 1 x 3.5" HDD
1 x 5.25" CD-ROM

LCD Display

- **Backlight Life** 50,000 hrs
- **Contrast Ratio** 700 : 1
- **Display Size** 15"
- **Display Type** XGA TFT LCD
- **Luminance** 250 cd/m²
- **Max. Colors** 16.2 M (RGB 6-bit + FRC data)
- **Max. Resolution** 1024 x 768
- **OSD Control** ON/OFF, Brightness down, up (behind the front panel)
- **Viewing Angle (H/V°)** 160/130

Touchscreen (Optional)

- **Lifespan** 10 million with a silicone rubber of R8 finger, writing rate is by 250g at 2 times/s
- **Light Transmission** > 80% (AMT)
- **Type** 8-wire Resistive

Environment

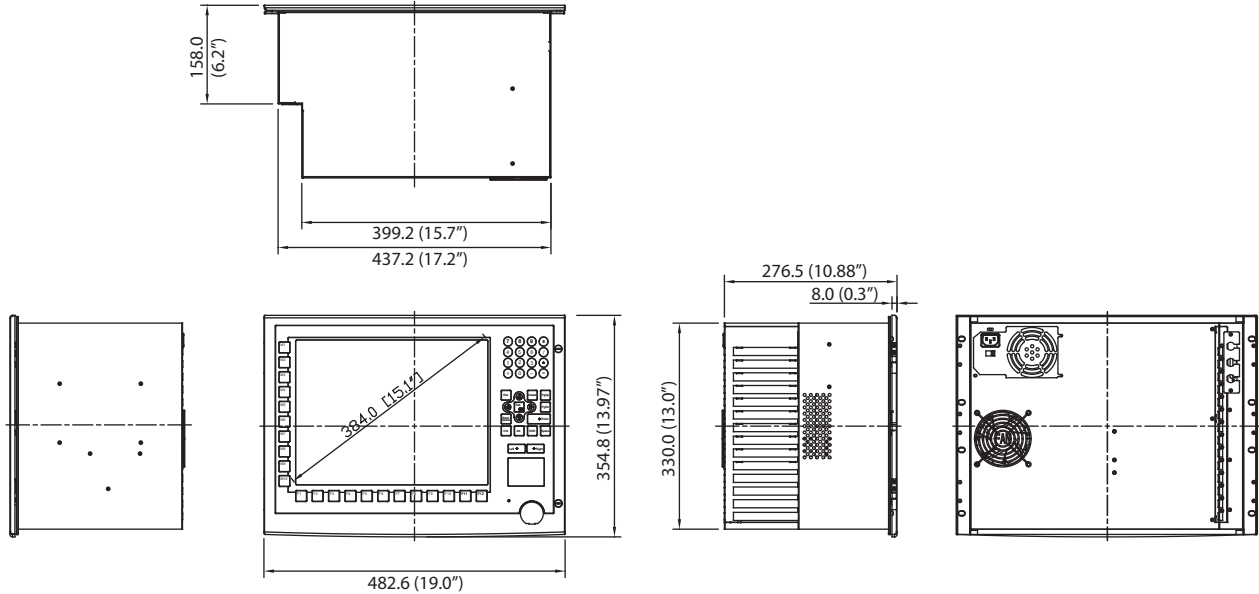
- **Humidity** 5 – 85% RH @ 40°C (non-condensing)
- **Ingress Protection** Front panel IP65
- **Operating Temperature** 0 ~ 50°C (32 ~ 122°F)
- **Storage Temperature** -20 ~ 60°C (-4 ~ 140°F)
- **Vibration Protection** 5 – 500 Hz, 1 GRMS random vibration (operating)

Ordering Information

- **IPPC-7158B-X1AE** 15" Ind. Panel PC, Backplane, 14 x Slot, Keypad
- **IPPC-7158B-R1AE** 15" Ind. Panel PC, Backplane, 14 x Slot, Keypad, TS

Dimensions

Unit: mm



Panel Cut-out Dimensions: 439.30 (17.29") x 332.00 (13.07) mm

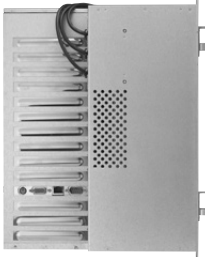
CPU Card Suggestions

Part No	CPU Grade	Description
PCA-6194G2-00A1E	Intel Core 2 Duo (1066/800/533 MHz FSB)	LGA775 Core 2 Duo/Pentium D/ Pentium 4/Celeron D Processor Card with IPMI/VGA/Dual GbE LAN (FSB 1066/800 MHz)
PCA-6190VG-00A2E	Intel Pentium 4 (533/800 MHz FSB)	LGA775 Pentium 4/Celeron Processor Card with VGA/LAN/
PCA-6187VG-00A2E	Intel Pentium 4 (400/533/800 MHz FSB)	Socket 478 Pentium 4/Celeron D/ Celeron Processor Card with VGA/ LAN
PCA-6008VG-06A1E	Intel Pentium M/ Celeron M (533 MHz FSB)	Socket 479 Pentium M/ Celeron M Processor Card with VGA/ DVI/ Dual GbE LAN

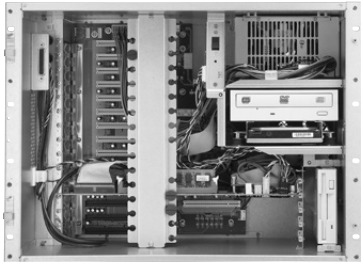
Accessories

- 1702002600 Power Cable US Plug 1.8 M
- 1702002605 Power Cable EU Plug 1.8 M
- 1702031801 Power Cable UK Plug 1.8 M
- 1702031836 Power Cable China/Australia Plug 1.8 M

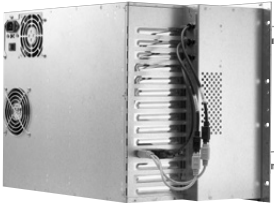
Side View



Open View



Rear View





www.L-TronDirect.com

800-830-9523

info@L-Tron.com

596 Fishers Station Dr | Victor, NY | 14564 | Suite 1 A

www.L-Tron.com

