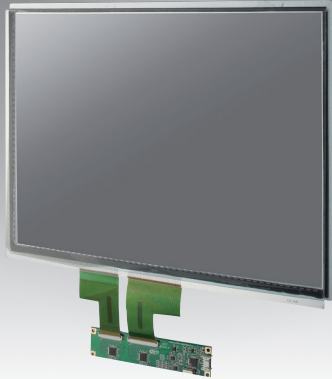


IDK-1115P

15" XGA Industrial Display kit with PCT Touch Solution

NEW



Features

- 15" LCD supports 1024 x 768 pixels and wide operating temperature (-20 ~ 70° C)
- Brightness of 400 cd/m² with LED backlight
- Projected Capacitive touch solution
- High contrast ratio of 700:1
- High uniformity of 85%
- LVDS signal interface
- Low power consumption 10.8 W (panel only)
- Touch controller included (USB)
- Anti Reflector surface treatment (optional)
- Optical bonding (optional)

Introduction

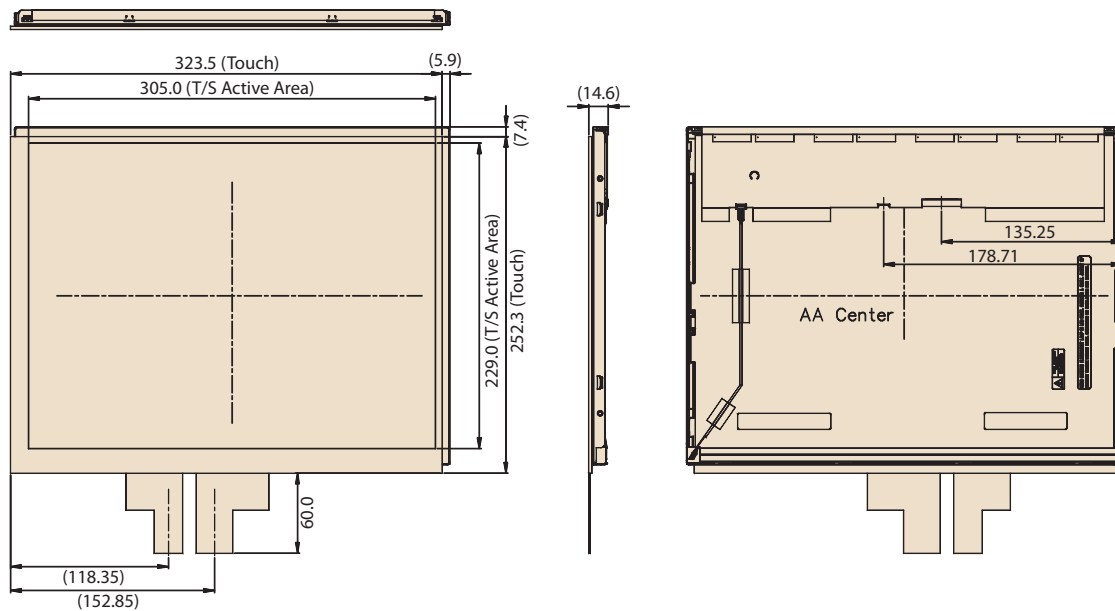
The Advantech IDK-1115P series comes with a 15" industrial grade LCD display with Projected Capacitive touch, supporting 2-point touch. IDK-1115P series supports Projected Capacitive touch with low power consumption at the maximum of 10.8W. IDK-1115P series is ideal for embedded applications which customers have maximum flexibility for mechanical design.

Specifications

LCD Panel	Display Size	15" LED backlight panel
	Resolution	1024 x 768
	Viewing Angle (U/D/L/R)	70° / 70° / 80° / 80°
	Brightness	400 cd/m ²
	Backlight Life (hrs)	50,000hrs
	Contrast Ratio	700 : 1
	Response Time (ms)	8 ms
	Colors	6 Bit (262 K) / 8 Bit (16.2 M)
	Voltage	3.3 V Power
	Consumption	10.8 W
	Signal Interface	1 channel LVDS
	Weight	1300 g
	Dimensions (W x H x D)	323.5 x 259.7 x 14.6 mm
Touch Screen	Touch Screen	Projected Capacitive Touch
	Transparency	91%
	Surface Hardness	5H
	Durability	50 million times
Environment	Operating Temperature	-20 ~ 70° C
	Storage Temperature	-20 ~ 75° C
	Humidity	8~ 90% @ 39° C., non-condensing

Dimensions

Unit: mm



Ordering Information

Part No.	Size	Brightness (cd/m ²)	Interface	Touch screen	Touch Interface
IDK-1115P-40XGC1E	15"	400	LVDS	Projected Capacitive Touch	USB

Packing List

Part Number	Description
9680014408	1 x Projected Capacitive Touch controller
1700020324-01	1 x USB Touch cable
2066111500	1 x CD-ROM for User manual and touch driver

Note: Package contents are subject to change without prior notice

Optional Order

SBC Part No.	LVDS cable P/N	Display interface	B/L cable P/N	Touch interface	Touch power input
MIO-5270	96CB-L2040PCG4	LVDS: Single channel 18bit (XGA)	96CB-E0505PAC3 (12V: PWM)	USB	5 V
PCM-9362	96CB-L2020PCG2	LVDS: Single channel 18bit (XGA)	96CB-E0505PAC3 (12V: PWM)	USB	5 V
AIMB-270	96CB-L2040PCG4	LVDS: Single channel 18bit (XGA)	96CB-E0505PAC3 (12V: PWM)	USB	5 V

For more compatible embedded board solution, please visit our Build Your display web page as bellow
<http://www.advantech.com/buildyourdisplay>



www.L-TronDirect.com

800-830-9523

info@L-Tron.com

596 Fishers Station Dr | Victor, NY | 14564 | Suite 1 A

www.L-Tron.com

Get in touch with us
on social media!

