

Keyboards



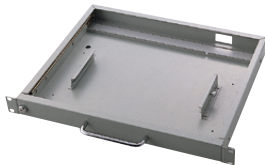
KBD-6307
105-key Keyboard with Touchpad

- 105-key, supports Windows key
- Built-in pressure activated touchpad, fully compatible with Windows, supporting plug & play
- Spiral cable with PS/2 keyboard & mouse connector
- Dimensions (W x H x D): 392 x 26 x 255 mm (15.4" x 1" x 10")
- Weight: 2 kg (8.8 lb)
- CE compliant
- Language: English
- P/N: KBD-6307



KBD-6312
Rackmount 105-key Keyboard with Touchpad

- 105-key, supports Windows key
- Built-in pressure activated touchpad, fully compatible with Windows, supporting plug & play
- Spiral cable with PS/2 keyboard & mouse connector
- 19" rackmount
- Height: 1U (44.4 mm, 1.75")
- Ball-bearing slide rail with handle and lock
- Dimensions (W x H x D): 482 x 44.4 x 360 mm (19" x 1.75" x 14.2")
- Language: English
- P/N: KBD-6312 (beige keyboard / beige rack)
KBD-6312-BLK (beige keyboard / black rack)



KBD-RMK
Rackmount Keyboard Drawer

- 19" rackmount
- Height: 1U (44.4 mm, 1.75")
- Ball-bearing slide rail with handle and lock
- Compatible with KBD-6304, KBD-6305 and KBD-6307
- 2 mounting brackets and 4 screws included
- Dimensions (W x H x D): 482 x 44.4 x 360 mm (19" x 1.75" x 14.2")
- Weight: 1.5 kg (3.3 lb)
- CE compliant
- P/N: KBD-RMK (beige), KBD-RMK-BLK (black)



PCA-6302
Compact 104-key Keyboard

- 104-key with tactile response
- AT & PS/2 compatible
- Over 20 million life cycles
- Spiral cable with 6-pin PS/2 keyboard connector (not including PS/2 to 5-pin DIN PC/AT adapter)
- Dimensions (W x H x D): 400 x 40 x 188 mm (15.7" x 1.6" x 7.4")
- Language: English, Chinese
- P/N: PCA-6302, PCA-6302C



KBD-6304
Compact 88-key Keyboard

- 88-key with membrane structure
- PC/AT, PS/2, DOSV compatible
- 5 million life cycles
- Spiral cable with 6-pin PS/2 keyboard connector (not including PS/2 to 5-pin DIN PC/AT adapter)
- Dimensions (W x H x D): 287 x 29 x 140 mm (11.3" x 1.14" x 5.5")
- Weight: 0.5 kg (1.1 lb)
- CE, FCC, UL, CSA, CNS compliant
- Language: English, Chinese
- P/N: KBD-6304 (English), KBD-6304C (Chinese)



KBD-6305
Compact 88-key Keyboard with Touchpad

- 88-key with membrane structure
- PC/AT, PS/2, DOSV compatible
- Built-in touchpad for pointing input device
- 5 million life cycles
- Spiral cable with PS/2 keyboard & mouse connector (not including PS/2 to PC/AT and PS/2 to DB-9 adapters)
- Dimensions (W x H x D): 289 x 27 x 227 mm (11.4" x 1.06" x 8.9")
- Weight: 0.8 kg (1.76 lb)
- CE, FCC, UL, CSA, CNS compliant
- Language: English
- P/N: KBD-6305



www.L-TronDirect.com

800-830-9523

info@L-Tron.com

596 Fishers Station Dr | Victor, NY | 14564 | Suite 1 A

www.L-Tron.com

Get in touch with us
on social media!

