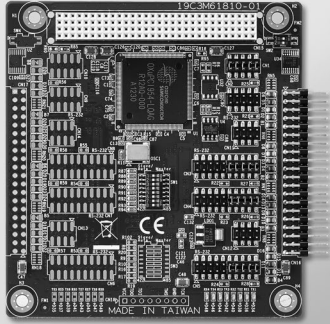


PCM-3614I

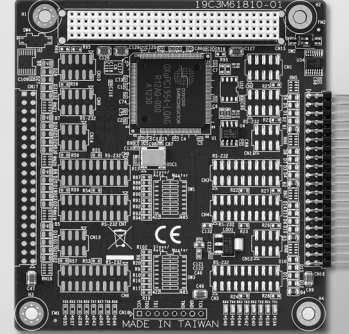
PCM-3641I

4-port RS-232/422/485 PCI-104 Module

4-port RS-232 PCI-104 Module



PCM-3614I



PCM-3641I



Features

- Automatic RS-485 data flow control
- Shared IRQ settings for each port
- LED indicators: TX, RX
- Standard PC ports: COM1, COM2, COM3, COM4 compatible
- Supports Windows 2000/XP/Vista/7 and Linux
- Supports WinCE 5.0/6.0
- Powerful and easy-to-use utility (ICOM Tools)

Specifications

General

- **Card Interface** PCI-104
- **Connectors** 1 x 40-pin header
- **Ports** 4
- **Power Consumption** +5V @ 450 mA

Communications

- **Data Bits** 5, 6, 7, 8
- **Data Signals** RS-422: TxD+, TxD-, RxD+, RxD-
RS-485: DATA+, DATA-
RS-232: TxD, RxD, RTS, CTS, DTR, DSR, DCD, RI
- **IRQ** 3, 4, 5, 6, 7, 9, 10, 11, 12, 15
- **Parity** None, Even, or Odd
- **Speed** 50 bps ~ 921.6 kbps
- **Stop Bits** 1, 1.5, 2
- **Termination Resistor** 120 Ω

Environment

- **Operating Humidity** 0 ~ 90 % RH
- **Operating Temperature** -40 ~ 85°C (-40 ~ 185°F)
- **Storage Temperature** -40 ~ 85°C (-40 ~ 185°F)

Ordering Information

- **PCM-3614I** 4-port RS-232/422/485 PCI-104 Module
- **PCM-3618I** 8-port RS-232/422/485 PCI-104 Module

Features

- Transmission speeds up to 460 kbps
- Shared IRQ settings for each port
- Standard PC ports: COM1, COM2, COM3, COM4 compatible
- Supports Windows 2000/XP/Vista/7 and Linux
- Supports WinCE 5.0/6.0
- Powerful and easy-to-use utility (ICOM Tools)

Specifications

General

- **Card Interface** PCI-104
- **Connectors** 1 x 40-pin header
- **Ports** 4
- **Power Consumption** +5V @ 250 mA (max.)

Communications

- **Data Bits** 5, 6, 7, 8
- **Data Signals** TxD, RxD, RTS, CTS, DTR, DSR, DCD, RI
- **IRQ** 3, 4, 5, 6, 7, 9, 10, 11, 12, 15
- **Parity** None, Even, or Odd
- **Speed** 50 bps ~ 460.3 kbps
- **Stop Bits** 1, 1.5, 2
- **Termination Resistor** 120 Ω

Environment

- **Operating Humidity** 0 ~ 90 % RH
- **Operating Temperature** -40 ~ 85°C (-40 ~ 185°F)
- **Storage Temperature** -40 ~ 85°C (-40 ~ 185°F)

Ordering Information

- **PCM-3641I** 4-port RS-232 PCI-104 Module



www.L-TronDirect.com

800-830-9523

info@L-Tron.com

596 Fishers Station Dr | Victor, NY | 14564 | Suite 1 A

www.L-Tron.com

