



# E-Class™ Mark III

## Desktop Barcode Printers ■ ■ ■

### features at a glance ■ ■ ■

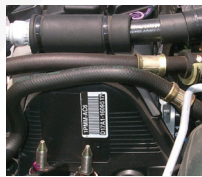
- **Easy Loading** - The horizontal split cabinet with a rear hinge allows for easy ribbon and label loading.
- **Rugged Construction** - Double wall construction and concentric hinges provide rugged structural integrity.
- **Wrap around media window** - Allows operator to visually verify the media level without interrupting the printing operation.
- **Safe from spills** - The sealed user interface panel is sealed to prevent liquids and debris from damaging the sensitive user controls.
- **Lowered Ribbon Costs** - Larger one-inch core standardized ribbons cost less than the typical smaller desktop ribbons.
- **Large Media Roll** - Reduce interruptions and increase up time with larger media capacity on the Professional + model.
- **Internal Fan Fold Stack** - Protects media from the environment and eliminates curl on the Professional + model.
- **Easy Serviceability** - No tools or experience required to replace the most critical parts, the printhead and platen roller.
- **Large Graphical Display** - Allows for quick and easy changes and provides visual status indication (Professional models only).
- **Optional Wireless** - 802.11 a/b/g and Bluetooth communication makes it easy to share, manage, and place printers where you need them (Professional models only).
- **Battery Pack** - Go mobile with the long lasting MPU-400 battery pack accessory.

The E-Class *Mark III* is a family of compact desktop thermal printers that are designed for a wide variety of industries and applications that require a reliable and cost effective barcode printer. Datamax-O'Neil applied its industrial printer expertise to provide customers with an entry level printer that has the features and reliability normally found in more expensive printers. The E-Class *Mark III* is affordable to own, easy to use and economical to operate.

We've made the E-Class *Mark III* easy to use with quick loading media and an interactive LCD screen. Users will also notice a substantial reduction in their daily operational costs thanks to the E-Class *Mark III's* larger media and ribbon roll capacity. The E-Class *Mark III* is one of the best values on the market. It is competitively priced with a proven design and reliable performance that will continue to operate long after other printers have failed.

Why pay for features you don't need? The E-Class is available in four distinct models that offer the features necessary to meet the broadest range of customer requirements. A breakdown of features for each model is provided in the table on the next page.

### popular applications ■ ■ ■



#### Manufacturing

- Product Labels
- Work-in-Progress
- Repairs Tracking
- Agency Labels
- Instructions



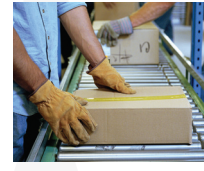
#### Retail

- Item Labels
- Shelf Tags
- Specials and Talkers
- Returns Labeling/Tagging



#### Healthcare

- Specimen Tracking
- Records Labeling
- Patient ID Wristbands
- Asset Identification
- Pharmacy



#### Postal Service

- Shipping Labels
- Parcel Routing
- Delivery Management

### your benefits ■ ■ ■



**Affordable to Own** - The E-Class *Mark III* was carefully designed to maximize your investment value by offering a competitive purchase price, double walled construction for increased durability and a proven design for long term reliability.



**Easy to Use** - The E-Class *Mark III* makes it easy to replace existing printers or install new ones with popular language emulations included with each printer and a selection of connectivity options. Users will appreciate the easy-to-use LCD screen and quick loading media/ribbon.



**Economical to Operate** - The E-Class *Mark III* reduces daily operational costs by minimizing power consumption, and reducing the costs associated with printer consumables such as labels and ribbons.



#### Did you know?

Using quality labels and paper can significantly prolong the life of your printhead. Datamax-O'Neil offers a wide variety of high quality media for its printers including custom and stock labels and receipts, ticketing media, and cleaning products. When you choose Datamax-O'Neil, you receive a proven commitment to superior quality. Quality that results in performance and compatibility... Guaranteed.



datamax • o'neil  
right by our customers.

# product specifications ■ ■ ■

## Basic



The Basic model meets the needs of the most popular barcoding applications. USB and serial ports are included as standard features. Optional 300dpi, thermal transfer and label peeler are also available.

## Advanced



The Advanced model is for applications that need networking communications, faster print speed, or special media compatibility. The Advanced model includes all the features and options of the Basic, plus it includes parallel and Ethernet communications ports, a positionable media indexing sensor and prints at up to 5 inches per second.

## Professional



The Professional model is for sophisticated applications that require a higher level of interface capabilities, higher performance, and wireless communications. It features a graphical display with a navigational menu interface, real time clock, audible alarm, USB host connectivity, faster print speed, and optional wireless LAN and Bluetooth communications.

## Professional+



The Professional + (plus) model is for applications that require a large internal media capacity. The Professional + has all the features of the Professional, including a large internal roll, internal fan folded media, and an optional cabinet lock.

### Model

E-4204B (203dpi)  
E-4304B (300dpi)

E-4205A (203dpi)  
E-4305A (300dpi)

E-4206P (203dpi)  
E-4305P (300dpi)

E-4206L (203dpi)  
E-4305L (300dpi)

### Communication Options

USB 2.0  
Serial RS232

USB 2.0  
Serial RS232  
Parallel Bi-directional  
10/100 BaseT Ethernet

USB 2.0  
Serial RS232  
Parallel Bi-directional  
10/100 BaseT Ethernet

USB Host  
802.11 a/b/g Wireless LAN (optional)  
Bluetooth® v2.0 (optional)

### Dimensions

8.01" w x 7.36" h x 11.10" d (203.5mm x 187mm x 282mm)

8.01" w x 9.56" h x 14" d  
(203.5mm x 243mm x 356mm)

### Weight

5.25 lbs (2.4 kg)

7.7 lbs (3.5 kg)

### Speed

4ips (101mm/s)

5ips (127mm/s)

6ips (152mm/s) @ 203dpi; 5 ips (127mm/s) @ 300dpi

### Maximum Print Width

4.25" (108 mm) @ 203dpi (8 dots/mm); 4.16" (106 mm) @ 300dpi (12 dots/mm)

### Maximum Media Roll Diameter

5" (127 mm)

7.2" (183 mm)

### Media Core Diameter

Min: 1" (25 mm) / Max: 1.5" (38 mm)

Min: 1" (25 mm) / Max: 3" (76 mm)

### Memory

64MB Flash / 16MB DRAM

64MB Flash / 32MB DRAM

### Power Source Options/Accessories

Fitted Lower Enclosure for Power Converter (optional)  
Fitted Lower Enclosure for Power Converter & Battery Pack (accessory)

Does not attach to cabinet

### Indicators/Display

Two Light Indicators with 3 Colors

Two Light Indicators with 3 Colors  
Monochrome Multi-Line Graphical Display  
Configuration Menu System  
Audible Alert  
Real Time Clock

# key benefits ■ ■ ■

## 3 Dimensions of Value

Value is more than just the purchase price of a product. It is a balance between cost, features and sustainability. We call this the 3 Dimensions of Value. The E-Class *Mark III* incorporates all these dimensions. It is affordable to own, easy to use and economical to operate.

### Affordable to Own



#### Competitive Purchase Price

The E-Class *Mark III* is priced lower than other printers in its category.

#### Durable Construction

We've utilized proven designs and rugged double wall construction to ensure that your printer will last longer than other printers on the market.

#### Reliable Performance

Unlike ink jet and laser printers, the E-Class *Mark III* is designed to handle sticky labels reliably and does not require constant cleaning and servicing.

#### Low Maintenance

Aside from the printhead and platen roller, the E-Class *Mark III* has a relatively small number of moving parts to wear out and will save you money in repairs.

### Easy to Use



#### Change Media Faster and Less Often

Media rolls are easy to change and the ribbon rolls are 3 times larger so you do it less often.

#### Simple to Operate

The E-Class *Mark III* includes easy-to-use controls and the Professional models include a large graphic display.

#### Easy to Install

Installation is easy with a variety of wired and wireless communication options, Windows® drivers and factory/dealer level resets.

#### Language Emulation Operating System

The printer's operating system understands many printer languages so system integration does not require programming changes.

### Economical to Operate



#### Minimize Power Consumption

The E-Class *Mark III* has a stationary printhead that only heats the exact dots needed saving you energy.

#### Lower Material Cost

Unlike most small desktop printers, the E-Class *Mark III* uses economical, high capacity ribbons that effectively pay for the printer.

#### Reduce Material Waste

Unlike laser or inkjet printers that waste media, the E-Class *Mark III* prints individual labels, allowing you to print exactly what you need so there are never any unprinted labels to throw away.



#### Did you know?

Datamax-O'Neil **Extended Warranties** provide the coverage you've been seeking for the worry-free operation of your printer long after the original warranty period has expired. Extended Warranties include quick response times, a variety of comprehensive options and a broad choice of contract duration options. *(not available in all countries)*



# product specifications ■ ■ ■

## print technology ■ ■ ■

- Printer type:
  - Direct thermal; optional thermal transfer
- Print length range:
  - 0.375" - 99" (9.5mm - 2514mm)
- Resolution:
  - 203 dpi (8 dots/mm)
  - Optional 300 dpi (12 dots/mm)

## physical characteristic ■ ■ ■

- Color:
  - Pantone® warm gray
- Operating temperature:
  - 40°F to 95°F (4°C to 35°C)
- Construction:
  - Split case with rear concentric hinge
  - Double walled high strength thermoplastic
  - Clear wrap around media window
- Power source:
  - Auto-ranging power converter

## integration ■ ■ ■

- Communication Ports:

	Basic	Adv	Pro	Pro+
Serial RS232			Standard	
USB 2.0			Standard	
Parallel Bi-directional			Standard	
10/100 BaseT Ethernet			Standard	
USB Host			Standard	
802.11 a/b/g			Optional	
Bluetooth® v2.0			Optional	

- 802.11 a/b/g:
  - Network standard: IEEE 802.11 a/b/g
  - Wireless access modes: Infrastructure and ad-hoc
  - Security Protocols:

	WEP	WPA	WPA2
Modes		PSK/Enterprise	
Security/Encryption	64/128	TKIP/RC4	CCMP/AES
Authentication	LEAP, EAP-PEAP, EAP-FAST, EAP-TTLS, EAP-LEAP		

- Network support: DHCP, TCP/IP, UDP, DNS, BOOTP
- Software:
  - NETira CT: Configuration tool (Professional models only)
  - DMX Config: Printer configuration tool (Basic and Advanced models only)
  - DMX Net Manager: Networked printer management tool (Advanced models only)
  - Embedded Configurator: Resident printer configuration tool
  - Drivers: Windows® XP, Windows® Vista, Windows® NT
- Firmware:
  - Updates: Available online
  - Universal Printer Command Language Support:
    - PL-Z(ebra) PL-B(oca)
    - PL-I(Intermec) PL-E(ltron)

## barcodes/fonts/graphics ■ ■ ■

- Barcodes:
  - Linear: Code 3 of 9, UPC-A, UPC-E, Interleaved 2 of 5 (1 2 of 5), Code 128, EAN-13, EAN-8, HBIC, Codabar, Interleaved 2 of 5 with a module 10 checksum, Plessey, Interleaved 2 of 5 with a module 10 checksum & shipping bearer bars, 2 digit UPC addendum, 5 digit UPC addendum, Code 93, Postnet, UCC/EAN Code 128, K-Mart NON EDI barcode, Telepen
  - 2D Symbolologies: UPS MaxiCode, FIM, PDF-417, DataMatrix, QR Code, Aztec, Code 128 with auto Subset Switching, GS1 Databar (replaced RSS), TCIF Linked Bar Code 3 of 9 (TLC39), MicroPDF 417
- Resident fonts:
  - Ten alphanumeric fonts from 0.08" to 0.25" (2mm to 6mm) including OCR-A, OCR-B, CG Triumvirate™ smooth font from AGFA®
- Downloadable font types:
  - True-Type, AGFA® Intellifont™, Bitmap
- Character set:
  - Modified IBM® Code Page 850; includes characters for English and most European, Scandinavian and Spanish speaking countries.
  - 50 Resident code pages
- Font expansion/rotation:
  - All fonts expandable vertically and horizontally up to 24x; fonts and graphics can be printed in four directions: 0°, 90°, 180° and 270°s
- Graphics supported:
  - .PCX, .BMP, .IMG format files
- Reversible field/mirror image:
  - Any font or graphic field can be printed as a normal or reverse image

## agency approval ■ ■ ■

Contact sales representative for the most current approval list

## warranty ■ ■ ■

- Printer\*: 1 year (including platen roller and installed options)
- Printhead\*: 1 year or 1,000,000 inches whichever comes first
- Contact sales representative for extended warranty options

*\*when used with approved supplies*

## media compatibility ■ ■ ■

- Label/tag roll:
  - Width range: 0.75" – 4.40" (19 – 112mm)
  - Thickness range: 0.0025" - 0.01" (0.06 - 0.25mm)
  - Winding: wound in or out
- Ribbons:
  - Maximum outside diameter: 2.6" (65mm)
  - Core diameters: 0.5" (13mm) or 1" (25mm) - requires provided adaptors
  - Minimum core widths: 4.3" (109mm) for 0.5" diameter or 1" (25mm) for 1" diameter
  - Maximum core width: 4.3" (109mm)
  - Width range: 1" – 4.3" (25mm – 109mm)
  - Winding: coated side in (CSI) or coated side out (CSO)
- Index Sensor Range:
  - Transmissive (top and bottom sensor combination): gap, hole or notch
    - » Basic: 0.19" (5mm) right of CL
    - » Adv/Pro/Pro+: 1.65" (42mm) left of CL to 1.33" (34mm) right of CL
  - Reflective (bottom sensor only) bar, hole or notch
    - » Basic: 0.19" (5mm) right of CL
    - » Adv/Pro/Pro+: 2.28" (58mm) left of CL to 1.33" (34mm) right of CL
- Internal fanfold stack (Pro+ models only):
  - Maximum depth: 6.5" (165mm)
  - Maximum height: 5.3" (135mm)
  - Maximum width: 4.25" (108mm)

## accessories ■ ■ ■

- Battery pack
- External rewinder
- Auto Loading Chute (not available for Pro+)
- External media (large roll) holder
- Security Kit - Cabinet Lock and Tethering Point (Pro+ only)

## options ■ ■ ■

- Thermal transfer (includes 1" ribbon adaptors)
- High resolution (300 dpi)
- Wireless LAN field installable (Professional models only)
- Bluetooth® v2.0 field installable (Professional models only)
- Label (peeler) Dispenser w/Sensor field installable
- Cutter w/Sensor field installable (Not available on Basic)



datamax • o'neil  
right by our customers.

A DOVER Company

[www.datamax-oneil.com](http://www.datamax-oneil.com)

Specifications subject to change without notice. All brand names, product names or trademarks belong to their respective holders. Copyright 2012, Datamax-O'Neil (rev. 20120430)



[www.L-TronDirect.com](http://www.L-TronDirect.com)

800-830-9523

[info@L-Tron.com](mailto:info@L-Tron.com)

596 Fishers Station Dr | Victor, NY | 14564 | Suite 1 A

[www.L-Tron.com](http://www.L-Tron.com)

Get in touch with us  
on social media!

