

# XG Series Accessories

Janam offers a full suite of accessories for the XG Series. From its holster and charging solutions to the cables and cradles for every communication protocol, the XG Series' efficient system of accessories includes everything needed for inside the four walls of the enterprise.

## Cradle Kits



**Single-Slot USB/Serial Cradle Kit**  
(CKT-G1-001U)

Includes cradle, power supply, line cord and communications cable

---



**Single-Slot Ethernet Cradle Kit**  
(CKT-G1-001E)

Includes cradle, power supply and line cord

---



**Four-Slot Cradle Kit**  
(CKT-G4-001C)

Includes cradle, power supply and line cord (back of cradle pictured here)

---



**Four-Slot Ethernet Cradle Kit**  
(CKT-G4-001E)

Charge and sync four devices (back of cradle pictured here)

## Cables



**DEX Cable**  
(CAB-J-001DX)

Requires power supply (PK-G1-001)

---



**RS232 ActiveSync/Charging Cable**  
(CAB-J-001SP)

2500mAh 7.4V

---



**USB Syncing/Charging Cable**  
(CAB-J-001UC)

Requires power supply (PK-G1-001) to charge a device

---



**USB Host Cable**  
(CAB-J-001UH)

Requires power supply (PK-G1-001) to charge a device

---



**Power Supply**  
(PK-G1-001)

Use with CAB-J-001UC, CAB-J-001UH, CAB-J-001SP and CAB-J-001DX

## Batteries/Chargers



**Battery**  
(BAT-G1-001)

2500mAh 7.4V



**Four-Slot Battery Charging Base**  
(BK-G4-001)

Includes charger, power supply and line cord

## 2D Scanning Firmware



**2D Decode Firmware Upgrade**  
(2D-XP-1)

Enables 2D barcode decode with any Janam mobile computer  
[More Info](#)

## Expanded Performance



**Holster**  
(HL-G-001)

Keep the XG100 at the ready while performing other tasks

## Spare and Replacement Items



**Stylus 5-pack**  
(ST-XP-5)



**Stylus Tether 5-pack**  
(SS-J5-001)

Minimize occurrence of a dropped or misplaced stylus



**Handstrap 5-pack**  
(HS-G5-001)

Includes a stylus sleeve

# Accessories for XM and XP Series

With easy management of your handheld accessories in mind, Janam developed an efficient tool set to work with all XM and XP Series mobile computers.

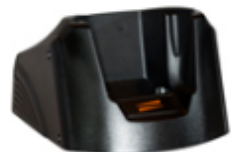
## Cradle Kits



**Single-Slot USB/Serial Cradle Kit**  
(CKT-P1-001U AND CKT-P1-002U)

With built-in serial and USB communications capability plus room to charge a spare battery

---



**Single-Slot Modem Cradle Kit**  
(CKT-P1-001M AND CKT-P1-002M)

Connect remotely to a host PC using a dial-up phone line (also features charging-well for spare battery)

---



**Four-Slot Cradle Kit**  
(CKT-P4-001U AND CKT-P4-002U)

Charge and sync four devices

## Cables



### **Power Supply for Syncing/Charging Cables** (AC-XP-1)

Power supply for either USB or Serial Syncing/Charging Cable (includes international adapter set)

---



### **O'Neil Printer Cable** (CAB-ON1-1)

For use with Molex Cable Cup Assembly (CC-P-001X or CC-P-002X)

---



### **Zebra Printer Cable for QL Series** (CAB-ZB1-1)

For use with Molex Cable Cup Assembly (CC-P-001X or CC-P-002X)

---



### **Zebra Printer Cable for RW Series** (CAB-ZB2-1)

For use with Molex Cable Cup Assembly (CC-P-001X or CC-P-002X)

---



### **DEX Cable** (CAB-DX1-1)

For use with Molex Cable Cup Assembly (CC-P-001X or CC-P-002X)

---

## Batteries/Chargers



**Standard Battery**  
(BAT-P1-001)

2400mAh 3.7v



**Extended Battery Kit**  
(BK-XP-1)

Includes 4000mAh 3.7V battery and cover



**Extended Battery**  
(BA-XP-2)

4000mAh 3.7V. Important ? purchase Extended Battery Kit (BK-XP-1) before ordering spare extended batteries



**Six-Bay Battery Charging Kit**  
(BK-P6-001)

Compact, low profile battery charging kit that charges up to six Janam batteries (BA-XP-1 and BA-XP-2) Includes charging base, power supply and line cord (batteries not included)

## 2D Scanning Firmware



**2D Decode Firmware Upgrade**  
(2D-XP-1)

Enables 2D barcode decode with any Janam mobile computer  
[More Info](#)

## Expanded Performance



**RFID Reader**  
(ATC-RF1-1)

Attachable accessory extends the data capture capabilities of Janam's rugged PDA-style devices ISO14443 compliant and supports Mifare 1K, Mifare 4K and Mifare UltraLight tags

---



**Magnetic Stripe Reader**  
(MSR-XP-1)

Magnetic Stripe Reader delivers on-the-go card reading capability

---



**USB Cable Cup Assembly**  
(CC-P-001U AND CC-P-002U)

Attachable accessory for USB-based connectivity

---



**USB Host Cable Cup Assembly**  
(CC-P-002UH)

Attachable accessory to connect USB cable with XM Series or XP30 devices

---



**Serial Cable Cup Assembly**  
(CC-P-001S AND CC-P-002S)

Attachable accessory for serial-based connectivity

---





**Molex Cable Cup Assembly**  
(CC-P-001X AND CC-P-002X)

Attachable accessory for secure Molex-based cable connectivity

---



**Vehicle Charging Adapter**  
(VA-XP-1)

A convenient way to charge Janam's handhelds while on the go and a great back-up charging method for extended shifts (Use with separately orderable Cable Cup Accessory or RFID Reader)

---



**Nylon Operating Case with Clear Front**  
(HL-P-001)

A protective case for extra tough environments

---



**Nylon Holster with Rugged Clip**  
(HL-P-002)

Use this holster to secure a Janam PDA-style mobile computer to a belt

---



**Retractable Locking Tether with Shoulder Strap**  
(RT-J-002)

For use with Nylon Operating Cases (HL-P-001 or HL-P-003)

## Spare and Replacement Items



**Stylus Tether 5-pack**  
(SS-XP-5)

Connecting cord for attaching a stylus to the handheld; Minimizes occurrence of a dropped or misplaced stylus

---



**Power Supply for Single-Slot Cradle**  
(PS-XP-1S)



**Power Supply for Four-Slot Cradle**  
(PS-XP-4)



**Handstrap**  
(HS-P-001)

For added user comfort and convenience

---



**Stylus 5-pack**  
(ST-XP-5)



[www.L-TronDirect.com](http://www.L-TronDirect.com)

800-830-9523

[info@L-Tron.com](mailto:info@L-Tron.com)

596 Fishers Station Dr | Victor, NY | 14564 | Suite 1 A

[www.L-Tron.com](http://www.L-Tron.com)

Get in touch with us  
on social media!

