

# Version 3.2



# ITScript Net®

## Program Developer & Communication Software for Mobile Data Collection Devices

### Development Environment

#### Program Design

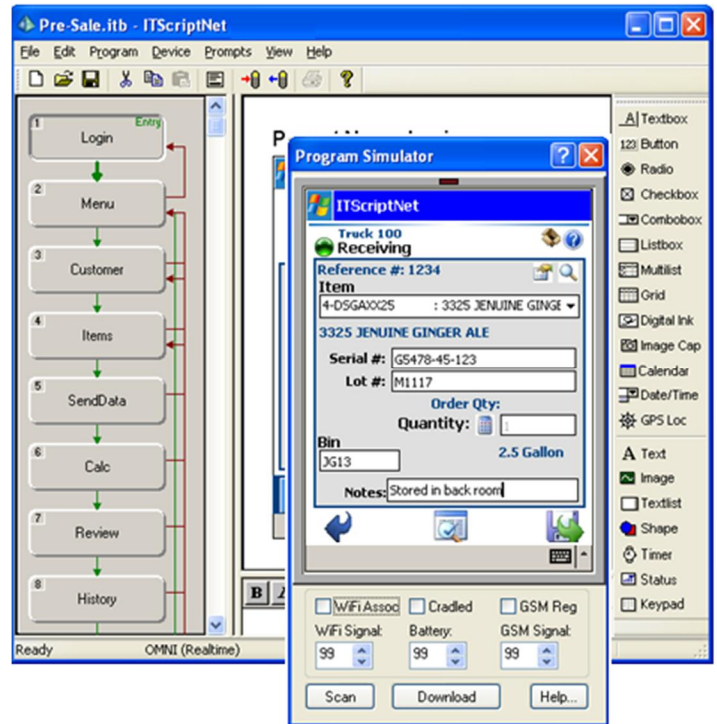
- Input controls - textbox, radio button, checkbox, combobox, data grid, digital ink, image capture, calendar & time/date picker, GPS coordinates
- Design enhancement features . use images, shapes, colors, fonts, buttons, status indicators for:
  - Battery Life
  - GSM Signal Strength
  - Progress bar
  - Wi-Fi association status
  - Free Space
  - Numlock state
  - Shift state
  - Wi-Fi Signal Strength
- Customize program behavior with scripts using a rich set of over 200 functions that simplify development
- Generate defined validation files from an ODBC data source to validate input
- Print to a Bluetooth®, 802.11b, IrDA or serial printer.

#### Data Output to:

- Text files
- Access database
- Excel® spreadsheet
- Any ODBC data source

#### Data Processing Scripts

Write VBScripts to perform additional processes on the data as it is being transferred to the server. Kick off other processes, like displaying a report, printing a document, send an email, send data to a shared site (FTP), and calling COM and .Net components. These scripts provide near limitless capabilities within ITScriptNet.



### Communication

#### Connection Methods

##### Batch

Connect to local PC with a cradle or cable using ActiveSync

##### Wireless

Local Area Network - WLAN . Wi-Fi - 802.11b/g  
Wide Area Network . WWAN - GPRS/GSM (cell phone)

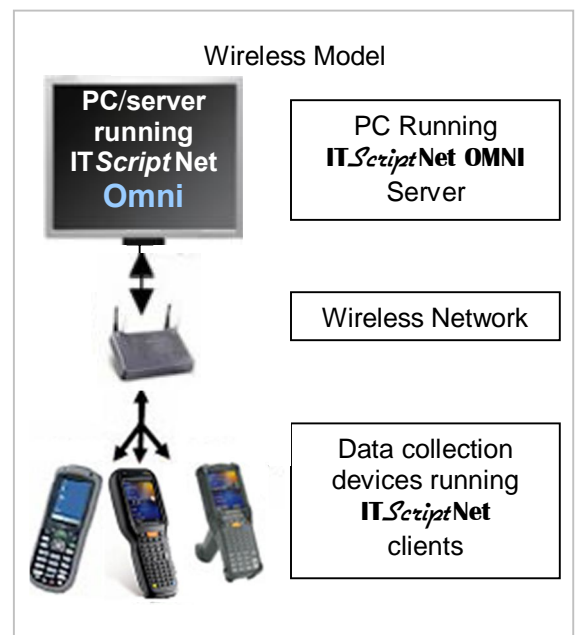
#### Data Transfer Methods

##### Batch

- Through the menus on the device and PC
- AutoDownload . place the device in the cradle, data is sent automatically. Program and validation files can be automatically reloaded.
- DL Server . manually control transfer with buttons in the data collection program

##### Wireless

- Manual . control when collected data is sent to the server with controls and functions, both batch and wireless.
- RF . Make a wireless connection to send the data. If the connection fails, either retry the connection or exit the program.
- Hybrid . If a wireless connection is not made, saves the data to the device for later transmission.



# Features



## ITScriptNet Design Features

- **VOICE!** Integration with Vanguard Voice's AccuSPEECH Studio for Voice Enabling data collection
- **SQL CE!** Use the benefit of a database
- **Rotate!** Rotation of images, signature capture, and text
- **GPS!** Capture GPS coordinates and GPS breadcrumb trail\*
- **RFID!** Scan RFID tags#
- **CSV File!** Lookup data from a csv file
- Write VBScripts for additional processing; send data to multiple output formats, send email, print reports, run other logic
- Password protect the program
- Lock user into data collection only\*
- Capture signatures (sign on glass)
- Take pictures\*
- Play .wav files, Beep and Buzz\*
- AutoTransfer data when device is cradle
- Unlimited number of screens and fields
- **New Features!** New elements for: calendar, date/time picker, keypad & keypad image buttons, battery status, media clip, and more.
- **Color Gradient!** Visual enhancement for buttons & shapes
- **Filters & Formatting!** Multiple filters and automatic formatting for grids, listboxes, drop-down boxes.
- **Over 30 New Functions!**
- Simulate program operation on the PC
- Output to Excel, Access, text files or ODBC source
- Display collected data in a grid
- Edit and delete collected data
- Checkboxes and radio buttons
- Scan & parse 2D codes\*
- Design programs to run on the PC Fully test the design, operation and data transfer from device while still in demo mode
- Completely control the validation and flow of the program

## Real-time features - available with Omni communication licensing:

- Send a file from the device to the server
- Store data on device until wireless connection is made (Store & Forward)
- Retrieve a file from the server
- Execute a VBScript remotely on the server
- Execute a SQL statement remotely on the server
- Load ITScriptNet programs from the server
- Connect via 802.11b/g\*
- Connect via GSM/GPRS (cell phone)\*
- Connect via modem
- Connect to server over the internet via local ActiveSync PC connection
- Control timing of sending data to server
- And more!

## Below is a small sampling of common applications where **ITScriptNet** has been used:

- Asset Tracking
- Check In/Out
- Disaster site personnel mgmt
- Food Safety Audit
- Inspections
- Inventory Control
- Package Delivery
- Pallet Tracking
- Physical Inventory
- Quality Control
- Route Accounting
- Shipping/Receiving
- Showroom Order Entry
- Time & Attendance

\* With properly equipped device

# Supported devices only



**Z-SPACE**  
TECHNOLOGIES, INC.  
[www.z-space.com](http://www.z-space.com)

© 2010 Z-Space Technologies, Inc. All rights reserved.



[www.L-TronDirect.com](http://www.L-TronDirect.com)

800-830-9523

[info@L-Tron.com](mailto:info@L-Tron.com)

596 Fishers Station Dr | Victor, NY | 14564 | Suite 1 A

[www.L-Tron.com](http://www.L-Tron.com)

