



Vehicle mounted terminal

**DATALOGIC**™



Mobile Computers

## General Description

Rhino-NET™ is the Datalogic vehicle mounted RF terminal of the mobile@work™ family with WindowsCE.Net technology.

Designed for all operating conditions, Rhino-NET™ is capable of working in sub-zero environments, enabling the terminal to perform at temperatures as low as -30°C. Providing a superior protection class (IP65) and an intuitive use of the constantly illuminated keyboard, Rhino-NET™ is the most flexible solution for vehicle applications in extremely harsh environments. Thanks to its particular mounting bracket, Rhino-NET™ is also immune to vibrations and mechanical shocks.

Communication is extremely flexible: Datalogic supplies RF WLAN technology, compliant with the IEEE 802.11b/g (Wi-Fi) standard, enabling businesses to employ the latest standards. Rhino-NET™ is equipped with two standard type III PCMCIA slots that allow support of the Radio Ready concept.

Integration management to the legacy systems takes advantage of the new software product line that includes terminal emulation connectivity for IBM5250/3270 and VT100/220 through DL TCL™-NET.

In addition, Rhino-NET™ can be used in combination with the Dragon™ laser gun to allow bar code data entry, in both directly powered cable and cordless versions.

All Rhino-NET™'s features can be easily configured through the Remote Display Control Application.

Flexibility in wireless communication, a progressive operating system and an impressive feature list make the durable Rhino-NET™ an essential and reliable tool for today's challenging warehouse management environment.

## Features

- > Windows CE 4.2.Net Operating System
- > Wide 1/2 VGA color display
- > WLAN 802.11b/g (Wi-Fi) Standard
- > WPAN 802.15
- > IP65 sealed and 25g shock tested
- > Full range operating temperature -30° to 50° C
- > Internal (11-75 VDC) power supply
- > Constantly illuminated keyboard with separate numeric keypad
- > Cordless bar code scanning support
- > Terminal emulation for IBM5250/3270 and VT100/220 with DL TCL™-NET

## Applications

- > Warehouse management
- > Cold storage and harsh outdoor applications
- > Manufacturing environments

## Specifications

### PHYSICAL CHARACTERISTICS

DIMENSIONS	320 x 250 x 90 mm (H x W x D)
WEIGHT	3.5 Kg. approx. (excluding mounting bracket)
DISPLAY	1/2 VGA display, color TFT
KEYBOARD	57-key alphanumeric keyboard with constant illumination and audible key beep; Universal ABCD layout to include IBM5250/3270 and VT100/220 functions
OPERATING TEMPERATURE	-30° to 50°C
STORAGE TEMPERATURE	-30° to 70°C
ENVIRONMENTAL SEALING	IP65
SHOCK	25g peak pulse, duration 6 ms, 1000 impulses on each axis
RANDOM VIBRATION	3g RMS, 5Hz to 1000 Hz, 60 min duration on each axis
POWER MANAGEMENT	Internal wide range power supply (11 to 75 VDC); Transient spike and overcurrent/voltage protected
POWER SUPPLY	Reverse polarity protected; connects directly to vehicle battery
BACK-UP	Lithium battery for memory support when main power supply is down
CONTROL SWITCHES	Power ON/OFF, contrast, backlight, alphanumeric toggle
STATUS INDICATOR LIGHTS	Power and caps lock
PC-CARD SLOTS	2 PCMCIA type III
INTERFACES	2 RS232-C serial interfaces; COM2 with power supply option for bar code readers

### PERFORMANCE

OPERATING SYSTEM	WINDOWS CE 4.2 .NET
MICROPROCESSOR	INTEL® XSCALE @ 400 MHZ
SYSTEM RAM MEMORY	64 MB
SYSTEM FLASH MEMORY	32 MB
REAL TIME CLOCK	Time and date stamping under software control

### WIRELESS DATA COMMUNICATION

LOCAL AREA NETWORK	IEEE 802.11b/g (Wi-Fi) Antenna: Internal (integrated in PCMCIA card) Frequency range: Country dependent, typically 2.4 - 2.5 GHz
PERSONAL AREA NETWORK	Integrated antenna

### PERIPHERALS

TETHERED SCANNER	Dragon™ Desk
CORDLESS SCANNER	Dragon™ Mobile with STAR-Modem™ or DL cordless card
FIXED POSITION SCANNER	DS6400: Tethered or with STAR-Modem™ or DL cordless card

### ACCESSORIES

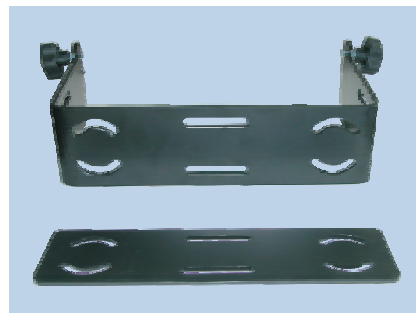
MOUNTING BRACKETS	Included in the package
POWER CABLE	Included in the package
SERIAL CABLE	Included in the package (for local communication with PC)
SERIAL MOUSE	Can be ordered separately



Dragon/DL Cordless Card/STAR-Modem™



DS6400



Mounting Kit



[www.L-TronDirect.com](http://www.L-TronDirect.com)

800-830-9523

[info@L-Tron.com](mailto:info@L-Tron.com)

596 Fishers Station Dr | Victor, NY | 14564 | Suite 1 A

[www.L-Tron.com](http://www.L-Tron.com)

Get in touch with us  
on social media!

