

F780 Series

A Ruggedized, High Performance Bar Code Linear Imager
for Industry and General Purpose Applications

Ruggedized over-mold design to withstand multiple drops to concrete from 2.0 meter

GS1 DataBar, PDF, MicroPDF and composite code support

Outstanding reading capability on 3 mil barcode with more than 3" depth of field

Up to 34" reading range on general barcodes

Unsurpassed readability on low contrast, smudged, poorly-printed or damaged barcodes

Superior motion tolerance for rapid and accurate data-capture on the move

High speed scanning rate up to 500 scans per second for snappy barcode capture

All-in-one host interface design, including USB HID, USB COM, PS/2 keyboard wedge and RS232

Automatically switch between presentation scanning and hand-held scanning while working with Cino SmartStand

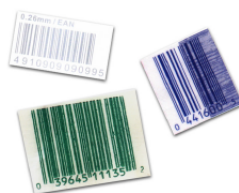
Optional vibrator for noisy working environment



Thanks to the revolutionary FuzzyScan 3.0 Imaging Technology and ruggedized construction, the new FuzzyScan F780 bar code linear imager from Cino impresses the user with high scanning performance and exceptional reliability. The F780 series is the best-of-breed blend of form and functionality to meet the need of industry and general purpose applications.

Compact yet ruggedized construction

To deliver the highest level of dependability, the F780 is built with compact and robust over-mold housing. It is rugged enough to withstand multiple drops from 2.0 meter to concrete to meet your day-to-day scan-intensive use.



Outstanding reading performance

With FuzzyScan 3.0 Technology, the F780 provides outstanding performance on reading damaged, smudged, poorly-printed and low contrast barcode labels that are commonly found in the real world quickly and accurately.

Latest linear-stacked barcodes support

To meet the latest application requirement, the F788 supports most popular linear-stacked barcodes, including PDF, MicroPDF, Codablock, GS1 Databar Linear-stacked and Composite.



Specifications

Performance Characteristics

Optical System	High performance Linear Imaging Engine
Print Contrast	15% minimum reflective difference
Minimum Resolution	Typical 3 mil (Code 39, PCS 0.9)
Working Distance *1	Up to 24 inches on 100% UPC/EAN symbols Up to 34 inches on 20 mil Code 39
Light Source	630nm visible red LED
Scan Rate	Dynamic scanning rate up to 500 scans per second
Reading Direction	Bi-directional (forward and backward)
Pitch/Skew	± 65° / ± 65°
Operating Modes	Toggle, Trigger, Force, Level, Flash, Diagnostic Alternative, Low power, Presentation
Host Interfaces	PC/AT, PS/2 (DOS V) keyboard wedge PC/AT, PS/2 (DOS V) keyboard direct link TTL RS232 serial USB HID (USB Keyboard) USB COM port emulation Laser emulation and Wand emulation
Configuration Setup	Bar code command Windows utility - FuzzyScan PowerTool
Data Editing	Condensed DataWizard via bar code command Full-feature DataWizard via FuzzyScan PowerTool
User Interfaces	3 LEDs for power, good read and status indications Programmable beeper Optional vibrator

Supported Symbolologies

1D Linear (F780)	Code 39, Code 39 Full ASCII, Code 32, Code 39 Trioptic Code 128, GS1-128, Codabar, Code 11, Code 93 Standard & Industrial 2 of 5, Interleaved & Matrix 2 of 5 German Postal Code, China Postal Code, IATA UPC/EAN/JAN, UPC/EAN/JAN with Addendum Telepen, MSI/Plessey & UK/Plessey GS1 DataBar (formerly RSS) Linear, Linear-stacked
Linear-stacked (F788)	PDF417, Micro PDF417, Codablock, Composite

User Environment

Drop Specifications	Withstand 50 drops at 6.0ft / 1.8m to concrete Withstand 10 drops at 6.6ft / 2.0m to concrete
Environmental Sealing	IP41
Operating Temperature	-10°C to 50°C (14°F to 122°F)
Storage Temperature	-40°C to 70°C (-40°F to 158°F)
Humidity	5% to 95% related humidity, non-condensing
Ambient Light Immunity	0 ~ 100,000 lux
ESD Protection	Functional after 15kV discharge

1. The reading distances are measured under Cino's test environmental condition.
2. Don't stare into the LED beam.

Physical Characteristics

Dimension	97.8 mm (L) x 70.5 mm (W) x 156.2 mm (D) 3.85 in. (L) x 2.77 in. (W) x 6.15 in. (D)
Weight	157g (cable excluded)
Color	Light Gray or Black
Input Voltage	5VDC ± 10%
Current	Operating : Typical 180 mA @5VDC Standby : Typical 80 mA @5VDC

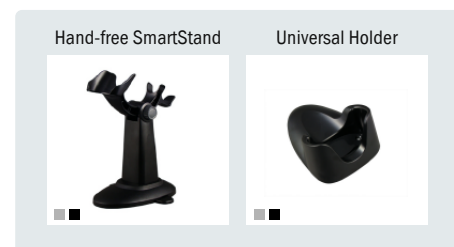
Safety & Regulatory

EMC	CE, FCC, BSMI, C-Tick, KC, VCCI
Safety *2	LED Eye Safety IEC62471, Exempt Group
Environmental	Compliant with RoHS directive

Accessories

Cables	PS/2 (DOS V) Keyboard Wedge Cable RS232 Serial Cable USB Cable USB Power Steal Cable
Others	Hand-free SmartStand Universal Holder

Accessories



Colors Available : ■ black ■ light gray



www.L-TronDirect.com

800-830-9523

info@L-Tron.com

596 Fishers Station Dr | Victor, NY | 14564 | Suite 1 A

www.L-Tron.com

Get in touch with us
on social media!

