



# Recommended Packages



## Easy to Order and Easy to Install



### Passenger Side Mounting Systems

(PKG-PSM-200 Series shown with additional options)

### Console Mounting Systems

(PKG-CON-115 shown with additional options)



# Passenger Side Mounting Systems

Havis has equipment mounting packages for the most popular vehicle applications. By bundling all of the necessary parts in one SKU we simplify the ordering process.

These packages work in conjunction with our Tablet & Laptop Docking Stations and Universal Cradles to create the safest and most comfortable mobile workstations in the industry.

\*Packages are complete. Must order as-is. No substitutions.

Easy to order, Easy to Install.

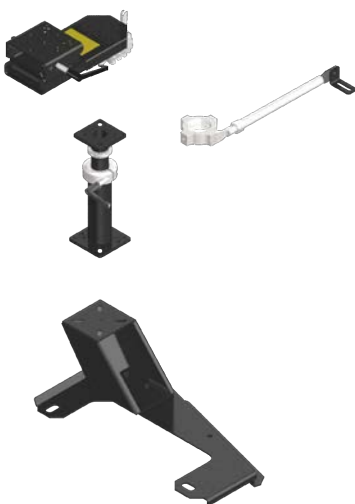
## Standard Packages (PKG-PSM-100)



Standard PKG-PSM's include a vehicle specific base plate, heavy-duty pole without height adjust handle, tilt-swivel motion device, and a top offset plate.

- Vehicle Specific Mounting Bases mount to existing OEM seat bolts for easy installation
- Heavy Duty Poles without height adjustable handle include collar only to set fixed height at installation (not user height adjustable)
- Tilt/Swivel motion devices enable 180° horizontal rotation for laptops and docking stations. Used to mount keyboards, laptop mounting plates, docking stations and more to the poles
- Top offset plates allow for strong and comfortable positioning of computer equipment
- See back page for the vehicles Standard Packages are available for.

## Premium Packages (PKG-PSM-200)



Premium PKG-PSM's include a vehicle specific base plate, heavy-duty pole with height adjust handle, swing arm motion device with tilt-swivel, and stability support arm.

- Vehicle Specific Mounting Bases mount to existing OEM seat bolts for easy installation
- Height adjustable poles bolt to the vehicle specific base. Precision machined parts eliminate metal-to-metal contact and allow for smooth movement during height adjustment
- Swing arms with motion adapters are ideal for computer usage from both the driver and front passenger seats. Their ruggedized design protects occupants and equipment in quick maneuvers and crash situations
- Stability support arms add upper pole support for premium top level stability and are highly recommended for all HDM applications
- See back page for the vehicles Premium Packages are available for.

# Console Mounting Systems

Console Mounting System Packages (PKG-CON) include various products that create the best equipment mounting solution for your mobile office. Filler plates and equipment brackets still need to be identified when ordering.

These packages can work in conjunction with our Docking Stations and Universal Cradles to create the safest and most comfortable mobile workstations in the industry.

\*Packages are complete. Must order as-is. No substitutions.

## PKG-CON-111



### 1995-2011 Ford Crown Victoria Package includes:

- 18" Horizontal Console (C-1800)
- Vehicle Specific Mounting Bracket Kit (C-M-1)
- Internal Mount Cupholder (C-CUP2-I)
- Height Adjustable Armrest (C-ARM-101)

## PKG-CON-112



### 1995-2011 Ford Crown Victoria Package includes:

- 8" Wide Vehicle Specific Tunnel Mount (C-TMW-CV-01)
- 12" Enclosed Heavy Duty 25° Angled Console (C-SM-1225)
- 8" Enclosed Low Profile Heavy Duty Console (C-SM-800)
- Internal Mount Cupholder (C-CUP2-I)
- Flip-up Armrest (C-ARM-104)

## PKG-CON-114



### 2010-2013 Chevrolet Tahoe Package includes:

- 8" Wide Vehicle Specific Tunnel Mount (C-TMW-GMC-02)
- 12" Enclosed Heavy Duty 25° Angled Console (C-SM-1225)
- Dual External Cupholder (C-CUP2-E-C)
- Flip-up Armrest (C-ARM-104)

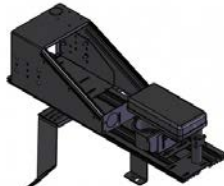
## PKG-CON-116



### 2006-2010 Ford Explorer Package includes:

- 16" Vehicle Specific Console (C-VS-1600-EXPL)
- Height Adjustable Flip-up Armrest (C-ARM-103)

## PKG-CON-121



### 2007-2015 Ford Expedition Package includes:

- 8" wide vehicle specific tunnel mount (C-TMW-EXPD-02)
- 12" enclosed heavy duty 25° Angled console (C-SM-1225)
- Dual External Cupholder (C-CUP2-E-C)
- Flip-up Armrest (C-ARM-104)

## PKG-CON-122



### 2009-2013 Ford F-150 Package includes:

- 8" wide vehicle specific tunnel mount (C-TMW-F150-02)
- 12" Enclosed Heavy Duty 25° Angled Console (C-SM-1225)
- Dual External Cupholder (C-CUP2-E-C)
- Flip-up Armrest (C-ARM-104)

# How to Order

## Package Part Numbers

Havis has equipment mounting packages for the most popular vehicle applications. By bundling all of the necessary parts in one SKU we simplify the ordering process. Packages are complete. Must order as-is. No substitutions.

### Passenger Side Mounting Systems

Make & Model	Years	Standard Part Number	Premium Part Number
<b>Chevrolet/GMC</b>			
Caprice	2011-2013	PKG-PSM-154	PKG-PSM-254
	2014-2015	PKG-PSM-175	PKG-PSM-275
G-Series Van	1997-2008	PKG-PSM-107	PKG-PSM-207
	1997-2015	PKG-PSM-139*	PKG-PSM-239*
Impala	2006-2013	PKG-PSM-103	PKG-PSM-203
Tahoe / Yukon	2000-2014	PKG-PSM-102	PKG-PSM-202
Trailblazer	2003-2009	PKG-PSM-125	PKG-PSM-225
<b>DaimlerChrysler</b>			
Caravan, Town & Country	2011-2014	PKG-PSM-146	PKG-PSM-246
Charger	2011-2014	PKG-PSM-168	PKG-PSM-268
Dakota	2005-2011	PKG-PSM-120	PKG-PSM-220
Durango	2011-2014	PKG-PSM-145	PKG-PSM-245
Ram Pick Up	2003-2014	PKG-PSM-111	PKG-PSM-211
<b>Ford</b>			
Crown Victoria	1995-2011	PKG-PSM-101	PKG-PSM-201
Interceptor (Sedan)	2013-2015	PKG-PSM-141	PKG-PSM-241
Interceptor (Utility)	2013-2015	PKG-PSM-153	PKG-PSM-253
E-Series Van	1997-2014	PKG-PSM-106	PKG-PSM-206

\*This model mounts to the front (forward seat bolts) of the passenger seat

Make & Model	Years	Standard Part Number	Premium Part Number
<b>Ford (continued)</b>			
E-Series Van	1997-2014	PKG-PSM-140*	PKG-PSM-240*
Edge	2006-2010	PKG-PSM-132	PKG-PSM-232
Escape	2001-2012	PKG-PSM-123	PKG-PSM-223
	2013	PKG-PSM-162	PKG-PSM-262
Expedition	1997-2015	PKG-PSM-109	PKG-PSM-209
	2010	PKG-PSM-137	PKG-PSM-237
Explorer (Retail)	2011-2013	PKG-PSM-153	PKG-PSM-253
	2004-2014	PKG-PSM-108	PKG-PSM-208
F-150 Pick Up	2011	PKG-PSM-142	PKG-PSM-242
Focus	2011-2013	PKG-PSM-160	PKG-PSM-260
Fusion	2013-2014	PKG-PSM-163	PKG-PSM-263
Ranger	1997-2012	PKG-PSM-115	PKG-PSM-225
Taurus	2008-2009	PKG-PSM-119	PKG-PSM-219
<b>Jeep</b>			
Liberty	2002-2012	PKG-PSM-127	PKG-PSM-227
<b>Nissan</b>			
Altima	2007-2012	PKG-PSM-116	PKG-PSM-216
<b>Toyota</b>			
Camry	2005-2009	PKG-PSM-117	PKG-PSM-217
Prius	2004-2009	PKG-PSM-129	PKG-PSM-229

### Console Mounting Systems

Make & Model	Years	Package Part Number	Console Type
<b>Chevrolet</b>			
Impala	2006-2013	PKG-CON-115	Vehicle Specific
Tahoe	2010 - 2013	PKG-CON-114	Horizontal
<b>Dodge</b>			
Charger	2008-2010	PKG-CON-113	Vehicle Specific

Make & Model	Years	Package Part Number	Console Type
<b>Ford</b>			
Crown Victoria	1995-2011	PKG-CON-111	Horizontal
Crown Victoria	1995-2011	PKG-CON-112	Angled
Expedition	2007-2015	PKG-CON-121	Angled
Explorer	2006-2010	PKG-CON-116	Vehicle Specific
F-150	2009-2013	PKG-CON-122	Angled

### Options & Accessories

Tablet & Laptop docking, keyboards & mounts, printer & peripheral mounts, arm rests, map lights and many other accessories are available.

[www.havis.com](http://www.havis.com)



[www.L-TronDirect.com](http://www.L-TronDirect.com)

800-830-9523

[info@L-Tron.com](mailto:info@L-Tron.com)

596 Fishers Station Dr | Victor, NY | 14564 | Suite 1 A

[www.L-Tron.com](http://www.L-Tron.com)

Get in touch with us  
on social media!

