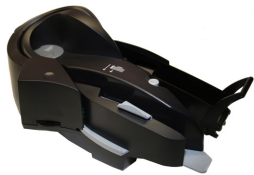




Check Capture Devices



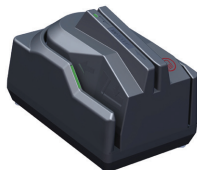
Excella STX
Dual-sided scanner with front side franking and rear side endorsement printer and integrated secure card reader authenticator



Excella
High-volume, dual-sided scanner with rear side endorsement printer



ImageSafe
Dual-sided scanner with integrated secure card reader authenticator



MICR Safe
Encrypting check scanner
Single-sided scanner with integrated secure card reader authenticator



Mini MICR
Single-sided scanner with magstripe card reader



MICRImage
Single-sided scanner with magstripe card reader

Check Scanners

Small Document Scanners: MICR and Magstripe data

Retailers rely on MagTek. Millions of check transactions every day are processed with MagTek check readers and scanners. For some of the industry's biggest retailers to the smallest mom and pop shops, MagTek check readers and scanners deliver flexibility, accuracy and value. With solutions for both auto-and single-feed operation and advanced features including integrated, secure card reader authenticators and color scanning, MagTek check readers and scanners fit the needs of a wide range of check transaction applications. For check processing that's easy and secure, put your trust in MagTek.

TESTIMONIAL

"We have worked with several brands of scanners over the years and found that MagTek is the best. The MagTek scanners are well designed, durable and reliable. Their developer tools, such as their API's that control the scanner, make it easy to integrate into our software application. I highly recommend MagTek."

- Jeff Hardy, CEO, TOPS Software LLC. Product: Excella STX

Call a representative to learn more
562-546-6400

Encrypting MICR with SCRA

MICRSafe

Optimized to reduce transaction time and manual entry errors, the MICRSafe is a single-feed MICR reader with a reliable and durable design. Ideal for retail applications where fast and accurate MICR reading is required, the MICRSafe offers a range of interface options, including connectivity to the most popular POS terminals. With a simple drop-and-push check feed movement, the MICRSafe significantly speeds check verification and conversion.

ENHANCED USER EXPERIENCE

The MICRSafe enables retailers to easily format the MICR data to match any application input requirements. In a single pass, the MICRSafe reads E13B and CMC7 MICR fonts and connects to POS terminals through RS-232 AUX interface to output data to POS.

Designed for multi-use retail environments, the MICRSafe also offers an integrated 3-track MagneSafe™ secure card reader authenticator to read ISO and AAMVA standard credit and debit cards and ID cards. This highly dependable device will deliver superior performance throughout years of daily use.

SECURITY

In a single pass, this encrypting check scanner encrypts the magnetic MICR data and verifies the magnetic composition.

MagTek secure card reader authenticators (SCRAs) use the MagneSafe™ Security Architecture (MSA). The MSA has evolved exponentially from its inception in 2006 when it delivered the industry's first SCRAs for secure electronic transactions. The MSA is a digital identification and authentication architecture that safeguards personal data. Designed to exceed PCI regulations, MSA leverages strong encryption, secure tokenization, counterfeit detection, tamper recognition, data relevance and integrity, and dynamic digital transaction signatures, which together validate and protect the entire transaction and each of its components.

A key feature of the MSA is MagnePrint card authentication, a patented, proven technology which reliably identifies counterfeit credit cards, debit cards, gift cards, ATM cards and ID cards at the point of swipe, before fraud occurs. MSA's multi-layer security provides unmatched protection and flexibility for safer online transactions.

Conventional MICRs with SCRA

ImageSafe

The multi-purpose ImageSafe is a compact check reader and dual-sided scanner that offers a cost-effective alternative to implement PC-based electronic check applications. Ideal for use with Check 21, BOC, and remote deposit capture applications, ImageSafe also enables secure card-based payment transactions with its integrated MagneSafe™ secure card reader authenticator that encrypts card data at the point of swipe. The flexible device can also be used with an ID card for strong two-factor authentication during online financial transactions.

The ImageSafe is a full-featured device in a compact footprint. It enables the double-sided capture of complete check images in a single pass and supports E13B and CMC7 fonts. Using the MagneSafe secure card reader authenticator, users can easily secure credit, debit and gift card transactions in addition to capturing check images. ImageSafe connects to PCs and terminals through USB 2.0 or 1.1 interfaces and features an easy-to-read LED indicator for visibility into device status. It's everything retailers need in a secure transaction device, and more.

Excella STX

Excella STX is check reading made easy. For merchants and financial institutions that need an affordable method for rapid image capture at the earliest entry point when processing BOC, Check 21 and remote deposit capture transactions. The Excella STX leads the industry in reliability and ease-of-use. Featuring a front and back printer for franking and endorsing, Excella STX scans front and back images in a quick, single pass. The small footprint unit also offers single-side scanning for standard ID cards and offers an optional color scanning feature.

The full-featured Excella STX is a single-feed check reader and scanner designed to meet the dynamic requirements of many retail and financial applications. The duplex reader offers MICR reading for E13B and CMC7 fonts and connects to standard PCs and terminals through a USB or Ethernet 100Base-T interface. The unit also features easy access to check path and scan bars to simplify maintenance and cleaning. With an integrated MagneSafe™ secure card reader authenticator; this device may be everything your application needs for secure payment processing.

Excella

Excella is the ideal desktop check reading device for early-image capture in high-volume electronic check applications, including BOC, Check 21 and remote deposit capture. With a small footprint and striking modern design, Excella is an auto-feed check reader which captures both the front and back image of checks in a single pass at 45+ DPM. The automatic feeder has a capacity of up to 70 documents to easily support even the most active check processing applications.

When high performance check processing is an integral part of your application, Excella delivers both the speed and efficiency you need. The Excella reads both E13B and CMC7 MICR fonts and features a programmable endorsement message. Excella captures check images at a 200 dpi resolution and offers CCITT G4 or JPEG image compression to optimize your applications' storage use. The easy-maintenance, high-speed unit is API and protocol compatible with MagTek's Excella STX single-feed scanner for optimum application flexibility.

Conventional MICR and MSR MICRImage™

Designed to interface with PC applications and the most popular POS terminals in the market, the MICRImage is the ideal solution for retail Check Conversion and ACH applications where both size and ease-of-use are critical factors. With a small footprint and an advanced ergonomic design, the MICRImage delivers the accuracy and compatibility retailers of all sizes require for electronic check transactions. Reading MICR data and scanning a check's front image in a single pass, MICRImage can store up to 100 black and white check images using standard CCITT or G4 compression.

MICRImage provides the highest MICR read accuracy available to ensure successful electronic check transactions. The efficient device combines design, function and value to provide the best solution for electronic check conversion. The ergonomic design features visual indicators for ease of use and rapid training while multiple interface ports ensure simple connectivity. The MICRImage is the ideal check reader and scanner for electronic check applications of all types including NACHA's POP, ARC and RCK.

Mini MICR

Optimized to reduce transaction time and manual entry errors, the Mini MICR is a single-feed MICR reader with a reliable and durable design. Ideal for retail applications where fast and accurate MICR reading is required, the Mini MICR offers a range of interfaces options, including connectivity to the most popular POS terminals. With a simple drop-and-push check feed movement, the Mini MICR significantly speeds check verification and conversion.

The Mini MICR enables users to easily format the MICR data to match any application input requirements. In a single pass, the Mini MICR reads E13B and CMC7 MICR fonts and connects to POS terminals through a USB, RS-232 or PC keyboard wedge interface. Designed for multi-use environments, the Mini MICR also offers an optional 3-track magnetic stripe reader to read ISO standard credit and debit cards and ID cards. This highly dependable device will deliver superior performance throughout years of daily use.

SECURE. RELIABLE.



Specifications

	Conventional MICR with SCRA			Encrypting MICR and SCRA	Conventional MICR and MSR	
	ImageSafe	Excella STX	Excella	MICRSafe	MICRImage	Mini MICR
IMAGING						
MICR ENCRYPTION	NO	NO	NO	YES	NO	NO
MAGSTRIPE READER	SCRA 3TK	SCRA 3TK	NO	SCRA 3TK	MSR 3TK	MSR 3TK
PRINTER	FRONT & BACK	FRONT & BACK	BACK ONLY	NO	NO	NO
SCANNER	DUAL SIDED	DUAL SIDED	DUAL SIDED	NO	SINGLE SIDED	NO
IMAGE RENDITION	TIFF 6.0 JFIF with EXIF tags BMP			NA	TIFF 6.0	NA
IMAGE COMPRESSION	CCITT G4 or JPEG			NA	CCITT G4	NA
IMAGE RESOLUTION	200 dpi; black/white and grayscale images	200 dpi; black/white and grayscale images; color optional	200 dpi; black/white and grayscale images	NA	200 dpi; black/white and grayscale images	NA
CHECK CAPACITY	SINGLE FEED	SINGLE FEED	70	SINGLE FEED	SINGLE FEED	SINGLE FEED
USES	Check 21; BOC; RDC					
SPECIFICATIONS						
MTFB						
ELECTRONICS	125,000 hrs			125,000 hrs		
CHECK READ HEAD	1 MILLION PASSES			1 MILLION PASSES		
MSR READ HEAD	1 MILLION PASSES			1 MILLION PASSES		
DOCUMENT SIZE	4"x 9" Maximum 3"x 2.625" Minimum	4"x 8.5" Maximum	4"x 8.5" Maximum		4"x 8.5" maximum	
MICR FONTS	E13-B and CMC-7	E13-B and CMC-7	E13-B and CMC-7	E13-B and CMC-7	E13-B and CMC-7	E13-B and CMC-7
INTERFACE	USB 2.0; USB 2.1	USB 2.0; Ethernet 100 Base-T	USB 2.0; Ethernet 100 Base-T	USB; USB KB	RS-232; Ethernet; Modem; USB	USB; RS232; PC KB wedge
CURRENT	300 mA; 1.5 A Max			600mA (Operating)		
VOLTAGE	12 VDC, 1.5 Amps	24 VDC, 2.5 Amps		12 VDC, 1.5 Amps	12 VDC, 1.5 Amps	12 VDC, 1.0 Amp
MECHANICAL						
DIMENSIONS	Height: 6.0 in Width: 3.9 in Length: 8.1 in	Height: 6.3 in Width: 6.3 in Length: 9.4 in	Height: 7 in Width: 7.5 in Length: 13.25 in	Height: 4.25 in Width: 4.0 in Length: 6.25 in	Height: 6 in Width: 3.9 in Length: 9 in	Height: 4.25 in Width: 4 in Length: 6 in
WEIGHT	2.2 lbs	4.3 lbs	3.59 lbs	3.0 lbs	2.5 lbs	3.0 lbs
ENVIRONMENTAL						
TEMPERATURE	Operating: 0°C to 50°C (32°F to 122°F) Storage: -30°C to 60°C (-22°F to 140°F)			Operating: 0°C to 50°C (32°F to 122°F) Storage: -30°C to 60°C (-22°F to 140°F)		
HUMIDITY	Operating: 10% to 90% noncondensing Storage: Up to 95% noncondensing			Operating: 10% to 90% noncondensing Storage: Up to 95% noncondensing		
ALTITUDE	Operating: 0 -10,000 ft (0 - 3,048m) Storage: 0 - 50,000 ft (0 - 15,240m)			Operating: 0 -10,000 ft (0 - 3,048m) Storage: 0 - 50,000 ft (0 - 15,240m)		





www.L-TronDirect.com

800-830-9523

info@L-Tron.com

596 Fishers Station Dr | Victor, NY | 14564 | Suite 1 A

www.L-Tron.com

Get in touch with us
on social media!

