

TSC

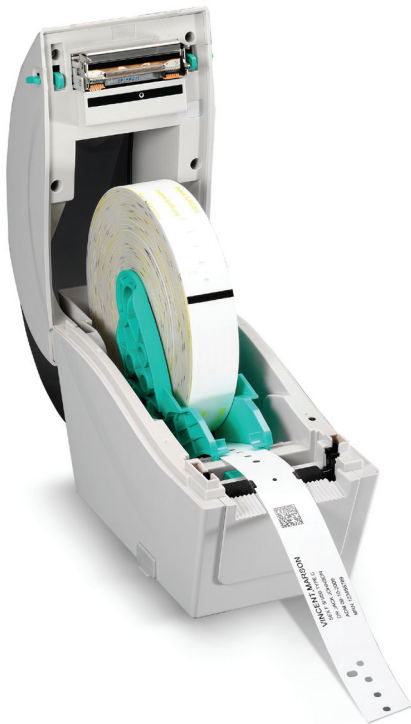
The Smarter Choice.

CELEBRATING 20 YEARS



TDP-225W – Desktop Direct Thermal Wristband Printer

EVERY FEATURE YOU NEED FOR MEDICAL AND ENTERTAINMENT WRISTBAND PRINTING



KEY FEATURES

- Designed to hold 6.5" OD wristbands
- Front LCD display
- High quality double-walled clamshell design
- Easy media loading
- Up to 127 mm (5") per second print speed
- microSD Flash memory expansion up to 4 GB
- Ethernet and USB 2.0 connectivity standard
- Optional peel-off module, cutter module and down-time keyboard interface

APPLICATIONS

- **Healthcare**
 - Patient ID Tracking
 - Hospital Admissions
 - Hospital Nursery
- **Entertainment & Hospitality**
 - Amusement Parks
 - Water Parks
 - Event Admissions
 - Night Club Age Verification
- **Other Markets**
 - Law Enforcement
 - Crowd Control
 - Animal ID
 - Restricted Area Access

TDP-225W – Desktop Direct Thermal Wristband Printer

PRINTER MODEL	TDP-225W
Resolution	8 dots/mm (203 DPI)
Printing method	Direct Thermal
Max. print speed	127 mm (5")/second
Max. print width	52 mm (2.05")
Max. print length	2,286 mm (90")
Enclosure	Clamshell design with wall mount hole at the bottom cover
Physical dimension	109 mm (W) x 210 mm (H) x 260 mm (D) 4.29" (W) x 8.27" (H) x 10.24" (D)
Weight	1.2 kg (2.65 lbs)
Label roll capacity	165 mm (6.5") OD
Processor	32-bit RISC CPU
Memory	<ul style="list-style-type: none"> • 4 MB Flash memory • 8 MB SDRAM • microSD card reader for Flash memory expansion, up to 4 GB
Interface	<ul style="list-style-type: none"> • USB 2.0 • Internal Ethernet, 10/100 Mbps • USB host, for scanner or PC keyboard (factory option)
Power	External universal switching power supply <ul style="list-style-type: none"> • Input: AC 100-240V, 1A, 47-63Hz • Output: DC 24V, 2.08A, 50W
LCD	Graphic type, 128 x 64 pixels, with back light
Operation switch, button LED	1 power switch, 1 feed button & 1 LED (3 colors: green, amber & red)
Sensors	<ul style="list-style-type: none"> • Transmissive gap sensor • Black mark reflective sensor (position adjustable) • Head open sensor
Real time clock	Standard
Internal fonts	<ul style="list-style-type: none"> • 8 alpha-numeric bitmap fonts • Monotype Image® true type font engine with one CG Triumvirate Bold Condensed scalable font
Bar code	<ul style="list-style-type: none"> • 1D bar code Code 39, Code 93, Code 128UCC, Code 128 subsets A, B, C, Codabar, Interleave 2 of 5, EAN-8, EAN-13, EAN-128, UPC-A, UPC-E, EAN and UPC 2 (5) digits add-on, MSI, PLESSEY, POSTNET, China POST, GS1 DataBar, Code 11 • 2D bar code PDF-417, Maxicode, DataMatrix, QR code, Aztec
Font and barcode rotation	0, 90, 180, 270 degree
Printer language	TSPL-EZ™ (Compatible to EPL, ZPL, ZPL II)
Media type	Continuous, die-cut, black mark, fan-fold, notched, wristband (outside wound)
Media width	15 ~ 52 mm (0.59" ~ 2.05")
Media thickness	0.06 ~ 0.19 mm (2.36 ~ 7.48 mil)
Media core diameter	25.4 mm (1")
Label length	10 ~ 2,286 mm (0.39" ~ 90")
Environment condition	Operation: 5 ~ 40°C, 25 ~ 85% non-condensing Storage: -40 ~ 60°C, 10 ~ 90% non-condensing
Safety regulation	FCC Class B, CE Class B, C-Tick Class B, UL, CUL, TÜV/Safety, CCC
Environmental concern	Comply with RoHS, WEEE
Accessories	<ul style="list-style-type: none"> • Windows labeling software CD disk • Quick start guide • USB cable • Power cord • External universal switching power supply
Limited warranty	<ul style="list-style-type: none"> • Printer: 2 years • Print head: 25 km (1 million inches) or 12 months which comes first • Platen: 50 km (2 million inches) or 12 months which comes first
Factory options	• USB host, for scanner or PC keyboard
Dealer options	<ul style="list-style-type: none"> • Peel-off module • Guillotine cutter (full cut and partial cut)
User options	N/A



CORPORATE HEADQUARTERS

TSC Auto ID Technology Co., Ltd.
Tel: +886 2 2218 6789
E-mail: printer_sales@tscprinters.com

LI ZE PLANT

TSC Auto ID Technology Co., Ltd.
Tel: +886 3 990 6677
E-mail: printer_sales@tscprinters.com

AMERICAS

TSC Auto ID Technology America Inc. Corporate Office
Tel: +1 909 525 9779
E-mail: sales@tscprinters.com

Orlando Office

Tel: +1 407 704 8918
E-mail: sales@tscprinters.com

CANADA

TSC Auto ID Technology America Inc.
Tel: +1 909 525 9779
E-mail: sales@tscprinters.com

MEXICO

TSC Mexico Representative Office
Tel: +52 (33) 3836 6682
E-mail: sales@idc-componentes.com

BRAZIL

TSC Brazil Representative Office
Tel: +55 (11) 9597 8098
E-mail: sales@tscprinters.com

EMEA

TSC Auto ID Technology EMEA GmbH
Tel: +49 (0) 8106 37979 00
E-mail: info@tsc.eu.com

RUSSIA

TSC Auto ID Technology EMEA GmbH
Tel: +7 915 422 8889
E-mail: info@tsc.eu.com

MIDDLE EAST

TSC Auto ID Technology ME Ltd, FZE
Tel: +971 4 2533 069
E-mail: info@tscmea.com

ASIA PACIFIC

TSC Auto ID Technology Co., Ltd.
Tel: +886 2 2218 6789
E-mail: printer_sales@tscprinters.com

CHINA

Tianjin TSC Auto ID Technology Co., Ltd.
Tel: +86 22 5981 6661
E-mail: sale@tscprinters.com.cn

TSC is a trademark of TSC Auto ID Technology Co., Ltd.
TSC Auto ID Technology Co., Ltd. is an ISO 9001/14001 registered company.
© 2013 TSC Auto ID Technology Co., Ltd.
Product models and Specifications are subject to change without notice.
Contact your TSC sales representative for specific information.



www.L-TronDirect.com

800-830-9523

info@L-Tron.com

596 Fishers Station Dr | Victor, NY | 14564 | Suite 1 A

www.L-Tron.com

Get in touch with us
on social media!

