

Bluetooth® Cordless Hand Scanner (CHS) *Series 7*



**Product
Selection
Guide**

socket®

Scanning Made Simple

The CHS Series 7 enables businesses to automate the collection of data anywhere in the field — *wirelessly!*



- ✓ Small & light
- ✓ Ergonomic
- ✓ Comfortable to hold
- ✓ Designed for mobility



Hospitality

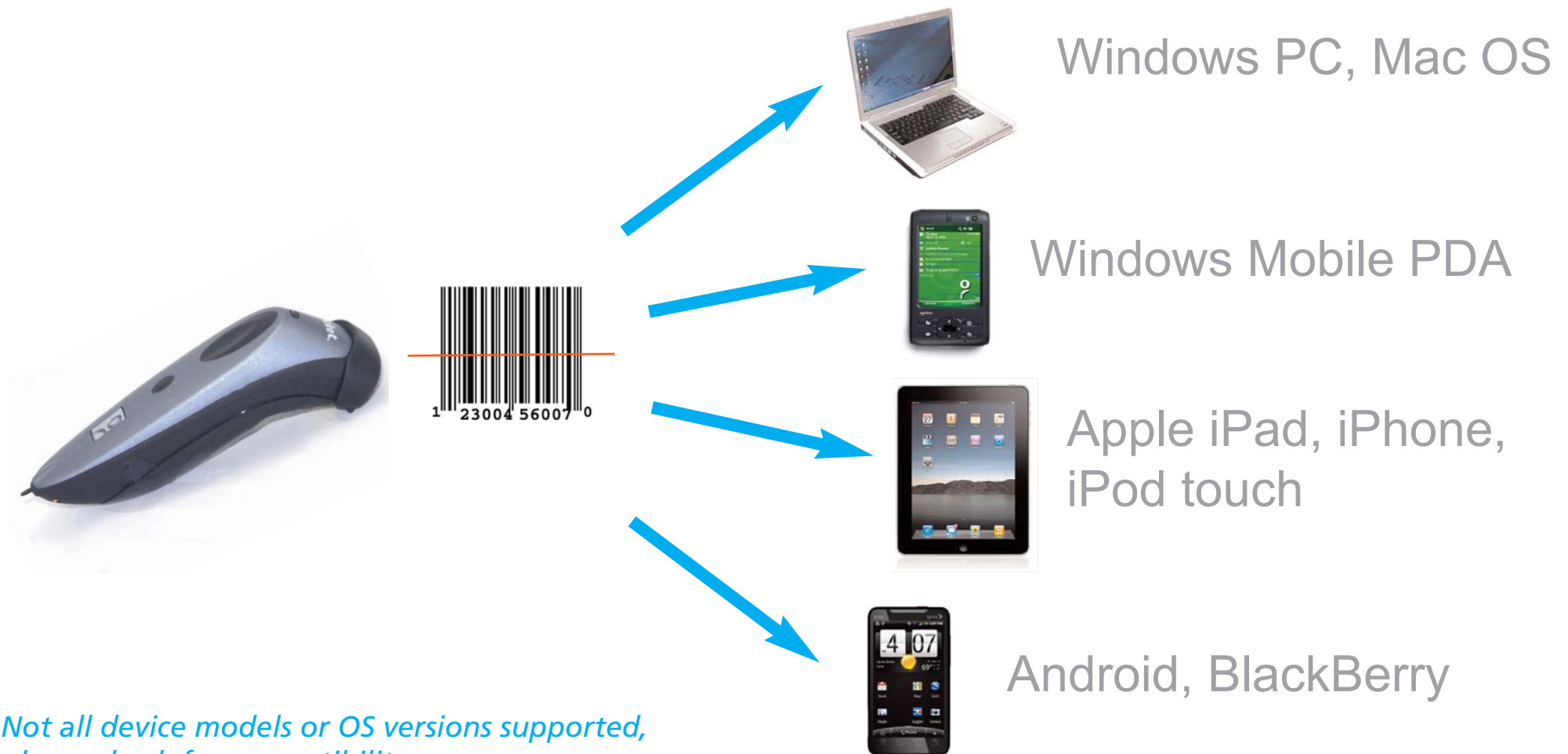


Healthcare



Automotive

The CHS Series 7 wirelessly sends scanned data to a broad range of computers, smartphones and PDAs.



*Not all device models or OS versions supported,
please check for compatibility:*

http://ww1.socketmobile.com/Libraries/Documents/CHS_Series_7_Spec_Sheet.sflb.ashx

socketmobile.com

Choose the right model for your work environment and application needs.

- 7E** Our affordable, entry-level model
- 7M** Our longer-range, high-performance model
- 7P** Our high-performance, extra durable model
- 7NRx** Our affordable, antimicrobial model
FOR HEALTHCARE



- 1D only
- 2D & 1D

-
- 7X** Our high-performance model with 2D support
 - 7XRx** Our antimicrobial, high-performance model with 2D support
FOR HEALTHCARE

Key Factors to Consider

- ✓ Type of barcode — 1D vs. 2D, symbology, size
- ✓ Scanning distance — Short-range vs. Long-range
- ✓ Type of lighting conditions (indoor vs. outdoor)
- ✓ Need for a extra durable and/or antimicrobial exterior
- ✓ Need for tactile feedback (vibrate mode) to confirm data read



1D : Parallel Lines



2D: Checkerboard / Grid

1D Barcode Scanners

7E

Our affordable, entry-level model



Class 1
Laser

Choose this model for:

- ✓ Lowest price
- ✓ Light-duty scanning (<100 scans / day)
- ✓ 1D barcodes (including ISBN for books)
- ✓ Scanning distance up to 10.5" (27 cm)
- ✓ Indoor use

SKU# CX2858-1294

socketmobile.com

Optional cradle available separately.



Our longer-range, high-performance model



Class 2
Laser

Choose this model for:

- ✓ Scanning distance up to 45" (1.1 m)
- ✓ Indoor use
- ✓ 1D barcodes (e.g., car VIN / book ISBN)
- ✓ High performance
- ✓ Barcodes on shiny surfaces, such as reflective labels or shrink wrap

SKU# CX2860-1296

socketmobile.com

Optional cradle available separately.

7P

Our high-performance, extra durable model



Class 2
Laser

Choose this model for:

- ✓ High performance
- ✓ Extra durable exterior casing
- ✓ Indoor / Outdoor use
- ✓ 1D barcodes (e.g., car VIN / book ISBN)
- ✓ Scanning distance up to 45" (1.1 m)
- ✓ Tactile feedback (vibrate mode)
- ✓ Barcodes on shiny surfaces, such as reflective labels or shrink wrap

SKU# CX2862-1298

socketmobile.com

Optional cradle available separately.



Our affordable, antimicrobial model FOR HEALTHCARE



Class 1
Laser

Choose this model for:

- ✓ Lowest price scanner for healthcare
- ✓ Antimicrobial, extra durable exterior
- ✓ Class 1 laser safe to use in patient care
- ✓ Scans 1D barcodes on medications, equipment, and patient ID bracelets
- ✓ Scanning distance up to 10.5" (27 cm)
- ✓ Tactile feedback (vibrate mode)

SKU# CX2852-1245

socketmobile.com

Optional cradle available separately.

2D Barcode Scanners

(They Support 1D Barcodes Too)

7X

Our high-performance model with 2D support



High-Density,
Omni-Directional
Imager

Choose this model for:

- ✓ 2D and 1D barcodes
- ✓ High performance
- ✓ Indoor / Outdoor use
- ✓ Tactile feedback (vibrate mode)
- ✓ Extra durable exterior casing
- ✓ Scans barcodes in any direction

SKU# CX2854-1276

socketmobile.com

Optional cradle available separately.

7XR_x

Our antimicrobial, high-performance model
with 2D support FOR HEALTHCARE



High-Density,
Omni-Directional
Imager

Choose this model for:

- ✓ 2D and 1D barcodes
- ✓ High performance
- ✓ Indoor / Outdoor use
- ✓ Tactile feedback (vibrate mode)
- ✓ Antimicrobial, extra durable exterior
- ✓ Scans barcodes in any direction

SKU# CX2856-1278

Optional cradle available separately.

socketmobile.com

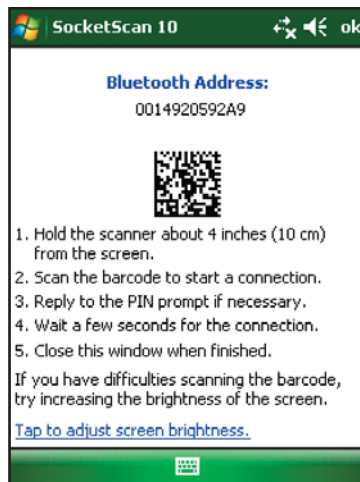
Comparison Chart - Scanner Features

Model	7E	7M	7P	7NRx	7X	7XRx
SKU	CX2858-1294	CX2860-1296	CX2862-1298	CX2852-1245	CX2854-1276	CX2856-1278
Reads 1D Barcodes	✓	✓	✓	✓	✓	✓
Reads 2D Barcodes					✓	✓
Scanner Type	Class 1 Laser	Class 2 Laser	Class 2 Laser	Class 1 Laser	HighDensity, Omni Directional CMOS imager	HighDensity, Omni Directional CMOS imager
Long-Range Scanning up to 45" (1.1m)		✓	✓			
Recommended for Outdoors			✓		✓	✓
Tactile Feedback (Vibrate)			✓	✓	✓	✓
Extra Durable Exterior Casing			✓	✓	✓	✓
Antimicrobial Exterior Casing for Healthcare				✓		✓
Battery Life Per Charge	10 h	19 h	19 h	19 h	10 h	10 h

What is SocketScan™ 10?

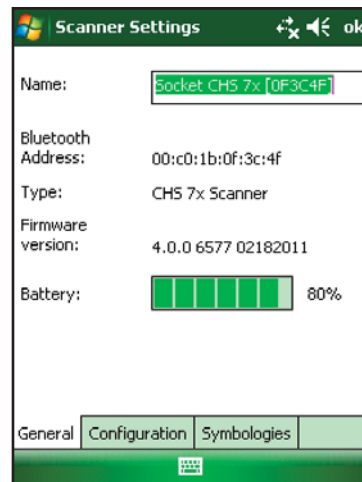
- Keyboard wedge software enters scanned data into your Android, BlackBerry or Windows application
- *Bluetooth* pairing and connection tool
- Scanner configuration utility
- SDK also available to create custom applications

Optional to install
for most platforms



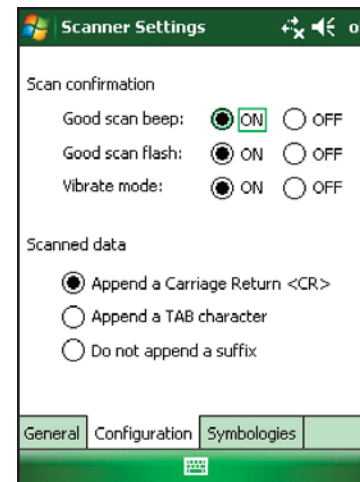
Socket EZ Pair automates *Bluetooth* pairing and connection.

For 7X and 7XRx, just scan the on-screen barcode to pair and connect.

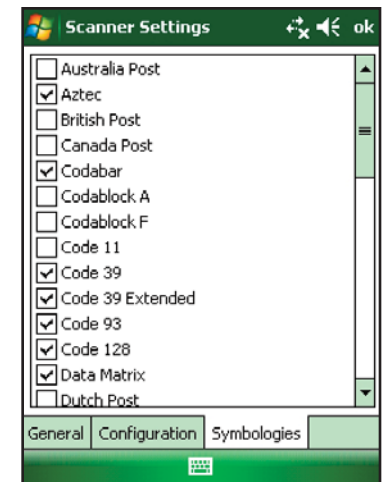


View scanner properties including battery level.

Change *Bluetooth* friendly name if desired.

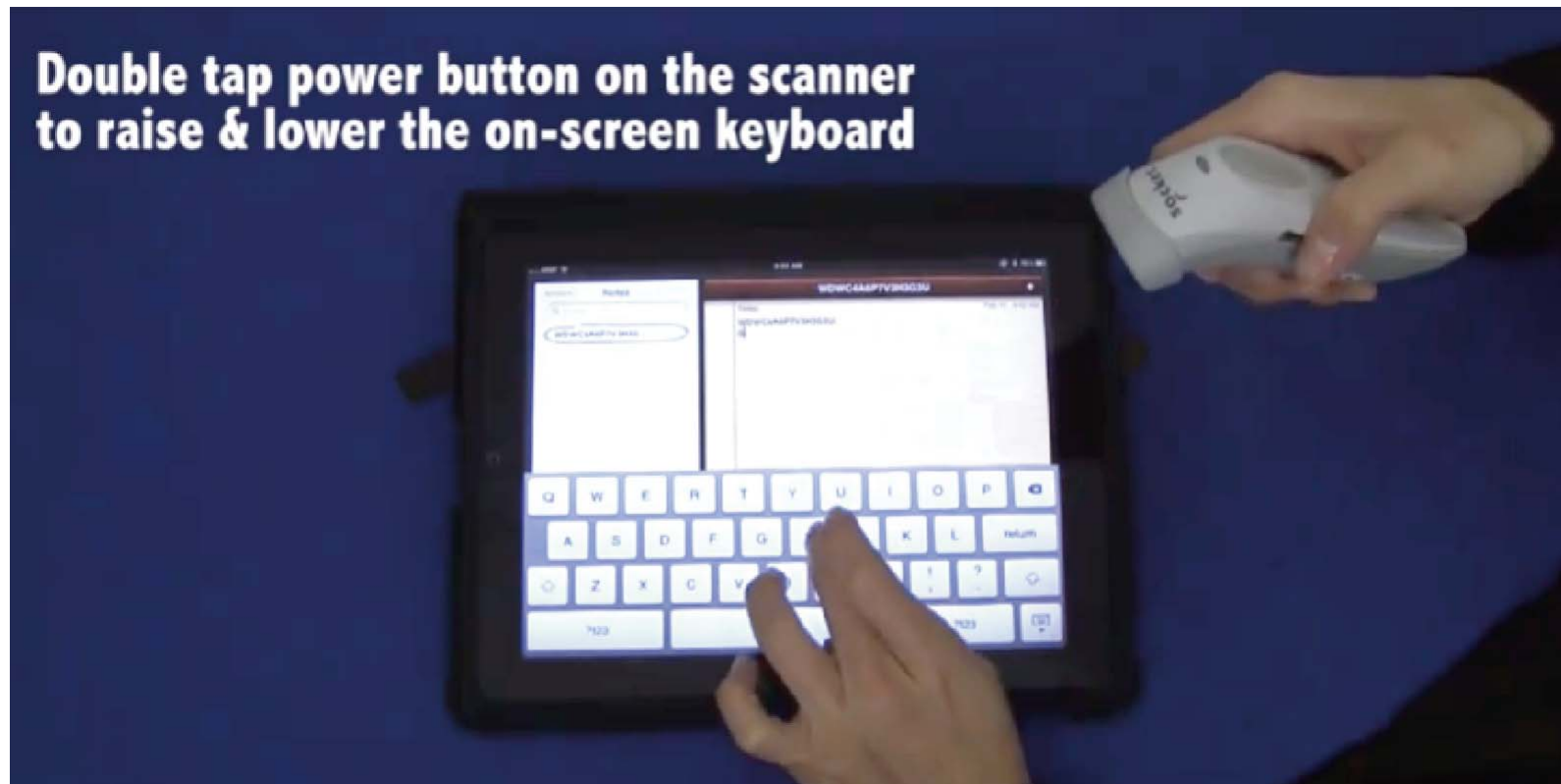


Configure beep, LED, vibrate mode or suffix.



Select symbolologies to support.

Apple iOS On-Screen Keyboard Support



Watch Video:

<http://www.youtube.com/watch?v=VhtttoC6ROs>

Compatible with CHS v3: • 7E, 7M, 7P, 7NRx: Revisions B or later • 7X, 7XRx: Revisions G or later

Need Help Choosing the Right Scanner?

Ready to Purchase?

Contact Socket Sales!



insidesales@socketmobile.com

www.socketmobile.com/contact/form/en/

USA/Canada

Toll-Free	1-800-552-3300
Eastern Region <small>(East of Mississippi R.)</small>	+1-510-933-3154
Western Region <small>(West of Mississippi R.)</small>	+1-510-933-3042

Asia Pacific	+1-510-933-3122
EMEA <small>(except UK)</small>	+33 682 719 381
UK	+44 07787 112109
Latin America	+1-510-933-3127

socket®



socketmobile.com



www.L-TronDirect.com

800-830-9523

info@L-Tron.com

596 Fishers Station Dr | Victor, NY | 14564 | Suite 1 A

www.L-Tron.com

