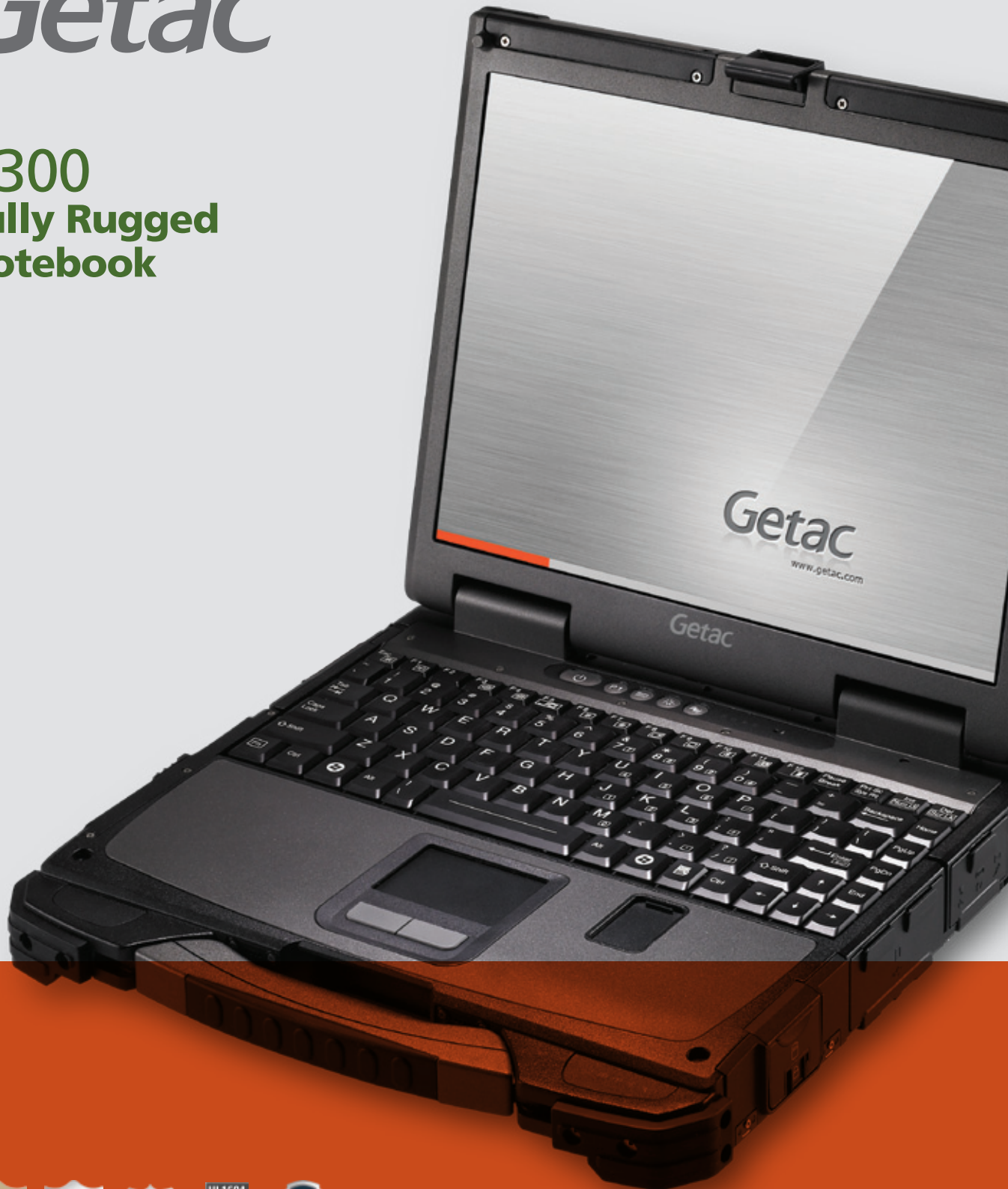


Getac recommends Windows® 7 Professional

# Getac

## B300 Fully Rugged Notebook



Business Rugged    Semi Rugged    Rugged    Fully Rugged    Ultra Rugged

Rugged Mobile Computing Solutions

# B300 Fully Rugged Notebook

Getac recommends Windows® 7 Professional



## Feature-rich rugged notebook for any demanding environment

- Cutting-edge Getac QuadraClear™ Sunlight Readable Technology: Optional 1200 Nits LCD with Touchscreen
- Up to 12 Hours of Battery Life\*\*
- Full Magnesium Alloy Case
- Shock-protected Removable HDD
- Vibration and Drop-shock Resistant
- Sealed Ports and Connectors
- MIL-STD 810G Certified and IP65 Compliance
- Optional MIL-STD 461F Certified
- Optional Salt Fog Compliance
- Optional Night Vision
- Optional UL1604 Class 1, Division 2 Group A, B, C, D

The B300 is a hard-as-nails road warrior designed to be productive and worry-free mobile computing, and it is fully customizable. It is MIL-STD 810G certified and IP65 compliant, boasting: a magnesium alloy case, shock-protected HDD, vibration and shock resistance, and sealed I/O caps and doors to prevent damage from solid particles and moisture. The B300 embraces several advanced security features to safeguard important data, including a fingerprint scanner, TPM V1.2, and an optional smart card reader. It also includes comprehensive connectivity options of Bluetooth, WLAN, GPS and 3G.

Besides an extensive list of connectivity, security options and up to 12 hours of battery life\*\*, the B300 features an ultra-bright 13.3" QuadraClear™ sunlight readable display. The elective 1200 nits display solution leads the industry with an unmatched effective contrast ratio that makes the B300 the ideal choice for daylight viewing; all of the 1200 nits displays have adopted mercury-free LED lamps. A touchscreen is an option available to both standard and 1200 nits displays.

## SPECIFICATIONS

<b>Operating System</b>	Genuine Windows® XP Professional Genuine Windows Vista® Business Windows® 7 Professional	<b>Communication Interface</b>	10/100/1000 base-T Ethernet 56K ITU V.92 modem Intel® Wireless WiFi Link 4965AGN; 802.11 a/b/g/Draft N Bluetooth (v2.1+EDR class 2) Optional GPS (with internal antenna and external MMCX connector) Optional EV-DO / GSM / GPRS / EDGE / UMTS / HSDPA
<b>Mobile Computing Platform</b>	Intel® Centrino® Technology - Intel® Core™2 Duo Processor L7500 1.6GHz - 800 MHz FSB - 4MB L2 cache - Mobile Intel® GM965 chipset	<b>Software</b>	Getac Utility Adobe® Reader® Computrace® Compatible BIOS
<b>VGA Controller</b>	Intel® Graphics Media Accelerator X3100 Max. 384MB shared memory	<b>Security Feature</b>	TPM 1.2 Fingerprint scanner Optional smart card reader (occupies one PCMCIA type II slot) Kensington lock
<b>Display</b>	13.3" TFT LCD XGA (1024 x 768) 500 nits display with optional touchscreen Optional 1200 nits QuadraClear™ sunlight readable display with touchscreen	<b>Power</b>	AC adapter (50W, 100-240V, 50/60Hz) Li-Ion smart battery (7650mAh) (up to 12 hours of battery life)** Optional Media Bay 2nd Li-Ion smart battery (7650mAh)
<b>Storage &amp; Memory</b>	1GB DDR2 expandable to 4GB SATA HDD 160GB / 250GB Optional SATA SSD 80GB	<b>Dimensions &amp; Weight (W x H x D)</b>	303.5 x 263 x 60mm (11.9" x 10.35" x 2.36") 3.5 kg (7.7 lbs)
<b>Keyboard</b>	Membrane keyboard Optional LED backlit membrane keyboard Optional LED backlit rubber keyboard	<b>Rugged Features</b>	Fully rugged MIL-STD 810G certified and IP65 compliance Optional MIL-STD 461F certified Optional UL1604 Class 1, Division 2, Group A, B, C, D Full magnesium alloy case Shock-protected removable HDD Vibration & drop resistant Optional salt fog compliance Optional night vision
<b>Pointing Device</b>	Touchscreen - Optional pressure sensitive touchscreen Touchpad - Glide touchpad with scroll bar	<b>Environmental Specification</b>	Temperature: - Operating: 0°C (32°F) to 55°C (131°F) - Optional low temperature: -20°C (-4°F) - Storage: -40°C (-40°F) to 70°C (158°F) Humidity: - 5% to 95% RH, non-condensing
<b>Expansion Slots</b>	PCMCIA Type II x 2 or Type III x 1 Optional ExpressCard 34/54mm (occupies one PCMCIA type II slot) Multi memory card reader x 1		
<b>Multimedia Bay</b>	DVD super multi drive Optional 2nd battery Optional 2nd HDD 160 / 250 GB		
<b>IO Interface</b>	Serial port (9-pin; D-sub) x 2 External VGA (15-pin; D-sub) x 1 Audio output (Mini-jack) x 1 Microphone (Mini-jack) x 1 DC in Jack x 1 USB 2.0 (4-pin) x 3 Modem (RJ11) x 1 LAN (RJ45) x 1 IEEE 1394a x 1 External GPS antenna port (only with optional GPS) x 1 Docking connector x 1 Optional RF antenna pass-through for WLAN and WWAN		

\*\* Battery life testing conducted under BatteryMark 4.0.1. Battery performance will vary upon software applications, wireless settings, power management settings, LCD brightness, customized modules and environmental conditions. The battery has a limited number of charge cycles and may eventually need to be replaced by a Getac service provider. Battery life and charge cycles vary by use and settings.

### Back Side

DC in Jack x 1  
USB 2.0 x 1  
Docking connector x 1  
External VGA x 1  
Serial port x 2



### Left Side

Battery pack x 1  
Media bay x 1



### Right Side

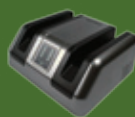
HDD drive x 1  
Expansion card slot x 2  
USB 2.0 x 2  
IEEE 1394a x 1  
Multi-card reader x 1  
Modem (RJ11) x 1  
LAN (RJ45) x 1  
Audio output x 1  
Microphone x 1  
External GPS antenna port  
(only with optional GPS) x 1



### OPTIONAL ACCESSORIES



Vehicle dock



Battery charger



Carrying bag



2nd battery



2nd HDD



Vehicle adapter  
(90Watts,  
12-32VDC input)



MIL-STD 461F  
certified  
AC adapter



## About Getac

Getac was founded in 1989 by MiTAC Technology Corporation and GE Aerospace as a joint venture, and has been a pioneer and leading innovator for the rugged mobile computing solutions ever since. Getac provides premier fully rugged notebooks, tablet PCs and handhelds for military, law enforcement, public safety, utilities, telecommunication, manufacturing, field service and mobile workforce industries. Every Getac computer is originated from the most stringent design and manufacturing processes, to ensure the best product performance. The distinguished product quality and comprehensive services are geared for ultimate customer satisfaction. For more information, please visit the Getac global website at [www.getac.com](http://www.getac.com)

## About Our Products

Getac offers a complete line of rugged notebooks, tablet PCs and handheld mobile computers for tasks performed in demanding weather conditions and extreme working environments. All of the Getac products are built with superior technologies and specifications that are aimed to meet and exceed virtually every industry's requirements of durability and in-the-field high performance.

## Why Rugged?

Getac's rugged mobile computing solutions have embraced the most rigid rugged standards to survive the most challenging environments without attrition in performance. They are pertinent for professionals who require dependable computing systems to fully function with exposure to dirt, dust, humidity, motion, vibration, change of temperature or any other harsh factor that would easily paralyze or damage commercial-grade devices.

### Getac EUROPE

Germany  
TEL: +49 8928 890 488

Getac (UK) Ltd.  
Nedge Hill  
Telford TF3 3AH, UK  
TEL: +44 1952 207 231

### Getac NORTH AMERICA

Getac Inc.  
20762 Linear Lane,  
Lake Forest, CA 92630, USA  
TEL: +1 949 699 2888  
Toll Free: +1 866 GO GETAC  
(1 866 464 3822)

### Getac TAIWAN

Getac Technology Corporation  
5F, Building A, No. 209,  
Sec. 1, Nangang Rd.,  
Nangang Dist., Taipei City  
11568, Taiwan, R.O.C.  
TEL: +886 2 2785 7888

### SALES CONTACT

North America  
Ruggedsales@getac.com

South America  
SouthAmericasales@getac.com

EMEA  
EMEAsales@getac.com

Asia Pacific  
APACsales@getac.com

### MARKETING CONTACT

Global  
Globalmarketing@getac.com

North America  
NorthAmericaMarketing@getac.com

South America  
SouthAmericaMarketing@getac.com

EMEA  
EMEMarketing@getac.com

Asia Pacific  
APACmarketing@getac.com

### SERVICE CONTACT

America Service Center  
Support@getac.com  
TEL: +1 866 EZ GETAC  
(1 866 394 3822)

Europe Service Center  
UKsupport\_getac@getac.com  
TEL: +44 1952 207238

Asia Pacific Service Center  
APACsupport\_getac@getac.com  
TEL: +86 512 57367777 ext.5740



[www.L-TronDirect.com](http://www.L-TronDirect.com)

800-830-9523

[info@L-Tron.com](mailto:info@L-Tron.com)

596 Fishers Station Dr | Victor, NY | 14564 | Suite 1 A

[www.L-Tron.com](http://www.L-Tron.com)

