
DOT MATRIX PRINTER RANGE

KEEPING BUSINESS ON THE MOVE

EPSON[®]
EXCEED YOUR VISION

EPSON DOT MATRIX RANGE



EPSON WORLD LEADERS
IMPACT DOT MATRIX PRINTER
SINCE 1996

Source: Interconnection Consulting, 2010

Epson is the world's largest manufacturer of dot matrix printers with a product range that offers the ultimate in high speed, low cost, reliable and durable printing across all stationery types. Ideal for back office, high volume data processing, and multi-part stationery – for which there is simply no alternative – no other technology offers such broad capability from a single machine.

Offering a wider choice than any other manufacturer – and spanning every duty cycle, from light to heavy duty – the Epson dot matrix range enables you to strike exactly the right balance between capability, performance and cost.



NEW

EPSON PLQ-22CS/22CSM

- Passbook printer with duplex scanner, MSR/MICR head and USB hub
- High reliability at Mean Time Between Failure (MTBF) of 10,000 power on hours (POH)
- High ribbon yield of 10 million characters

EPSON 9-PIN DOT MATRIX PRINTERS

Featuring durable, heavy and medium duty printers for continuous data processing and high speed back office tasks. Competitively priced – the Epson 9-pin dot matrix range offers exceptional value.

Combining high precision alignment and sophisticated paper handling enables this comprehensive range of narrow and wide carriage printers to tackle the widest range of high speed printing tasks with supreme accuracy, ideal for commercial, industrial and logistic applications – including data processing, invoicing, stock requisitions, cheque runs, label printing etc.

EPSON 24-PIN DOT MATRIX PRINTERS

Offering all the features available across the Epson 9-pin range, but with the addition of scalable fonts and letter quality, for superior print quality, Epson 24-pin printers are ideal for front desk applications in the retail and service industries, and for tasks such as invoice and order printing.

The range is further enhanced with flat-bed printers that enable 24-pin printing to be achieved on thicker materials and a wide variety of non-standard stationery such as receipts and label printing.

	Printer Model	Duty	Point of sale	Instore	Accounting	Listing	Passbook	
9-Pin	Epson LX-300+II	Light	●●●			●		
	Epson LX-1170II	Medium	●●	●●		●		
	Epson FX-890	High	●	●●●	●●●	●●		
	Epson FX-2190	High		●●●	●●●	●●		
	Epson DFX-9000	Heavy		●●●	●●●	●●●		
24-Pin	Epson LQ-50	Light	●●●	●●●	●	●		
	Epson LQ-300+II	Light	●●●					
	Epson LQ-590	Medium	●●	●●●	●●●	●●		
	Epson LQ-630	Light	●●	●				
	Epson LQ-680/680Pro	Medium	●●	●●●				
	Epson LQ-690	Medium	●●	●●●				
	Epson LQ-2090	Medium		●●●	●●●	●●		
	Epson LQ-2190	High		●●●	●●●	●●●		
	Epson DLQ-3500	Heavy		●●●	●●	●●●		
	Epson PLQ-20/20M	Medium	●	●			●●●	
	Epson PLQ-22CS	Medium	●	●			●●●	
	Epson PLQ-22CSM	Medium	●	●			●●●	
	Key			● Low	●● Medium	●●● High		

THE DOT MATRIX PRINTER ADVANTAGES

- Low TCO per print-outs (as low as 20 euro cents/ 100 pages)
- Multi-part capability (up to 1 original + 9 copies)
- Long lasting print-outs (up to 100 years)
- Can work under harsh environments (Hot, cold, dry, humid or dusty environments)
- Low maintenance
- Handles continuous paper (Good for transaction continuity)
- Handles media of varying thickness (Paper, multipart forms, envelopes, card etc)
- Multiple paper paths (Choose paper loading paths that match your workstation environment)
- Handles cut sheets and continuous paper simultaneously

COLOUR PRINTING

Colour printing highlights important information and gives clarity to forms. Epson colour ribbons are ultra tough and produce colourful results without bleed or smudging. An easily installed colour upgrade is available for selected printers.

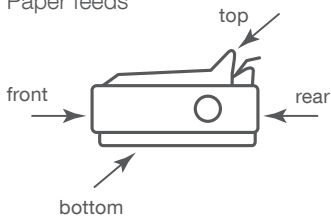
COMPATIBILITY – ESC/P2

ESC/P (Epson Standard Code for Printers) is the defacto standard dot matrix printer control language, worldwide. Adopted in the vast majority of popular software packages, ESC/P enables you to plug straight in – and print. The versatility and quality of Epson impact printing is further extended by ESC/P2 which enables Epson 24-pin printers to achieve scalable fonts and high resolution graphics.

Fully compatible with existing software, ESC/P2 is designed for use with non Windows® operating systems, enabling you to achieve font manipulation without the need for costly on-board processors. If you are working within the Windows® environment you will be able to achieve your printer's maximum speed by using printer resident fonts.

speed is more important than print quality – 9 pin

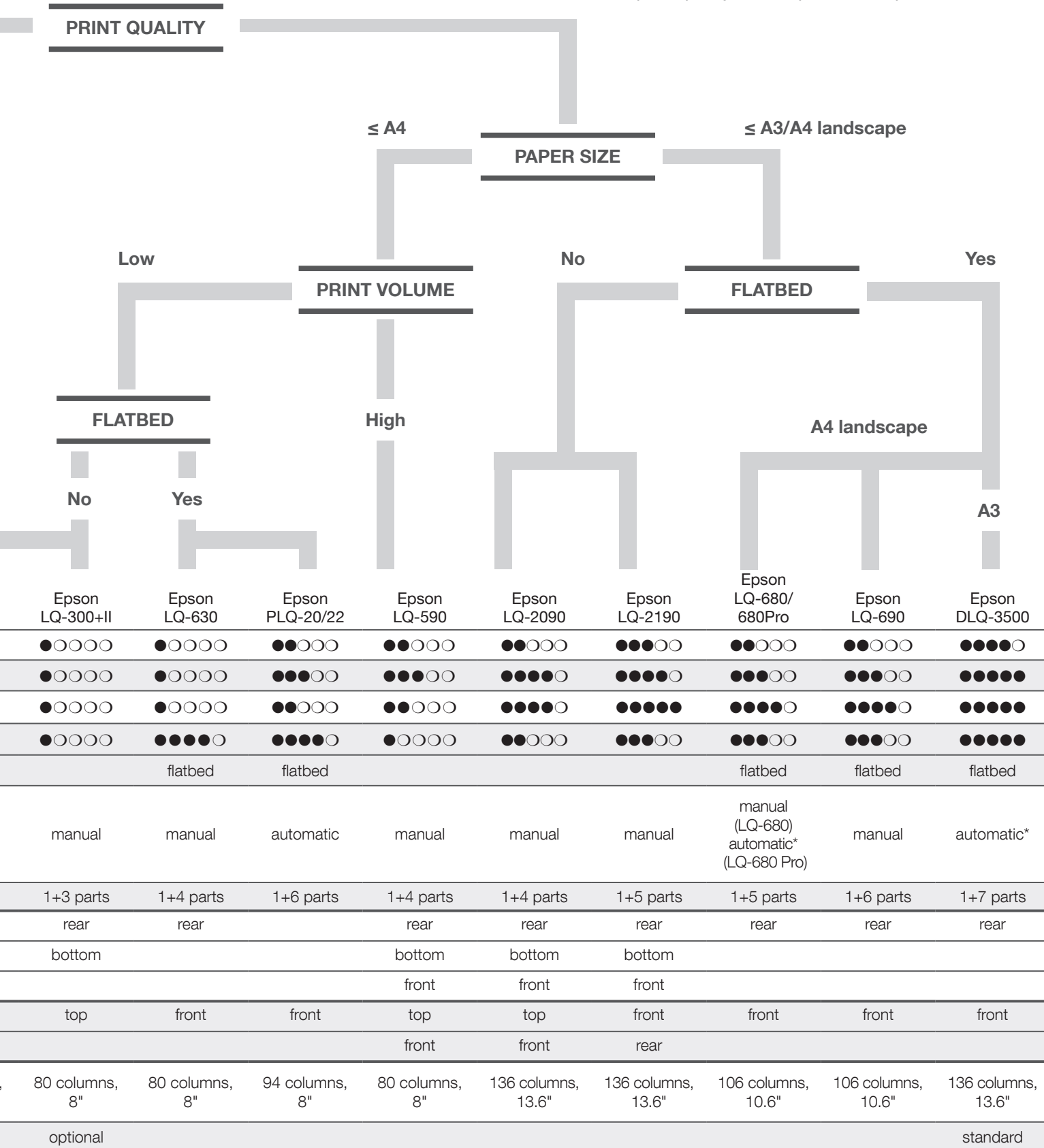
	≤ A4		≤ A3/A4 landscape			
	PRINT VOLUME		PRINT VOLUME			
	Low	High	Low	High		
	Epson LX-300+II	Epson FX-890	Epson LX-1170II	Epson FX-2190	Epson DFX-9000	Epson LQ-50
Speed	●○○○○	●●●●○	●○○○○	●●●●○	●●●●●	●○○○○
Print volumes / durability	●○○○○	●●●●○	●○○○○	●●●●○	●●●●●	●○○○○
Footprint	●○○○○	●●○○○	●●○○○	●●●●○	●●●●●	●○○○○
Quieter printing	●○○○○	●●●○○	●○○○○	●●●○○	●●●●○	●○○○○
Flatbed printer						
Platen gap adjustment	manual	manual	manual	manual	automatic*	manual
Multi copy capability	1+4 parts	1+5 parts	1+4 parts	1+5 parts	1+9 parts	1+2 parts
Paper feeds	Continuous	rear	rear	rear	rear	rear
	Cut sheet	bottom	bottom	bottom	bottom (front)	
Print width	80 columns, 8"	80 columns, 8"	136 columns, 13.6"	136 columns, 13.6"	136 columns, 13.6"	50 columns, 5"
	Colour printing	optional				



●○○○○ = low ●●●●○ = high

*DFX-9000, LQ-680Pro, PLQ-22 and DLQ-3500 have automatic platen gap adjustment to ensure optimum settings when changing between different media types with the minimum of user intervention. Automatic platen gap adjustment also allows printing on forms with varying thickness, such as multipart courier forms that also include a label.

24 pin – print quality is as important as speed



Epson LX-300+II



Because of its compact dimensions, the Epson LX-300+II is not only the ideal 9-pin printer for front and back office applications where space is limited, it's also a low cost solution for measurement and control systems. With auto switching USB, serial and parallel interfaces, the LX-300+II provides flexible standalone connectivity.

9-PIN DOT MATRIX PRINTER

Key features

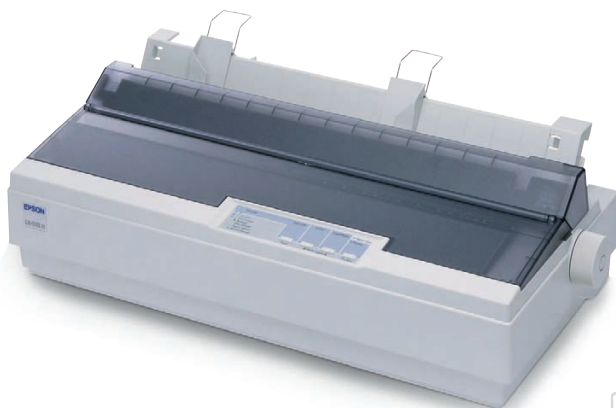
- Compact 9-pin narrow carriage printer
- Up to 337 characters per second (12/cpi)
- Copy capability of 1 original + 4 copies
- Versatile top, bottom and rear paper paths
- 8 built-in bar code fonts
- USB, parallel and serial interfaces

Options

- 50 sheet cut sheet feeder
- Roll paper holder
- Colour upgrade kit
- Push/pull tractor unit

For options and consumables see page 18–19.

Epson LX-1170II



The Epson LX-1170II is the ideal 9-pin printer for light workloads. The copy capability of one original plus four copies makes it suitable for a variety of environments including data reporting (e.g. telephone statistics and call logs, helpdesk and computer system reporting), listings, shipping documents and measurement and control systems.

9-PIN DOT MATRIX PRINTER

Key features

- Wide carriage 9-pin printer
- Up to 337 characters per second (12 cpi)
- Copy capability of 1 original + 4 copies
- Versatile top, bottom and rear paper paths
- 8 built-in bar code fonts
- USB, parallel and serial interfaces

Options

- 50 sheet cut sheet feeder
- Roll paper holder
- Push/pull tractor unit

For options and consumables see page 18–19.

	Standard	Optional
Continuous	▲	▲
Cut sheet	▲	▲

Epson FX-890



This narrow carriage printer combines high speed with the highest reliability. A mean volume between failure of 52 million lines makes it ideal for medium and large print volumes. Paper can be fed from front, top, rear or bottom and an optional additional push/pull tractor can store a second continuous form – perfect for warehouses, wholesalers, freight forwarders and finance departments.

9-PIN DOT MATRIX PRINTER

Key features

- One of the fastest printers in its class up to 680 cps (12cpi)
- Copy capability of 1 original + 5 copies
- Extremely robust printer with an MTBF of 20,000 POH
- Reliable print head life of 400 mill. characters
- Long lasting ribbon of 7.5 mill. characters
- Versatile front, top, bottom and rear paper paths
- USB and parallel interfaces

Options

- 150 or 50 sheet cut sheet feeders
- Front sheet guide
- Front paper guide
- Additional push/pull tractor unit
- Roll paper holder
- Wired network interfaces, serial interface

For options and consumables see page 18–19.

Epson FX-2190/2190N



This wide carriage printer combines high speed printing with outstanding reliability. A mean volume between failure of 52 million lines makes this printer suitable for medium and large print volumes. The paper can be fed from the front, top, rear or bottom and an optional additional push/pull tractor unit can store a second continuous form, which is ideal for commercial and industrial environments. Also available as network version FX-2190N.

9-PIN DOT MATRIX PRINTER

Key features

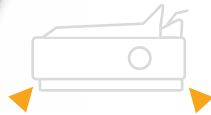
- One of the fastest printers in its class up to 680cps (12cpi)
- Copy capability of 1 original + 5 copies
- Extremely robust printer with an MTBF of 20,000 POH
- Reliable print head life of 400 mill. characters
- Long lasting ribbon of 12 mill. characters
- Versatile front, top, bottom and rear paper paths
- USB and parallel interfaces

Options

- 150 sheet cut sheet feeder
- 50 sheet cut sheet feeder
- Front sheet guide
- Front paper guide
- Additional push/pull tractor unit
- Roll paper holder
- Wired network interfaces, serial interface

For options and consumables see page 18–19.

Epson DFX-9000/9000N



The Epson DFX-9000 is a high print volume printer providing an unprecedented level of speed and reliability for the most demanding business. Its advanced paper handling accommodates a variety of paper types while the standard front and rear push tractors can be switched easily between different types of continuous paper. An optional perforation cutter provides paper finishing capabilities. Also available as network version DFX-9000N.

9-PIN DOT MATRIX PRINTER

Key features

- Extremely fast and reliable 4 x 9 pin wide carriage printer
- Extremely robust printer with an MTBF of 20,000 POH
- Fast speed up to 1,550 cps
- Copy capability of 1 original + 9 copies
- Automatic platen gap adjustment
- USB, parallel and serial interfaces

Options

- Pull tractor unit
- Perforation cutter
- Wired network interfaces
- Printer cabinet (Order code 7102677)

For options and consumables see page 18–19.

Epson LQ-50



The Epson LQ-50 fits almost anywhere thanks to its small dimensions, which measure just 275 x 240 x 153mm. A 24-pin, 50-column dot matrix, the printer takes 6-inch paper, and is ideal for locations where space is at a premium such as delivery vans and small shop counters. It's even suitable for dusty or dirty environments when used with the optional protective roll paper cover.

24-PIN DOT MATRIX PRINTER

Key features

- Ultra-compact measuring 275 x 240 x 153mm
- 24-pin, 50-column printer
- Copy capability of 1 original + 2 copies
- MTBF of around 10,000 POH
- USB and Parallel interfaces as standard
- 3 Million characters ribbon yield
- Energy star certified
- Print speed of up to 360cps

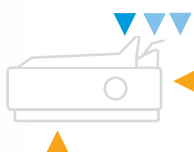
Options

- Roll paper holder

For options and consumables see page 18–19.

	Standard	Optional
Continuous	▲	▲
Cut sheet	▲	▲

Epson LQ-300+II



The compact Epson LQ-300+II is the ideal printer for front and back office applications where space may be limited as well as for measurement and control systems. The copy capability of one original plus three copies makes the 24-pin printer suitable for POS applications where reliable light duty printing is required.

24-PIN DOT MATRIX PRINTER

Key features

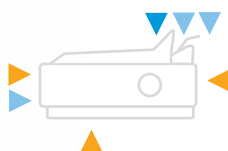
- Compact 24-pin narrow carriage printer
- Up to 300 characters per second (10cpi)
- Copy capability of 1 original + 3 copies
- Versatile top, bottom and rear paper paths
- 8 built-in bar code fonts
- USB, parallel and serial interfaces

Options

- 50 sheet cut sheet feeder
- Roll paper holder
- Colour upgrade kit
- Additional push/pull tractor unit

For options and consumables see page 18–19.

Epson LQ-590



With a mean volume between failure of 40 million lines and a high print speed of 529 cps this extremely robust printer is ideal for medium and large print volumes. Flexible paper management allows insertion from the front, top, rear, and bottom, while a front sheet guide enables front feeding of even small paper types. Typical applications are labels, barcodes and point of sale invoice printing.

24-PIN DOT MATRIX PRINTER

Key features

- Very high print speed of up to 529cps (12cpi)
- Copy capability of 1 original + 4 copies
- Extremely robust printer with an MTBF of 20,000 POH
- Reliable print head life of 400 mill. strokes/wire
- Long lasting ribbon of 5 mill. characters
- Versatile front, top, bottom and rear paper paths
- Sound reduction down to 49 dB(A) in low-noise mode

Options

- 150 sheet cut sheet feeder
- 50 sheet cut sheet feeder
- Front paper guide
- Additional push/pull tractor unit
- Roll paper holder
- Wired network interfaces, serial interface

For options and consumables see page 18–19.

Epson LQ-630



With a small footprint (39cm x 31cm) footprint, a column width of 80 characters, and print speed of up to 360cps, this printer is ideal for environments with restricted space such as retail stores, doctors surgeries, ticket offices and industrial, trade and service companies.

24-PIN DOT MATRIX PRINTER

Key features

- Compact and robust design
- Copy capability of 1 original + 4 copies
- Print at up to 360cps (12cpi)
- Also prints on small cut sheet paper (9cm x 7cm)
- Flatbed technology for ergonomic front paper feed
- USB and parallel interfaces

For options and consumables see page 18–19.

Epson LQ-680Pro



These highly durable printers have a straight, flat paper path for ultra reliable flatbed printing. The Epson LQ-680Pro also includes automatic paper thickness adjustment for optimised print quality and optimised paper feeding – ideal for frequent changing between different paper types. It handles paper with varying thickness (e.g. overlapping forms and labels), and has simple push button paper source selection (e.g. between cut sheet and continuous paper).

24-PIN DOT MATRIX PRINTER

Key features

- Reliable and durable 24-pin flat bed printer
- 106 columns printing width
- Copy capability of 1 original + 5 copies
- Prints up to 413 characters per second (10cpi)
- Parallel interface
- Automatic paper thickness adjustment
- Push button paper source selection

Options

- 150 sheet cut sheet feeder
- 50 sheet cut sheet feeder¹
- Roll paper holder
- Wired network and serial interfaces

¹) 150 sheet cut sheet feeder must be fitted first

For options and consumables see page 18–19.

	Standard	Optional
Continuous	▲	▲
Cut sheet	▲	▲

Epson LQ-690



The Epson LQ-690 offers the best in dot matrix performance where it matters most: speed, reliability, ribbon yield and ease of use. The LQ-690 is also versatile, handling cut sheets, continuous paper, labels, envelopes and cards. The new innovative Print Speed Enhancer feature allows fast printing of bit image data from Windows®.

24-PIN DOT MATRIX PRINTER

Key features

- 24 pin, 106 column, medium duty flatbed printer
- Prints up to 529cps (12cpi)
- Print Speed Enhancer: Fast printing of bit image data from Windows®
- Highly reliable with an MTBF of 20,000 POH
- High 10 million character ribbon yield
- High memory buffer of 128KB
- Copy capability of 1 original + 6 copies
- USB and parallel interfaces

Options

- Roll paper holder

For options and consumables see page 18–19.

Epson LQ-2090



An extremely robust printer with a mean volume between failure of 40 million lines. Its high print speed of 529cps makes it an ideal solution for medium and large print volumes. The Epson LQ-2090 impresses with flexible paper management which allows paper insertion from the front, top, rear, and bottom. A front paper guide makes it easy to insert even small sheets from the front.

24-PIN DOT MATRIX PRINTER

Key features

- Very high print speed of up to 529cps (12cpi)
- Copy capability of 1 original + 4 copies
- Extremely robust printer with a MTBF of 20,000 POH
- Reliable print head life of 400 mill. strokes/wire
- Long lasting ribbon of 8 mill. characters
- Versatile front, top, bottom and rear paper paths
- Sound reduction down to 50 dB(A) in low-noise mode

Options

- 150 sheet cut sheet feeder
- 50 sheet cut sheet feeder
- Front sheet guide
- Additional push/pull tractor unit
- Roll paper holder
- Wired network interfaces, serial interface

For options and consumables see page 18–19.

Epson LQ-2190/2190N



The Epson LQ-2190 is a 24-pin wide-format printer and like its predecessor – the LQ-2180 – it is a fast, flexible, cost-effective and highly reliable printing solution which combines large print volumes with high letter quality – ideal for applications such as invoices, delivery notes, inventory listings or even labels. Also available as network version LQ-2190N.

24-PIN DOT MATRIX PRINTER

Key features

- Robust and durable 24-pin wide format impact printer
- Very high print speed up to 480cps (10 cpi)
- Equipped with "Print Speed Enhancer" for even faster printing
- Highly reliable with an MTBF of 20,000 POH
- Reliable print head life of 400 million strokes/wire
- Long-lasting ribbon, approx. 15 million characters
- Copy capability of 1 original + 5 copies
- USB and parallel interfaces

Options

- Additional pull tractor unit
- Roll paper holder
- Network print server, serial interface

For options and consumables see page 18–19.

Epson DLQ-3500



This printer offers ultra reliable high speed printing. An ability to print on 8-part stationery is especially useful for multiple copy forms, while up to three media paths provide versatile paper handling – front sheet feed with auto loading, rear tractor feed with paper park, and an optional automatic cut sheet feeder. Supplied with both black and colour fabric ribbons.

24-PIN DOT MATRIX PRINTER

Key features

- Wide carriage 24-pin flat-bed printer
- Very fast print speed of up to 550cps (10cpi)
- Copy capability of 1 original + 7 copies
- Push button paper source selection
- Automatic paper thickness adjustment
- Colour printing
- USB and parallel interfaces

Options

- 250 sheet cut sheet feeder
- Automatic sheet alignment unit
- Wired network interfaces, serial interface

For options and consumables see page 18–19.

	Standard	Optional
Continuous	▲	▲
Cut sheet	▲	▲

Epson PLQ-20/PLQ-20M

Epson PLQ-20D/PLQ-20DM



The Epson PLQ-20 Series, Epson's passbook printer is ideal for all front desks applications such as banking, public administrations, and all booklet or thick media high speed good quality printing requirement. With its tiny footprint, automatic sheet alignment and print head adjustment it's the perfect solution for your flatbed printing needs.

24-PIN DOT MATRIX PRINTER

Key features

- Neat, compact and robust design
- Automatic sheet alignment and thickness adjustment
- High print speed of up to 480cps
- Quiet 24-pin document or passbook printer
- Copy capability of 1 original + 6 copies
- Flatbed technology for ergonomic front paper feed
- Olivetti PR2, Epson ESC/P2, Wincor 4915, IBM PPDS and IBM 4722 FP emulations
- Software tool for remote firmware upgrade, configuration and information retrieval
- PLQ-20: basic model
- PLQ-20M: with MSRW
- PLQ-20D: with dual serial IF
- PLQ-20DM: with dual serial IF + MSRW

Options

- Space saving kit (includes a top paper tray and a rear paper guide)

For options and consumables see page 18–19.

Epson PLQ-22/PLQ-22M

Epson PLQ-22CS/PLQ-22CSM



Enhance specialist printing in your bank, post office or government office with this all-in-one flatbed dot matrix printer with dual-side colour scanner, MICR/MSRW head and USB hub. It's a great way to bring reliability, durability and a low total cost of ownership to your official printing. PLQ-22 and PLQ-22M are versions without the built-in scanner.

24-PIN DOT MATRIX PRINTER

Key features

- Automatic Sheet alignment and thickness adjustment
- High print speed of up to 576cps
- Built in duplex, high speed colour scanner
- Copy capability of 1 original + 6 copies
- Factory optional MICR/MSRW head
- Factory optional USB hub
- 10 Million characters of ribbon yield
- MTBF of 10,000 POH

Options

- Space saving kit (Includes a top paper tray and a rear paper guide)

For options and consumables see page 18–19.

SPECIFICATIONS EPSON 24-PIN

	LQ-50	LQ-300+II	LQ-590	LQ-630	LQ-680/Pro
CARRIAGE WIDTH IN COLUMNS	50	80	80	80	106
PRINT SPEEDS	10cpi 12cpi	10cpi 12cpi	10cpi 12cpi	10cpi 12cpi	10cpi 12cpi
High speed draft	300 360	300 n/a	440 529	300 360	413 n/a
Draft	225 270	225 270	330 396	225 270	310 372
Letter quality	75 90	75 90	110 132	79 94	103 124
EMULATIONS					
Epson	ESC/P2	ESC/P2	ESC/P2	ESC/P2	ESC/P2
IBM / OLIVETTI	IBM 2390 plus	IBMX24E 2390 Plus	IBM PPDS	IBM PPDS	2390 Plus
PAPER HANDLING FEATURES					
Auto paper loading	■	■	■	■	■
Auto and manual tear off position	■	■	■	■	■
Paper parking – continuous stationery	■	■	■	■	■
Micro feed	■	■	■	■	■
Automatic platen gap adjustment					■ *7
CUT SHEET STATIONERY					
Single sheet, paper, labels or envelopes		■	■	■	■
Multi-part forms (original + copies)		1+3	□ 1+4 *4	1+4	1+5
Sheets with varying thickness					■ *7
Multipart with overlap					■ *7
Front in front out				■	■
Front in rear out					
Front in top out			■		
Top in top out		■	■		
50 sheet cut sheet feeder		□	□		□ *3
150 sheet cut sheet feeder			□		□
250 sheet cut sheet feeder					
Combined 50/150 sheet cut sheet feeders			□		□
Front paper guide			■ *5		
Front sheet guide			□ *6	■	■
Automatic sheet alignment unit					
ROLL PAPER	■	□	□		□
CONTINUOUS STATIONARY	■				
Single sheet or labels		■	■	■	■
Multi-part (original + copies)	1+2	1+3	1+4	1+4	1+5
Sheets with varying thickness					■ *7
Multipart with overlap					■ *7
Rear in front out – push feed				■	■
Rear in top out – push feed	■	■	■		
Rear in top out – pull feed		■	■		
Rear in top out – push and pull feed		□ *1	□ *1		
Front in top out – push feed			■		
Front in top out – pull feed			■		
Front in top out – push and pull feed			□ *1		
Bottom in top out – pull feed		■	■		
Two stationery types loaded at once			□ *1		
BUFFER	64KB	64KB	128KB	32KB	64KB
ACOUSTIC NOISE LEVEL	54dB(A)	49dB(A)	49dB(A)	57dB(A)	55dB(A)
COLOUR PRINTING		□			
FONTS					
Epson Draft	■	■	■	■	■
Epson Courier	■	■	■	■	■
Epson OCR-B	■	■	■	■	■
Epson Orator	■	■	■	■	■
Epson Orator-S	■	■	■	■	■
Epson Prestige	■	■	■	■	■
Epson Roman	■ S	■ S	■ S	■ S	■ S
Epson Roman T	■ S	■ S	■ S	■ S	■ S
Epson Sans Serif	■ S	■ S	■ S	■ S	■ S
Epson Sans Serif H	■ S	■ S	■ S	■ S	■ S
Epson Script	■	■	■	■	■
Epson Script C	■	■	■	■	■
BARCODE FONTS					
Code 128	■	■	■	■	■
Code 39	■	■	■	■	■
EAN-13	■	■	■	■	■
EAN-8	■	■	■	■	■
Interleave 2 of 5	■	■	■	■	■
PostNet	■	■	■	■	■
UPC-A	■	■	■	■	■
UPC-E	■	■	■	■	■
INTERFACES⁹					
USB	■	■	■	■	■
Parallel	■	■	■	■	■
Serial			□		□
Network print server			□		□
Type B space			■		■
DIMENSIONS IN MILLIMETRES					
Width	262mm	366mm	437.5mm	386mm	497mm
Depth	240mm	275mm	374.5mm	306mm	387mm
Height	153mm	159mm	171.5mm	185mm	230mm
WEIGHT	3.3kg	4.4kg	7.1kg	3.5kg	9.4kg
MTBF (POWER ON HOURS)	10,000	6,000	20,000	6,000	10,000
PRINT HEAD LIFE (MILLION STROKES PER WIRE)					
Black	200m	200m	400m	200m	400m
Colour		100m			
RIBBON LIFE (IN MILLION CHARACTERS)					
BLACK RIBBON	3m	2m	5m	2m	2m
COLOUR RIBBON					
Black		1m			
Cyan		0.7m			
Magenta		0.7m			
Yellow		0.5m			

*1) requires additional convertible tractor unit option *2) requires two additional convertible tractor unit options *3) 150 sheet cut sheet feeder must be fitted first *4) front feed only *5) can be used in conjunction with front continuous paper feeding *6) cannot be used in conjunction with front continuous paper feeding *7) LQ-680Pro only

SPECIFICATIONS EPSON 24-PIN

LQ-690	LQ-2090	LQ-2190/N	DLQ-3500	PLQ-20/M	PLQ-20D/DM	PLQ-22CS/CSM
106	136	136	136	94	94	106
10cpi 12cpi	10cpi 12cpi	10cpi 12cpi	10cpi 12cpi	10cpi 12cpi	10cpi 12cpi	10cpi 12cpi
440 529	440 529	480 576	550 n/a	480 576	480 576	440 529
330 396	330 396	360 432	495 594	360 432	360 432	330 396
110 132	110 132	120 144	165 198	120 144	120 144	110 132
ESC/P2	ESC/P2	ESC/P2	ESC/P2	ESC/P2	ESC/P2	ESC/P2
IBM PPDS	IBM PPDS	IBM PPDS	ProPrinter 2391+ ProPrinter DS	IBM PPDS/PR2	IBM PPDS/PR2 IBM4722FP / WNI4915+	IBM PPDS
■	■	■	■			
■	■	■	■			
■	■	■	■			
			■			
■	■	■	■	■	■	■
1+6	1+4	1+5	1+7	1+6	1+6	1+6
■			■			■
			■			■
			■			■
	■					
	■					
	□					
	□		□			
	□					
■	□ *5	■ *5	■			
	■ *6		■			
■	□	□	□	■	■	■
1+6	1+4	1+5	1+7	■	■	■
			■			■
■			■			■
	■					
	■					
	□ *1					
	■					
	■					
	□ *1					
	■					
	□ *1					
128KB	128KB	128KB	128KB	64KB	64KB	128KB
57dB(A)	50dB(A)	54dB(A)	59dB(A)	53dB(A)	53dB(A)	51dB(A)
■			■			
■			■			
■			■			
■			■			
■			■			
■			■			
■			■			
■			■			
■ S	■ S	■ S	■ S			
■ S	■ S	■ S	■ S			
■ S	■ S	■ S	■ S			
■ S	■ S	■ S	■ S			
■			■			
■			■			
■			■			
■			■			
■			■			
■			■			
■			■			
■			■			
■			■			
	□		□			
	□		□		■ Dual	■ Dual
	■		■			
480mm	612.5mm	639mm	660mm	384mm	384mm	480mm
370mm	374.5mm	402mm	432mm	280mm	280mm	370mm
210mm	171.5mm	256mm	276mm	203mm	203mm	210mm
6.8kg	9.5kg	13kg	18.1kg	7.7/8.7kg	7.7/8.7kg	8.2/9.2kg
20,000	20,000	20,000	10,000	10,000	10,000	20,000
400m	400m	400m	400m	400m	400m	400m
10m	8m	15m	6m or 9m	5m	5m	10m
			1.5m			
			1.1m			
			1.1m			
			0.8m			

*8) Multipart 1+6 copies when using pull feed *9) Not available in all countries. Please contact your local Epson representative.
 ■ = Standard □ = Optional S = Scalable from 2 to 32 point in 2 point steps

SPECIFICATIONS EPSON 9-PIN

	LX-300+II	LX-1170II	FX-890	FX-2190/N	DFX-9000/N
CARRIAGE WIDTH IN COLUMNS	80	136	80	136	136
PRINT SPEEDS	10cpi 12cpi	10cpi 12cpi	10cpi 12cpi	10cpi 12cpi	10cpi 12cpi
Ultra high speed draft			566 680	566 680	
High speed draft	300 337	300 337	559 627	559 627	1550 1450
Draft	225 270	225 270	419 503	419 503	1320 1320
Near letter quality	56 67	56 67	104.6 125.9	104.6 125.9	330 330
EMULATIONS					
Epson	ESC/P	ESC/P	ESC/P	ESC/P	ESC/P
IBM / OKI	2380 Plus	2381 Plus	ProPrinter DS / ML	ProPrinter DS / ML	2381 Plus / PPDS
PAPER HANDLING FEATURES					
Auto paper loading	■	■	■	■	■
Auto and manual tear off position	■	■	■	■	■
Paper parking – continuous stationery	■	■	■	■	■
Micro feed	■	■	■	■	■
Automatic platen gap adjustment					■
CUT SHEET STATIONERY					
Single sheet, paper, labels or envelopes	■	■	■	■	
Multi-part forms (original + copies)	1+4	1+4	1+5	1+5	
Front in top out			□	□	
Top in top out	■	■	■	■	
50 sheet cut sheet feeder	□	□	□	□	
150 sheet cut sheet feeder			□	□	
Combined 50/150 sheet cut sheet feeders			□	□	
Front paper guide			□ *5	□ *5	
Front sheet guide			□ *6	□ *6	
ROLL PAPER	□	□	□	□	
CONTINUOUS STATIONERY					
Single sheet or labels	■	■	■	■	■
Multi-part (original + copies)	1+4	1+4	1+5 *8	1+5 *8	1+9 front 1+6 rear
Sheets with varying thickness					■
Multipart with overlap					■
Rear in top out – push feed	■	■	■	■	■
Rear in top out – pull feed	■	■	■	■	□
Rear in top out – push and pull feed	□ *1	□ *1	□ *1	□ *1	□
Front in top out – push feed			■	■	■
Front in top out – pull feed			■	■	□
Front in top out – push and pull feed			□ *1	□ *1	□
Bottom in top out – pull feed	■	■	■	■	
Two stationery types loaded at once			□ *1	□ *1	■
Buffer	64KB	64KB	128KB	128KB	128KB
ACOUSTIC NOISE LEVEL	49dB(A)	49dB(A)	55dB(A)	55dB(A)	58dB(A)
COLOUR PRINTING	□				
FONTS					
Epson Draft	■	■	■	■	■
Epson Roman	■	■	■	■	■
Epson Sans Serif	■	■	■	■	■
BARCODE FONTS					
Code 128	■	■	■	■	■
Code 39	■	■	■	■	■
EAN-13	■	■	■	■	■
EAN-8	■	■	■	■	■
Interleave 2 of 5	■	■	■	■	■
PostNet	■	■	■	■	■
UPC-A	■	■	■	■	■
UPC-E	■	■	■	■	■
INTERFACES⁹⁾					
USB	■	■	■	■	■
Parallel	■	■	■	■	■
Serial	■	■	□	□	■
Network print server			□	□	□
Type B internal interface slot			■	■	■
DIMENSIONS IN MILLIMETRES					
Width	366mm	546mm	414mm	589mm	700mm
Depth	275mm	275mm	350mm	350mm	378mm
Height	159mm	163mm	167.5mm	167.5mm	363mm
WEIGHT	4.4kg	6.3kg	7.2kg	9.4kg	34kg
MTBF (POWER ON HOURS)	6,000	6,000	20,000	20,000	20,000
PRINT HEAD LIFE (MILLION STROKES PER WIRE)					
Black	400m	400m	400m	400m	400m
Colour	100m				
RIBBON LIFE (IN MILLION CHARACTERS)					
BLACK RIBBON	3m	3m	7.5m	12m	15m
COLOUR RIBBON					
Black	1m				
Cyan	0.7m				
Magenta	0.7m				
Yellow	0.5m				

*1) requires additional convertible tractor unit option *2) requires two additional convertible tractor unit options *3) 150 sheet cut sheet feeder must be fitted first *4) front feed only *5) can be used in conjunction with front continuous paper feeding *6) cannot be used in conjunction with front continuous paper feeding *7) LQ-680Pro only *8) Multipart 1+6 copies when using pull feed *9) Not available in all countries. Please contact your local Epson representative ■ = Standard □ = Optional S = Scalable from 2 to 32 point in 2 point steps

OPTIONS, ACCESSORIES AND SUPPLIES

9-pin	OPTIONAL PAPER HANDLING	Order code	LX-300+II	LX-1170II	FX-890	FX-2190/N	DFX-9000/N
	Colour upgrade kit	C12C832082	●				
	Convertible tractor unit	C12C800202				●	
		C12C800212					●
		C12C800302	●				
		C12C800341		●			
	Pull tractor unit	C12C800382					●
	Roll paper holder	C12C811141	●	●	●	●	
	Front paper guide	C12C814022			● *2		
	Front sheet guide	C12C814032				● *2	
		C12C814001			● *3		
		C12C814011				● *3	
	50 sheet cut sheet feeder	C12C806372	●		●		
		C12C806392		●		●	
	150 sheet cut sheet feeder	C12C806382			●		
C12C806402					●		
Perforation cutter	C12C815072					●	
SUPPLIES							
Black fabric ribbon		C13S015019	C13S015020	C13S015329	C13S015327	C13S015384	
Colour fabric ribbon		C13S015073					
OPTIONAL INTERFACES^{*4}							
Serial interface (OK buffer)	C12C824432				●	●	●
Epsonnet 10/100 Base Tx Int. Printer Server 5e	C12C824352				●	●	●
WARRANTY^{*4}							
1 year replacement or repair		●	●	●	●		
1 year on-site							●
Optional extension to 3 years		ECPGRP10	ECPGRP20	ECPGRP20	ECPGRP25	ECPGRP70	

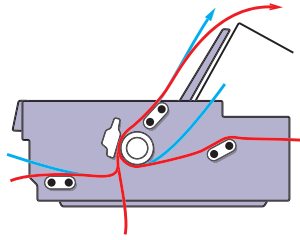
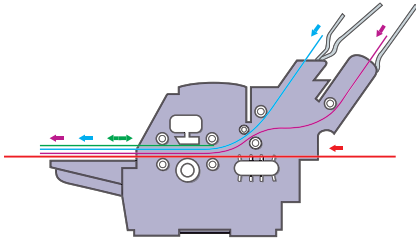
24-pin	OPTIONAL PAPER HANDLING	Order code	LQ-50	LQ-300+II	LQ-590	LQ-630	LQ-680/Pro	LQ-690	LQ-2090	LQ-2190/N	DLQ-3500	PLQ-20/M/D/DM	PLQ-22CS/C5M
	Colour upgrade kit	C12C832112		●									
	Convertible tractor unit	C12C800202			●								
		C12C800212							●				
		C12C800302			●								
		C12C800322								●			
	Roll paper holder	C12C811141		●	●		●	●	●	●	●	●	●
		C12C811262	●										
	Front sheet guide	C12C814011							●				
	Front paper guide	C12C814022			●								
	50 sheet cut sheet feeder	C12C806372		●	●								
		C12C806392							●				
		C12C806792						*1 ●					
	150 sheet cut sheet feeder	C12C806382			●								
		C12C806402							●				
C12C806872						●							
250 sheet cut sheet feeder	C12C806832									●			
Space saving kit	C12C802202										●	●	
Automatic sheet alignment unit	C12C806882									●			
SUPPLIES													
Black fabric ribbon	C13S015(+)	+624	+021	+337	+307	+262	+610	+336	+086	+066	+339	+339	
Colour fabric ribbon	C13S015(+)		+077								+067		
Black film ribbon	C13S015255		●			●							
OPTIONAL INTERFACES^{*4}													
Serial interface (OK buffer)	C12C824432			●		●		●	●	●			
EpsonNet 10/100 Base Tx int. Print Server 5e	C12C824352			●		●		●	●	●			
WARRANTY^{*4}													
1 year replacement or repair			●	●	●	●	●	●	●	●		●	●
1 year On-site										●	●		
Extension to 3 years	ECP-(+)	+GRP5	+GRP10	+GRP20	+GRP20	+GRP20	+GRP20	+GRP30	+GRP30	+GRP50	+GRP20	+GRP20	

*1) 150 sheet cut sheet feeder must be fitted first *2) can be used in conjunction with front continuous paper feeding *3) cannot be used in conjunction with front continuous paper feeding

*4) Not available in all countries. Please contact your local Epson representative.

OPTIONS AND ACCESSORIES

TYPICAL PAPER PATHS



MOTORISED SHEET FEEDERS

For high volume cut sheet printing, optional motorised cut sheet feeders are available for selected products, like the 150 sheet cut sheet feeder for the Epson LQ-2090. Equipped with productivity enhancing, independent motor drives, these feeders reduce paper handling time and ensure optimum paper throughput.

CUT SHEET FEEDERS

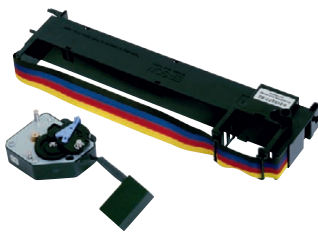
Offering 50, 150 and 250 sheet, for automatic selection of forms and plain stationery.

PAPER FEED TRACTORS

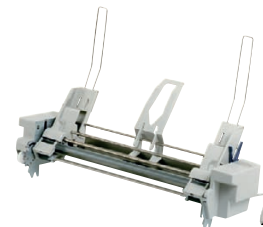
A choice of push, pull, and push/pull combined tractors not only enable more than one stationery type to be permanently loaded for delivery on demand, but handle continuous and multi-part stationery more efficiently.



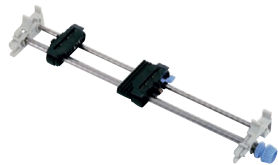
LX-300 COLOUR UPGRADE KIT
C12C832082



LQ-300 COLOUR UPGRADE KIT
C12C832112



DLQ-3000+/3500 SINGLE-BIN CSF
C12C806832



LX-300 PULL TRACTOR UNIT
C12C800302



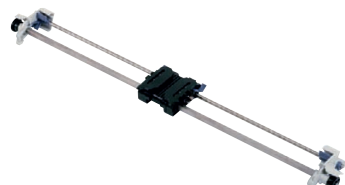
LX-1170 PULL TRACTOR UNIT
C12C800341



DFX-9000 TRACTOR UNIT
C12C800382



LQ-1170 PUSH/PULL TRACTOR UNIT
C12C800212



FX-/LQ-2170 PULL TRACTOR UNIT
C12C800322



LQ-870 PUSH/PULL TRACTOR UNIT
C12C800202



ROLL PAPER HOLDER
C12C811141



LQ-50 ROLL PAPER HOLDER
C12C811262



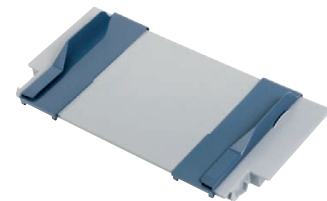
AUTOMATIC SHEET ALIGNMENT UNIT
C12C806882



FX-1180 FRONT SHEET GUIDE
C12C814032



FX-880 FRONT SHEET GUIDE
C12C814022



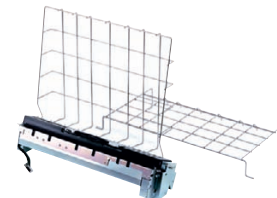
LQ-870 FRONT SHEET GUIDE
C12C814001



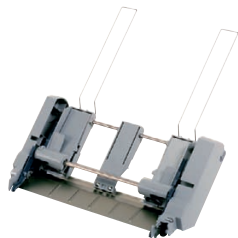
PLQ-20 SPACE SAVING KIT
C12C802202



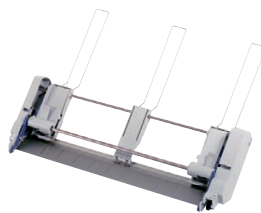
LQ-1170 FRONT SHEET GUIDE
C12C814011



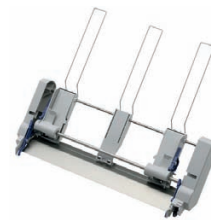
DFX-8500 PERFORATION CUTTER
C12C815072



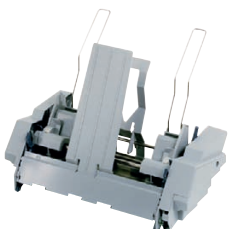
LQ-/SQ-870/LQ-570 SINGLE CSF
C12C806372



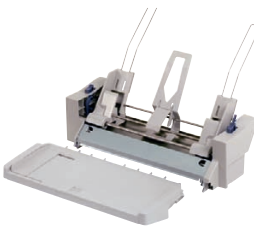
FX-1180/1170/SQ-1170/LX-1170 CSF
C12C806392



LQ-670 SECOND-BIN CSF
C12C806792



LQ-570 HIGH CAPACITY CSF
C12C806382



LQ-680/680PRO HIGH CAPACITY CSF
C12C806872



LQ-1170 HIGH CAPACITY CSF
C12C806402



SERIAL I/F BOARD NO BUFFER TYPE-B
C12C824432



EPSON NET 10/100 BASE TX. INT. PRINT
SERV. 5E
C12C824352



DFX-9000 CABINET
7102677



Better Products for a Better Future™



EPSON WORLD LEADERS
IMPACT DOT MATRIX PRINTER
SINCE 1996



SIDM-Range_Brochure_1EN-INT_08/11

*Source: Interconnection Consulting, 2010

All features and specifications described are subject to change without notice. When Epson products are used for applications requiring high reliability/safety such as transportation devices related to aviation, rail, marine, automotive etc.; disaster prevention devices; various safety device etc.; or functional/precision device etc.; you should use the products only after giving consideration to inclusion of fail-safes and redundancies into your design to maintain safety and total system reliability.

Not all products are available in all countries. Please contact your local Epson office for more detail.

For further information please contact your local Epson office or visit www.epson-europe.com

Austria 0810/20 01 13 (0,07 €/Min.) Belgium 070/350120 (0,1735 €/min.) Czech 800/142 052 Denmark 44 50 85 85 Finland 0201 552 091 France 09 74 75 04 04 (0,12€/min) Germany 01805/23 41 10 (0,14 €/Min.) Greece 210-8099499 Hungary 06800 147 83 Ireland 01 436 7742 Italy 02-660321 10 (0,12 €/min.) Luxembourg 900/43010 (0,24 €/min.) Middle East +9714 8818934 Netherlands 0900-5050808 (0,05 €/oproep + 0,15 €/min.) Norway 22 06 42 80 Poland 0-0-800 4911299 (0,16 zł/min.) Portugal 707 222 111 Russia (095) 777-03-55 Slovakia 0850 111 429 South Africa (+2711) 465-9621 Spain 93 582 15 00 Sweden 0771-400135 (Mobilsamtal – 0,99 kr/min, Lokala samtal – 0,30 kr/min, Utlandssamtal – 0,89 kr/min) Switzerland 0848 448820 (4-8 cent./min.) Turkey (0212) 3360303 United Kingdom 0871 222 6702

Trademarks and registered trademarks are the property of Seiko Epson Corporation or their respective owners. Product information is subject to change without prior notice.

EPSON®



www.L-TronDirect.com

800-830-9523

info@L-Tron.com

596 Fishers Station Dr | Victor, NY | 14564 | Suite 1 A

www.L-Tron.com

Get in touch with us
on social media!

