

# CompactFlash Scan Card 5XRx

*With Antimicrobial Protection*

## Data Collection for the Healthcare Professional



CF Scan Card 5XRx with Socket SoMo® 650Rx handheld computer (sold separately)



CF Scan Card 5XRx

Designed for healthcare professionals, the Socket CompactFlash Scan Card 5XRx incorporates antimicrobial materials that provide an extra layer of protection to the product to protect against the multiplication and spread of potentially harmful bacteria and microbes. Delivering superior barcode scanning performance in a CompactFlash (CF) form factor, the CF Scan Card 5XRx is an ideal data collection tool for the most demanding healthcare applications and environments.

### Benefits:

- The case plastics are made with an antimicrobial additive to provide an extra layer of protection against the multiplication and spread of potentially harmful bacteria and microbes
- One-handed barcode scanning with a PDA (not included) leaves the other hand free to handle medications or equipment for increased productivity
- Easy integration with applications on Windows-based PDAs or tablet/notebook/desktop computers with a CompactFlash or PC Card slot
- Dependable with low power consumption

### Key Features:

- Modular design based on the CompactFlash card form factor enables you to switch or upgrade computers and keep using the same scanner
- Support for 1D and 2D barcodes, including GS1 DataBar, Aztec, Data Matrix, etc.
- Powerful high-density imager effectively reads small barcodes on medications and asset tags
- Socket's VAR and integrator partners provide a full range of healthcare solutions

### HARDWARE FEATURES

- Antimicrobial material added to plastics
- 1D and 2D barcode scanning
- Durable card with integrated scanner plugs into CompactFlash (CF) slot with a snug, secure fit
- With CF-to-PC Card adapter, also works in a PC Card (PCMCIA) slot\*
- Compatible with computers running:
  - Windows Mobile 6 Classic/Professional
  - Windows Mobile 2003/2003SE/5.0 for Pocket PC
  - Windows Vista, XP
- One-handed operation with a handheld device improves efficiency by freeing the other hand to handle packages or equipment
- Easy to pack and easy to maintain, with no extra batteries or power adapter required
- Battery Friendly® technology reduces power consumption, maximizing the battery life of your mobile computer
- Great to combine with Socket SoMo® 650Rx handheld computer for a complete antimicrobial solution
- One year warranty
- SocketCare™ enhanced service program available separately

### SOFTWARE FEATURES

- SocketScan™ keyboard wedge software enters scanned data into any application — no custom programming needed
- Automatically add prefix and suffix functions, such as carriage return and tab, to further eliminate manual data entry
- Assign a beep tone or .WAV audio file to signify a successful scan
- Easily enable/disable barcode symbologies with SocketScan Symbology Selector utility
- View the properties of any barcode, including symbology, length, and decoded data, for any of the supported symbologies
- Compatible with Windows-based development tools for custom applications
- SDK available to application developers
- Floating Trigger for Windows Mobile puts an icon on your screen that you can tap to trigger the scanner
- No license fee for standard software
- Standard Microsoft Windows installation with standard UI provides ease of use

\*PC Card adapter sold separately

# CompactFlash Scan Card 5XRx

With Antimicrobial Protection

### In the Box:

- CompactFlash Scan Card 5XRx
- Installation CD with software and user documentation



### SoMo 650Rx

Windows Mobile based handheld computer made with antimicrobial materials.



SKU# (single unit)  
N. America HC1427-1224  
EMEA HC1428-1225

### Type II PC Card Adapter

Enables usage in a Type II PC Card slot of a tablet/ notebook/ desktop PC



SKU#  
Single unit AC4001-515  
20 pack AC4004-253



Sales Offices  
Corporate Headquarters:  
39700 Eureka Drive  
Newark, CA 94560 USA

Web: [socketmobile.com](http://socketmobile.com)

Phone: +1-510-933-3000

USA & Canada Toll Free: 800-552-3300

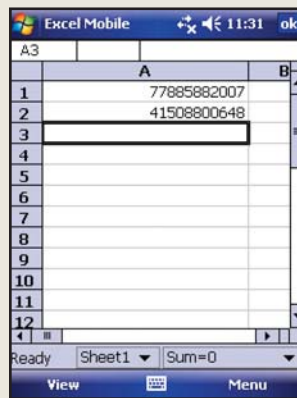
Fax: +1-510-933-3030

Online: [socketmobile.com/contact](http://socketmobile.com/contact)

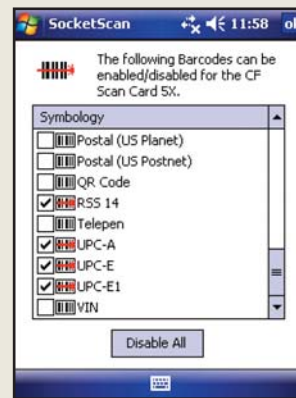
SPECIFICATIONS	
SKU #	Single unit IS5040-1150 20 pack IS5041-1151
Antimicrobial Rating (JIS Z2801:2000 Test)	2.49 on Methicillin-resistant Staphylococcus aureus (MRSA) 6.07 when cleaned with Sani-Cloth® Plus disposable cloth wipes
Scanner Type	CMOS high density 2D imager
Types of Barcodes Decoded	Linear (1D), Stacked linear, 2D/Matrix,Postal
Symbologies Decoded	Australia Post, Aztec, BPO4 State Code, British Post, Canada Post, Chinese 2 of 5, Codabar, Codablock, Code 11, Code 128, Code 39, Code 93, Composite Code, Data Matrix, Dutch Post, EAN/UCC Composite, GS1 DataBar (RSS), GS1-128 (UCC-128/ EAN-128), Interleaved 2 of 5, ISBN, Japan Post, Matrix 2 of 5, Maxicode, MSI, PDF 417/ Macro PDF 417/Micro PDF 417, Planet, Plessey Code, Postnet, QR Code, RSS/RSS-14/Expanded, Standard 2 of 5, Telepen, TLCode 39, UPC/EAN, 4 State Code
Decode Distance*	1.5 to 10.5 inches (3.8 to 27 cm)
Operating System Support	Windows Mobile 6 Classic/Professional Windows Mobile 2003, 2003SE, 5.0 for Pocket PC Windows Vista, XP
Interface Standard	CompactFlash Type II PC Card (PCMCIA), requires Type II PC Card adapter (sold separately)
Included Software	SocketScan for Windows Mobile SocketScan for Windows Vista / XP Socket Floating Trigger
Certification/ Compliance	FCC: Part 15, Class B C-TICK: s.182 RoHS CE: EN55024:2003 VCCI Class B
Warranty	CF Scan Card: One year Accessories: 90 days SocketCare enhanced service program available separately

\*Depends on symbol size, symbology, label media, W-N Ratio, scan angle

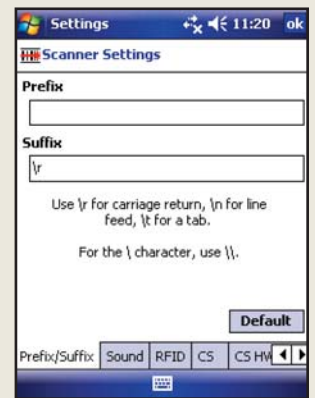
## SocketScan Software



SocketScan lets you scan data into any application



Tap to select symbology support



Enter an automatic prefix or suffix to further reduce manual data entry



© 2010, Socket Mobile, Inc. Socket, the Socket logo, Business Mobility Now!, CompactFlash Scan Card, SocketScan, and Battery Friendly are registered trademarks or trademarks of Socket Mobile, Inc. Microsoft is a registered trademark of Microsoft Corporation in the United States and other countries. All other brand and product names are trademarks of their respective holders. Information is subject to change. 6450-00192 E 1/2010

Business Mobility Now!™



[www.L-TronDirect.com](http://www.L-TronDirect.com)

800-830-9523

[info@L-Tron.com](mailto:info@L-Tron.com)

596 Fishers Station Dr | Victor, NY | 14564 | Suite 1 A

[www.L-Tron.com](http://www.L-Tron.com)

