

IN-COUNTER HIGH PERFORMANCE BAR CODE READER

The Magellan™ 3300HSi bar code reader brings Datalogic's new imaging technology to the high-volume point-of-sale. Along with the 3200VSi vertical reader, they are the first bar code scanners to duplicate the speed and wide field-of-view of high-performance omnidirectional laser scanners while adding the benefits associated with imaging. This imaging technology provides outstanding performance when capturing hard-to-read bar codes such as truncated (short), out-of-spec, poorly printed and GS1 DataBar™ codes, and provides support for both linear (1D) and 2D label decoding. The Magellan 3300HSi imager enables both sweep and presentation scanning techniques ensuring maximum productivity and ergonomic ease.

With the renowned quality and reliability famous in all Magellan products, the Magellan 3300HSi imager achieves new levels of product reliability by utilizing a solid-state design that does not require the use of laser modules or spinning motors, ensuring years of worry-free operation.

Unique features not found on any point-of-sale scanner, include a Micro-SD card reader to help with software management, upgrading, and maintenance. Managing software with the Magellan 3300HSi reader is very flexible and includes multiple methods to load new software or to modify existing configuration files and application firmware. Because most of the Magellan 3300HSi scanner features are software based, new capabilities are simple to add, even after the initial installation, increasing the useful life of the scanner and protecting your company's technology investment over time.

Other Magellan product features include Diagnostics Reporting, Host Download and Productivity Index Reporting™ allowing management to use data from the scanner to improve throughput and manage maintenance. A cell phone reading mode, activated with either a push of a button or a host terminal software command optimizes light levels to capture images or read bar codes from mobile phones or PDAs.

FEATURES

- Datalogic's high performance Imaging Technology
- Linear and 2D bar code reading
- Solid-state electronics
- Software driven – flexible and upgradeable
- Micro SD card slot
- Multiple interfaces in every unit
- Image capture
- RS-232 auxiliary port



DECODING CAPABILITY

1D / LINEAR CODES	Autodiscriminates all standard 1D codes including GS1 DataBar™ linear codes.
2D CODES	Aztec Code; Data Matrix (ECC200 Only); MaxiCode; QR Code;
STACKED CODES	GS1 DataBar Composites; GS1 DataBar Expanded Stacked; GS1 DataBar Stacked; GS1 DataBar Stacked Omnidirectional; MicroPDF417; PDF417

ELECTRICAL

AC POWER REQUIREMENTS	AC Input: 90-264 VAC, 47-63 Hz
POWER CONSUMPTION	Operating (Maximum): 9.9 Watts Operating (Nominal): 3.0 Watts Sleep Mode: 2.0 Watts

ENVIRONMENTAL

AMBIENT LIGHT	0 - 86,100 lux
ESD PROTECTION (AIR DISCHARGE)	25 kV
HUMIDITY (NON-CONDENSING)	5 - 95%
TEMPERATURE	Operating: 0 to 40 °C / 32 to 104 °F Storage/Transport: -40 to 70 °C / -40 to 158 °F

INTERFACES

INTERFACES	IBM 46xx; Keyboard Wedge; OEM (IBM) USB; RS-232; USB; USB COM
AUXILIARY PORTS	Powered RS-232

OPTIONAL FEATURES

EAS FEATURES	Checkpoint Systems: Integrated EAS hardware will work with Counterpoint IX and Evolve D11 models Sensormatic: Good Read Acknowledgement
VALUE ADDED FEATURES	Diagnostic Reporting; Host Download; Productivity Index Reporting™ (PIR)

PHYSICAL CHARACTERISTICS

DIMENSIONS	Depth (Below Counter): 8.7 cm / 3.4 in Length: 15.2 cm / 6.0 in Width: 15.2 cm / 6.0 in
WEIGHT:	0.79 kg / 1.75 lb

READING PERFORMANCE

IMAGE CAPTURE	Graphic Formats: BMP, JPEG; Greyscale: 256, 16, 2
IMAGER SENSOR	1280 x 1024
LIGHT SOURCE	Illumination: Multiple diffused 625 nm LEDs
PRINT CONTRAST RATIO (MINIMUM)	25%
READ HEIGHT	10.2 cm / 4.0 in
READ RATE (MAXIMUM)	39 Million pixels per second
READING INDICATORS	Beeper (Adjustable Tone and Volume); Good Read LED; Good Transmission
RESOLUTION (MAXIMUM)	5 mil

SAFETY & REGULATORY

AGENCY APPROVALS	The product meets necessary safety and regulatory approvals for its intended use. The Quick Reference Guide for this product can be referred to for a complete list of certifications.
ENVIRONMENTAL COMPLIANCE	Complies to China RoHS; Complies to EU RoHS
LED CLASSIFICATION	EN60825-1 Class 1 LED; IEC 60825 Class 1 LED; IEC 60825-1 Class 1 LED Product

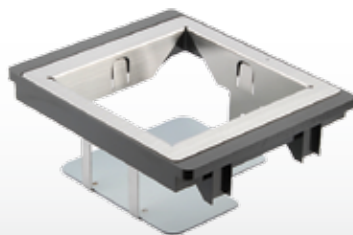
UTILITIES

MAGELLAN™ OSP	Magellan On-Screen Programming (OSP) configuration software is available for download at no charge.
OPOS / JAVAPOS	JavaPOS Utilities are available for download at no charge. OPOS Utilities are available for download at no charge.

WARRANTY

WARRANTY	3-Year Factory Warranty
----------	-------------------------

ACCESSORIES



Mounts/Stands

- 11-0027 Standard Counter Mount
- 11-0178 Standard Counter Mount with Magellan HS1250 Fill Kit



www.L-TronDirect.com

800-830-9523

info@L-Tron.com

596 Fishers Station Dr | Victor, NY | 14564 | Suite 1 A

www.L-Tron.com

Get in touch with us
on social media!

