

# Zebra Kiosk Print Station



## Looking for a Low-Cost Self-Service Kiosk Solution?

You found it! An innovative, off-the-shelf, all-in-one kiosk solution, the Zebra Kiosk Print Station makes it easy and affordable to bring the benefits of self-service—like improved sales, greater customer satisfaction and reduced costs—to your business. The Zebra Kiosk Print Station accessory accommodates a Zebra® kiosk printer, a roll of Zebra media and a compact kiosk computer to form a complete, economical alternative to expensive custom kiosks. Simply add software to complete the solution.

- Quick and Easy to Integrate—Integrates all the kiosk hardware components into an easy-to-install device that simply mounts to a wall or pole.
- Easy to Afford—Its low cost results in rapid ROI, so even smaller businesses can reap the benefits of self-service kiosks.
- Flexible Media Options—The Zebra Kiosk Print Station supports up to 6" media roll, and widths of 2.3"/58 mm to 3.25"/82.5 mm.
- Durable and Secure—Sturdy, metal, lockable enclosure securely holds the printer and media, and a kiosk computer securely fastens to the unit—protecting all components from tampering and tough retail environments.
- Easy to Service—Enclosure opens completely to provide easy access for quick media changes and service.

Now it's convenient and affordable for any size business application to implement a self-service kiosk solution.

- An innovative, off-the-shelf and ready-to-ship kiosk solution
- Installs anywhere, pole- or wall-mountable
- So affordable, it's perfect for retail businesses of any size
- Accommodates a reliable Zebra TTP 2000™ or KR403™ kiosk printer



# Specifications at a Glance\*

## Zebra Kiosk Print Station



### Standard Features

- All-in-one cost-effective solution for self-serve applications
- Innovative design integrates kiosk hardware components
- Locking enclosure secures printer and media
- Ultra-compact design and pole or wall mount saves floor space
- Robust, heavy-duty metal frame with sturdy plastic enclosure
- Supports 6" media roll in various widths

### Peripherals and Accessories

Kiosk computers with VESA 75/100 Standard mounting

#### Supported printers

- Zebra TTP 2010™ serial kiosk receipt printer
- Zebra TTP 2030™ USB kiosk receipt printer
- Zebra KR403™ USB and serial receipt printer

#### Supported print features

- Zebra patented looping presenter feature
- Paper low sensor (optional)

#### Accessories

- Printer power supply
- AC power cord
- USB or serial communication cable
- Paper guide: 2.3"/58 mm, 2.4"/60 mm, 3.15"/80 mm, 3.25"/82.5 mm

### Media Options

#### Supported media

- Widths: 2.3"/58 mm, 2.4"/60 mm, 3.15"/80 mm, 3.25"/82.5 mm
- Up to 6" media roll
- 1" media core
- 8000D 2.3"/58 mm receipt media
- 8000D 3.15"/80 mm receipt media

### Mounting Options

- Zebra Kiosk Print Station: pole or wall-mount
- Third-party kiosk computer: Conforms to the VESA 75/100 mm Standard

### Environmental

- European RoHS compliant
- For indoor use only

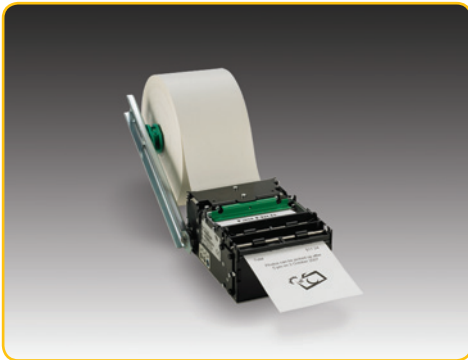
### Physical Characteristics

- Width: 18.2"/462 mm
- Height: 16.2"/411 mm
- Depth: 8.5"/216 mm
- Weight: 13.4 lbs/6.1 kg
- Weight with printer, 6" roll of media, printer power supply (excludes computer and computer power supply): 20.4 lbs/9.3 kg

### Warranty

One year limited

## Zebra Kiosk Printer



### Standard Features

- Direct-thermal receipt printing
- Looping presenter with pull detector
- Full-width or partial guillotine
- Auto media loading
- USB or serial connectivity
- Windows® drivers for plug-and-play and direct addressing with ESC commands

### Printer Models

TTP 2010 (serial), TTP 2030 (USB), KR403™ Serial and USB

### Printer Specifications

#### Resolution

8 dots per mm (203 dpi)

#### Maximum print area

- Width: 2.8"/72 mm
- Length: 2.76"/70 mm to 23.6"/600 mm

#### Maximum print speed:

6"/150 mm per second

### Media Specifications

- Paper widths: 2.28"/58 mm, 2.36"/60 mm, 3.15"/80 mm and 3.25"/82.5 mm
- Maximum diameter of media roll: 6"/152 mm
- Minimum diameter of media core: 1"/25 mm
- Media thickness: 0.002"/0.054 mm to 0.004"/0.11 mm
- Media types: Roll paper

### Operating Characteristics

#### Environmental

- Operating temp: 14° F/-10° C to 122° F/50° C
- Storage temp: 14° F/-10° C to 122° F/50° C
- Operating humidity: 10% to 95% RH non-condensing
- Storage humidity: 10% to 95% RH non-condensing excluding paper

#### Physical characteristics

- Width: 4.1"/105 mm
- Height: 2.6"/65 mm
- Depth: 5.7"/145 mm
- Weight: 2.4 lbs/1.1 kg

#### Electrical

24VDC +/-5%, average of 2A when printing (85mA idle)

### Warranty

One year limited

*Note: Printer, accessories and media sold separately from the Kiosk Print Station.*

\*Specifications subject to change without notice.

©2010 ZIH Corp. All product names and numbers are Zebra trademarks, and Zebra and the Zebra head graphic are registered trademarks of ZIH Corp. All rights reserved. Windows is either a registered trademark or trademark of Microsoft Corporation. All other trademarks are the property of their respective owners.



www.zebra.com

#### Corporate Headquarters

+1 800 423 0442

E-mail: inquiry4@zebra.com

#### Asia-Pacific Headquarters

+65 6858 0722

E-mail: apacchannelmarketing@zebra.com

#### EMEA Headquarters

+44 (0)1628 556000

E-mail: mseurope@zebra.com

#### Latin America Headquarters

+1 847 955 2283

E-mail: inquiry4@zebra.com

#### Locations

**USA:** California, Georgia, Illinois, Rhode Island, Texas, Wisconsin **Europe:** France, Germany, Italy, Netherlands, Poland, Spain, Sweden, United Kingdom  
**Asia Pacific:** Australia, China, India, Japan, Singapore, South Korea **Latin America:** Argentina, Brazil, Florida (USA), Mexico **Africa/Middle East:** Russia, South Africa, United Arab Emirates

GSA#: GS-35F-0268N  
P1011385 Rev. 2 (3/10)



[www.L-TronDirect.com](http://www.L-TronDirect.com)

800-830-9523

[info@L-Tron.com](mailto:info@L-Tron.com)

596 Fishers Station Dr | Victor, NY | 14564 | Suite 1 A

[www.L-Tron.com](http://www.L-Tron.com)

Get in touch with us  
on social media!

