

OMNI™

OMNI

Heavy Duty Slot Reader for Bar Codes and/or MagStripe

Reads MagStripes & Bar Codes

The Omni reads up to 3 tracks of information with a single swipe in either direction. In combination, the same Omni unit can read both bar code and MagStripe media. It scans bar codes printed on paper, card stock, or plastic. An infrared option is available for security-based applications, where bar codes are over-printed to prevent duplication. The data outputs are TTL, RS232, keyboard wedge, USB/KB, USB/RS232, and Wiegand interfaces.

Edits and Formats Data

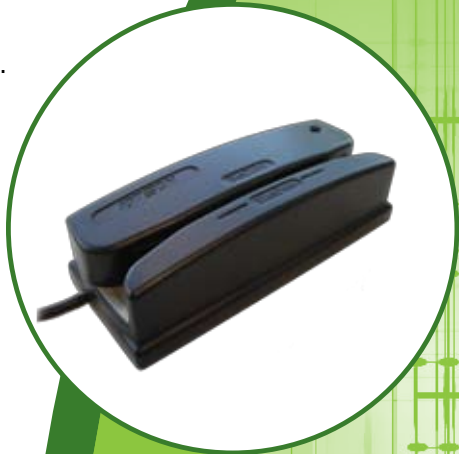
The Omni's output can be formatted with terminating characters, special preamble and/or postamble character strings, and special parsing to match the data format expected by the terminal. These settings are programmed into the reader and stored in non-volatile memory.

Stands Up to Heavy Use

The Omni reader is designed for demanding applications, such as for access control or in self-service kiosks. Its die-cast metal base, stainless steel wearplate, and impact-resistant housing make it ideal for stand-alone, high-volume applications. Its metal base can be securely mounted with screws, and cable exits are available at the side, end, or bottom of the unit. Weatherproof, sealed, or extended temperature versions are available for use in harsh environments.

Features and Benefits

- TTL, KB, RS232, USB/KB, USB/RS232 and Wiegand interfaces
- Reads most bar codes symbologies and/or MagStripe Data
- Superior reading of jitter, scratched, and worn MagStripe cards
- Dual sided MagStripe head versions available
- Die-cast metal plate allows flexible mounting options
- Rugged weatherproof design with sealed or extended temperature options
- Reliable for a minimum of 1,000,000 passes
- Signifies successful reads with a beeper and LED indicator
- Data output can be programmed into needed format
- Read up to 3 tracks of information
- Threaded inserts for easy and flexible mounting



Omni Specifications WCR 32X7

Electrical

Power Requirements: Bar Code:+5 VDC +/-10%, 35mA Max.
 Magnetic Stripe:+5 VDC +/-10%, 30mA Max.
 Hybrid:+5 VDC +/-10%, 65mA Max. combined magstripe and bar code

Interfaces: TTL (TTL barcode and/or magnetics clock and data), keyboard wedge,
 Standard SIA 26-bit Wiegand, RS-232,USB/KB, USB/RS-232

Environmental

Operating Temperature: 32°F to 131°F (0°C to 55°C)
 Storage Temperature: -31°F to 158°F (-35°C to 70°C)
 Humidity: Maximum 95% non-condensing, dry storage
 Extended Temperature: -31°F to 140°F (-35°C to 60°C), without ice on magnetic head*
 Weatherproof Temperature: -31°F to 140°F (-35°C to 60°C), MagStripe only*
 Water Resistant: IP-53 Rating for sealed barcode reader version only
 * Minimum quantities apply; extended temperature option not available with bar code feature.

Reliability

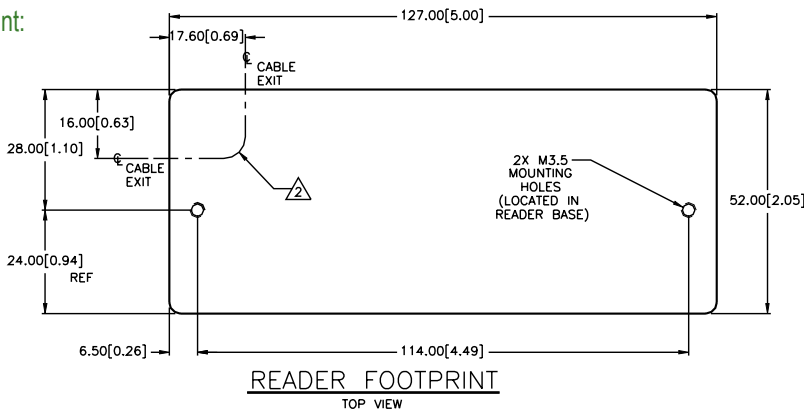
Operating Life: 1,000,000 cycles minimum
 Warranty: One year, parts and labor

Mechanical

Media Thickness: Bar Code:0.005 inches (0.127mm) to 0.050 inches (1.27mm)
 Magnetic Stripe:0.015 inches (0.381mm) to 0.050 inches (1.27mm)
 Media Formats: Bar Code: UPC-A, UPC-E, EAN-8, EAN-13, Code 39, Telepen, In
 terleaved 2 of 5, Industrial 2 of 5, Code 128, MSI/Plessey, Codabar
 Magnetic Stripe: ISO 7811, AAMVA, and other F2F formats
 Slot Width: 0.055 (1.37mm)
 Swipe Speed: Bar Code:5 to 65 inches per second, bi-directional**
 Magnetic Stripe:3 to 60 inches per second, bi-directional
 ** Media velocity can vary depending on bar code density and quality

Dimensions(L) x(W) x (H): 5 inches (127mm) x 2.05 inches (52mm) x 1.38 inches (35mm)
 Weight: 1.4 lb. (including power pack)
 Cable Length: 6-foot straight cable
 Cable Connector: TTL- 9 pin squeeze, Keyboard - 6 pin mini DIN, RS-232 - DE9F,
 TTL Mag/Bar Code Combo Readers-stripped and tinned leads
 Bar Code Source Light: Visible red 660nm or Infrared 930nm
 Bar Code PCS: 60% minimum
 Bar Code Centerline length: 0.49 inches (12.50mm) from bottom of slot
 to reading window center
 Bar Code Resolution Distance: 0.006 inches minimum

Footprint:



IDTECH[®]
 Value through Innovation

Corporate Headquarters:

10721 Walker Street Cypress, California 90630
 www.idtechproducts.com
 (714) 761-6368 sales@idtechproducts.com

**International Sales Office
 for Canada & South America:**

+450 465 5261 (Canada) robertop@idtechproducts.com

European Sales Offices:

+33 5 65 50 28 59 (France)
 +49(0) 8851 6159900 (Germany)
 emea@idtechproducts.com

ISO 9001 : 2000 Certified





www.L-TronDirect.com

800-830-9523

info@L-Tron.com

596 Fishers Station Dr | Victor, NY | 14564 | Suite 1 A

www.L-Tron.com

Get in touch with us
on social media!

