

High Performance Industrial Thermal Solutions



M84Pro Series Printers

The *Pro* Series high-performance industrial printers are ideal for a range of applications, including:

-  **PCB Labeling**
-  **Component Marking**
-  **Ticketing**
-  **Retail Labeling**
-  **Compliance Labeling**
-  **Shipping/Receiving**
-  **Asset Tracking**
-  **WMS**

Heavy Duty Metal Construction

The *Pro* Series' rugged all-metal design makes these printers ideal for heavy-duty use in the harshest environments. The metal enclosure provides full protection of the print mechanism and media in any mission-critical application.

High Speed and Performance

The M84*Pro* uses the latest technology to provide maximum performance and eliminate wait time. The powerful RISC CPU delivers print speed of up to 10 inches (25.4 cm) per second, enabling you to generate the most complex label formats quickly and efficiently.

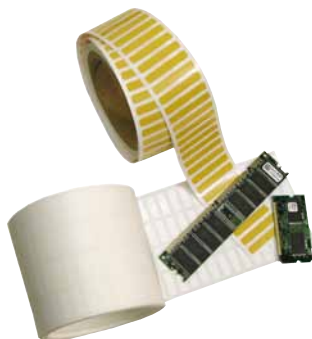
User Configurable Print Resolution

The *Pro* Series printers offer superior print quality at 203, 305, and 609 dpi. By simply changing the print head, you can quickly convert the M84*Pro* into any of three available print resolutions.



Performs best with
Techno
T H E R M
Labels & Ribbons

SPECIFICATIONS



	M84Pro(2)	M84Pro(3)	M84Pro(6)
Printing Method	Thermal Transfer/Direct Thermal		
Print Resolution	203 dpi (8 dpmm)	305 dpi (12 dpmm)	609 dpi (24 dpmm)
Print Speed	10 ips (254 mm/s)	8 ips (200 mm/s)	6 ips (150 mm/s)
Media Width	Max. 5" (128 mm) / Min. 0.87" (22 mm)		
Max. Print Width	4.1" (104 mm)		
Min. Print Length	0.24" (6 mm) - continuous / 0.63" (16 mm) - tear off / 1.18" (30 mm) - cutter/dispenser		
Max. Print Length	49.2" (1249 mm)	32.8" (833 mm)	14" (356 mm)
Max. Ribbon Size	4.4" (111 mm) W x 1475' (450 m) L - Face-In		
Dimensions	10.4" (265 mm) W x 17.1" (435 mm) D x 13.4" (341 mm) H		
Weight	39.7 lbs (18 kg)		

Memory:

- 16 MB Standard RAM
- 2 MB Standard Flash
- 4 MB Flash - Optional
- 1 MB or 256k PCMCIA - Optional

Processor:

32-BIT RISC

Media:

Roll-fed or fan-fold, die-cut or continuous direct thermal (thermal transfer) labels, synthetics, and tag stock with or without black mark, gap, or notch.

Max. Caliper: 0.01" (0.25 mm)
 Max. Roll Diameter: 8.6" (218 mm)
 Wind: Face-In

Sensing:

- Adjustable transmissive sensor for gap
- Reflective sensor for black mark
- Automatic, programmable top of form
- Label present sensor (opt. w/dispenser)
- Ribbon-out sensor

Plug-In Interface Modules:

- Serial - RS232 (up to 57.6k bps)
- Parallel - IEEE1284 (ECP)
- Ethernet - 10/100BaseT
- Wireless 802.11g
- Twinax/Coax
- RS422/485
- USB (Factory Installed)

Barcode Symbolologies:

Linear: UPC-A, UPC-E, EAN-8, EAN-13, Code 39, Code 93, Code 128, Codabar, MSI, Bookland, Industrial 2/5, Interleaved 2/5, Matrix 2/5, Postnet™, GS1-128, GS1-DataBar™

2-Dimensional: PDF417, Micro PDF417, Truncated PDF417, Maxicode™, Data Matrix, QR Code, Composite Symbology

Fonts:

- Bitmap - 12 proportional, mono-spaced and outline fonts (Code table 858)
- Scalable Internal CG Triumvirate® and CG Times® fonts
- Optional Downloaded TrueType® fonts, scalable from 8 to 72 points

Barcode and Font Formatting:

- 360° rotation of barcodes and text
- Horizontal and vertical character expansion
- Sequential numbering
- Form overlay for high-speed editing of complex formats

Graphic Support:

Printing and storage of *.PCX, *.BMP format, SATO Hex/binary

Software:

- Windows® Drivers (Windows® 2000, XP, 2003, Vista and Windows 7)
- Label Software (*Label Gallery Free*)
- Printer Utilities

Electrical Requirements:

115V/220V (± 10%), 50/60 Hz (± 1%)
(Jumper switch required)

Agency Certifications:

CE, UL, CSA, TÜV

Environmental Requirements:

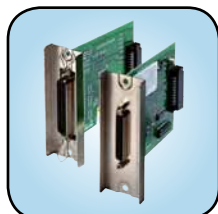
Operating: 41° to 104°F (5° to 40°C)
 15-85% RH, non-condensing
 Storage: 23° to 140°F (-5° to 60°C)
 Max. 90% RH, non-condensing
 EDS: 8kV

Optional Features:

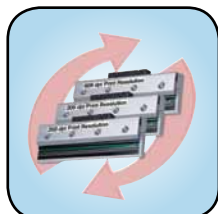
- Label Cutter
- Label Rewinder
- Real Time Clock
- Label Gallery
- Label Dispenser
- Memory Expansion
- Plug-In Interface



Memory Expansion



Plug-In Interface Modules



Printheads



Rewinder

SATO America, Inc.

10350-A Nations Ford Road, Charlotte, NC 28273
 Phone: (704) 644-1650 Fax: (704) 644-1662
 E-mail: satosales@satoamerica.com

©2011 SATO America, Inc. All rights Reserved. Rev B • Specifications subject to change without notice • Any unauthorized reproduction of the contents of this content, in part or whole, is strictly prohibited • SATO is a registered trademark of SATO Corporation and its subsidiaries in Japan, the U.S. and other countries. All other trademarks are the property of their respective owners.



www.L-TronDirect.com

800-830-9523

info@L-Tron.com

596 Fishers Station Dr | Victor, NY | 14564 | Suite 1 A

www.L-Tron.com

Get in touch with us
on social media!

